



Cypress Land Services Inc.

Telephone: 604.620.0877

Suite 1051 – 409 Granville Street

Facsimile: 604.620.0876

Vancouver, BC V6C 1T2

Website : [www.cypresslandservices.com](http://www.cypresslandservices.com)

January 23<sup>rd</sup>, 2023

VIA: [shaun.odea@rdco.com](mailto:shaun.odea@rdco.com)

Regional District of Central Okanagan  
Community Services  
1450 KLO Road  
Kelowna, BC, Canada V1W 3Z4

Dear Shaun O'Dea,

**Subject: Request for Concurrence for a Rogers Telecommunications Tower**  
**Address: 2411 Westside Place, Kelowna BC**  
**PID: 011-284-346**  
**Coordinates: 50.000628°N 119.496622° W**  
**Rogers Site: W4847 – McKinley West**

Please be advised that following Innovation, Science and Economic Development Canada (ISEDs) consultation process commonly referred to as the CPC, Rogers has completed the public consultation process and is respectfully requesting concurrence for the proposal to build a 15.9 metre monopole tower and equipment installation. Enclosed please find evidence of the following efforts regarding this public notification process:

- On October 6<sup>th</sup>, 2022, an Information Package was submitted to the RDCO formalizing the initiation of the consultation process for the proposed tower location. Please see **Appendix 1: Information Package**. During consultation, RDCO staff identified Development Permit Areas over the property for sensitive ecosystems. Once concurrence has been received, Rogers can engage any necessary QEP's to assess the area.
- On October 20<sup>th</sup>, 2022, as required by ISED's policy, eight (8) Notification Packages were mailed to property owners, occupants, and others within three (3) times the tower height (48m) of the proposed location. Please see **Appendix 2: Affidavit of Notification**. On November 24<sup>th</sup>, 2022, the 30-day consultation period concluded. During the consultation period, no written comments were received regarding the proposed tower.
- On January 10<sup>th</sup>, 2023, twenty (20) Notification Packages were mailed to property owners, occupants, and others within a 200m radius of the proposed tower at the request of RDCO staff. Please see **Appendix 3: Extended Notification**. On January 26<sup>th</sup>, the extended consultation period concludes. No written comments have been received.
- Once concurrence is received, Rogers will submit a permit to the Provincial Crown to allow for the proposed road to be built out over provincial land to access the tower for construction.

If Council concurs with the proposed tower project, please find in **Appendix 4: Resolution Example**, a sample resolution which may be used.

Rogers is committed to working with the community to find an acceptable location and infrastructure design. Should you require any additional information, please do not hesitate to contact me at 604.259.8809 or by e-mail at [kristina@cypresslandservices.com](mailto:kristina@cypresslandservices.com).

Kristina Bell  
Land Use Planner

*Kristina Bell*

Cypress Land Services  
Agents for Rogers

cc: Claudia Castro, Rogers Communications

## **Appendix 1: Information Package**



Cypress Land Services Inc.

Suite 1051 – 409 Granville Street

Vancouver, BC V6C 1T2

Telephone: 604.259.8809

Facsimile: 604.620.0876

Website : [www.cypresslandservices.com](http://www.cypresslandservices.com)

October 6<sup>th</sup>, 2022

Via Email: [planning@rdco.com](mailto:planning@rdco.com)

Todd Cashin  
Director of Community Services  
Regional District of Central Okanagan

Dear Todd Cashin,

<b>Subject:</b>	<b>ROGERS Telecommunications Facility Proposal Information Package</b>
<b>Location:</b>	<b>2411 Westside Road</b>
<b>PID:</b>	<b>010-284-346</b>
<b>Coordinates:</b>	<b>50.000628°N 119.496622° W</b>
<b>ROGERS Site:</b>	<b>W4847 – McKinley West</b>

---

## Overview

Cypress Land Services Inc., in our capacity as agents to Rogers Communications Inc. (Rogers), is submitting this information package (Information Package) to initiate the consultation process related to the installation and operation of a telecommunications facility within the Regional District of Central Okanagan (RDCO). The new facility will improve wireless services across the lake to resorts and residential within 1km of the shoreline at the east side of the lake. This Information Package is intended to formalize the consultation process.

## Proposed Site

The proposed site is location is identified as **PID: 010-284-346**, located on the west side of Okanagan Lake on Westside Road (**Schedule A: Tower Site Location**). The property is currently privately owned. Rogers has entered into a lease agreement with the property owner.

## Rationale for Site Selection

Rogers seeks to maintain and improve high quality, dependable network services to Canadians. In order to improve network performance, Rogers is seeking to add the proposed communications tower. The installation will service the wireless needs of communities on both the west and east sides of the lake.

The proposed site is a result of many considerations. Existing structures, including towers and rooftops, were initially reviewed during the site selection process. After careful examination, it has been determined that there are no viable existing structures in the area that would be suitable for the operations of Rogers' network equipment. The TELUS tower on site is too short to accommodate Rogers' equipment to provide improved service coverage. Please see **Schedule B: Map of Existing Towers**.

### **Tower Proposal Details**

Rogers is proposing to install a 15.9m monopole tower inclusive of a 1m lightning rod, with 8 initial antennas, one microwave and an equipment shelter at the base, enclosed by a chain-link fence compound area occupying an area of 8m by 6m. Rogers has completed preliminary design plans in **Schedule C: Preliminary Plans** and a **Photo-simulation, Schedule D**. The tower may have adequate space for third party equipment.

### **Consultation Process**

Innovation, Science, and Economic Development Canada (ISED), formerly Industry Canada, requires all proponents to consult with the local land use authority and public, notwithstanding that ISED has exclusive jurisdiction in the licensing of telecommunication sites, such as the proposed tower. The RDCO does not have its own telecommunications policy. Following ISED's requirements, Rogers would like to initiate ISED's Default Public Consultation Process (as described in the CPC-2-0-0-03 – Radiocommunication and Broadcasting Antenna Systems, commonly referred to as the "CPC").

Information on the "CPC" consultation process developed by ISED may be found online at:

[CPC-2-0-03 — Radiocommunication and Broadcasting Antenna Systems - Spectrum management and telecommunications](#)

In order to obtain comments, concerns or questions in regards to the proposed tower site, the CPC requires Rogers to send out notification packages to all properties located within three times the height of the proposed tower. A notice in the local paper is not required for this proposal under the CPC because the proposed tower height is under 30m. This comment period is minimum of 30 days. We expect the notification package to be sent by October 13<sup>th</sup>, 2022.

At the conclusion of the consultation process, Rogers will prepare a summary of comments received from the community as well as the replies provided by Rogers. Rogers is requesting that, subsequent to the completed consultation process and report to Council, a letter or resolution of concurrence is issued by the RDCO.

## Health and Safety

Health Canada's Safety Code 6 regulations are applicable to this, and all, telecommunications sites. Safety Code 6 seeks to limit the public's exposure to radiofrequency electromagnetic fields and ensures public safety. Additional information on health and safety may be found on-line at: Health Canada:

[http://www.hc-sc.gc.ca/ewh-semt/pubs/radiation/radio\\_guide-lignes\\_direct-eng.php](http://www.hc-sc.gc.ca/ewh-semt/pubs/radiation/radio_guide-lignes_direct-eng.php)

## Concurrence Requirements

In order to complete the consultation process, Rogers will be requesting concurrence from the Regional District in a form acceptable by ISED.

## Conclusion

Please consider this Information Package as the official commencement of the consultation process for this site. Rogers is committed to working with the Regional District and the community throughout the consultation process.

We look forward to working together during this process. Please do not hesitate to contact us by phone at 604.259.8809 or by email at [kristina@cypresslandservices.com](mailto:kristina@cypresslandservices.com).

Thank you in advance for your assistance and consideration.

Sincerely,

### **CYPRESS LAND SERVICES**

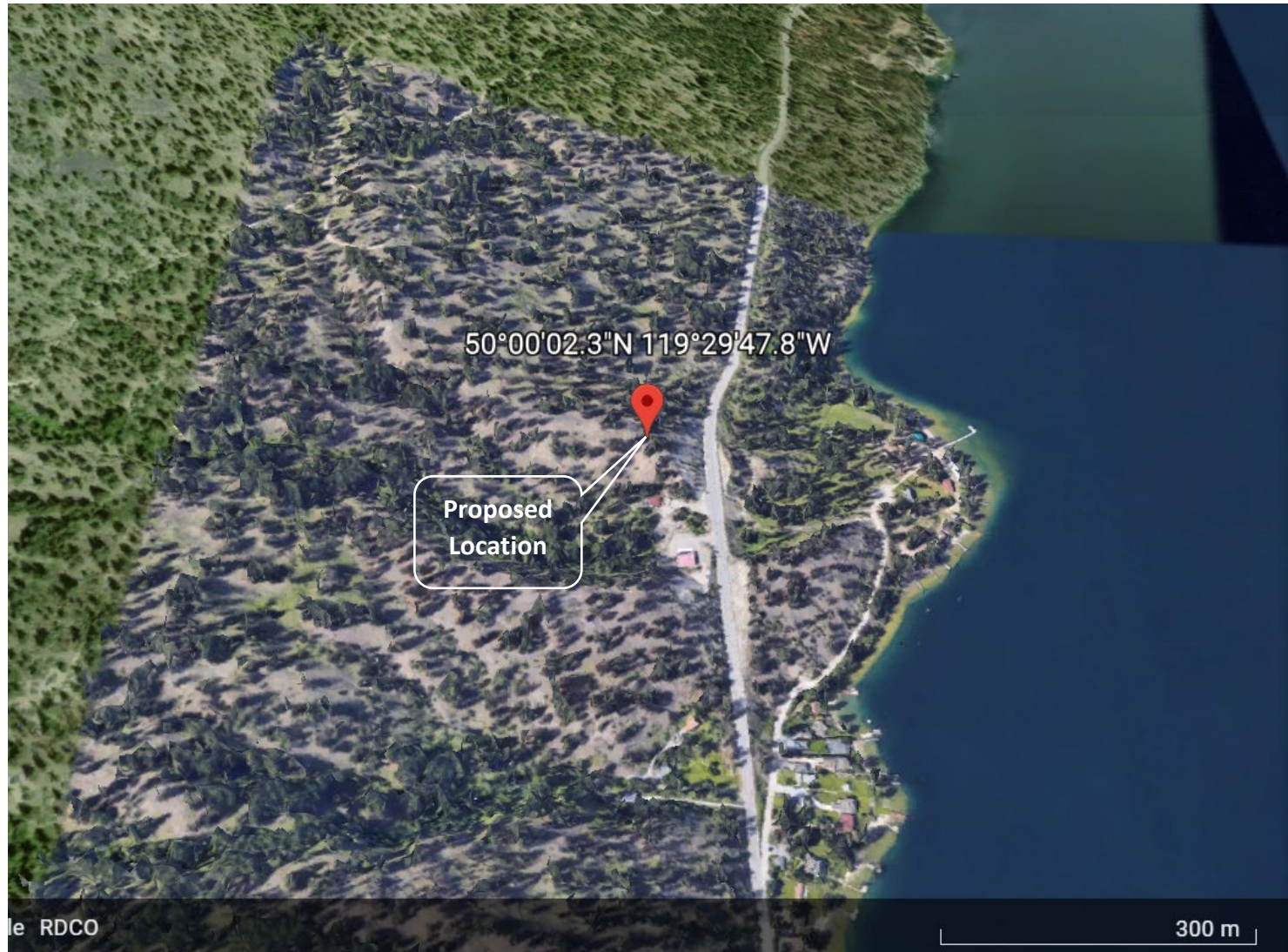
Agents for ROGERS



Kristina Bell  
Land-use Planner

cc: Claudia Castro

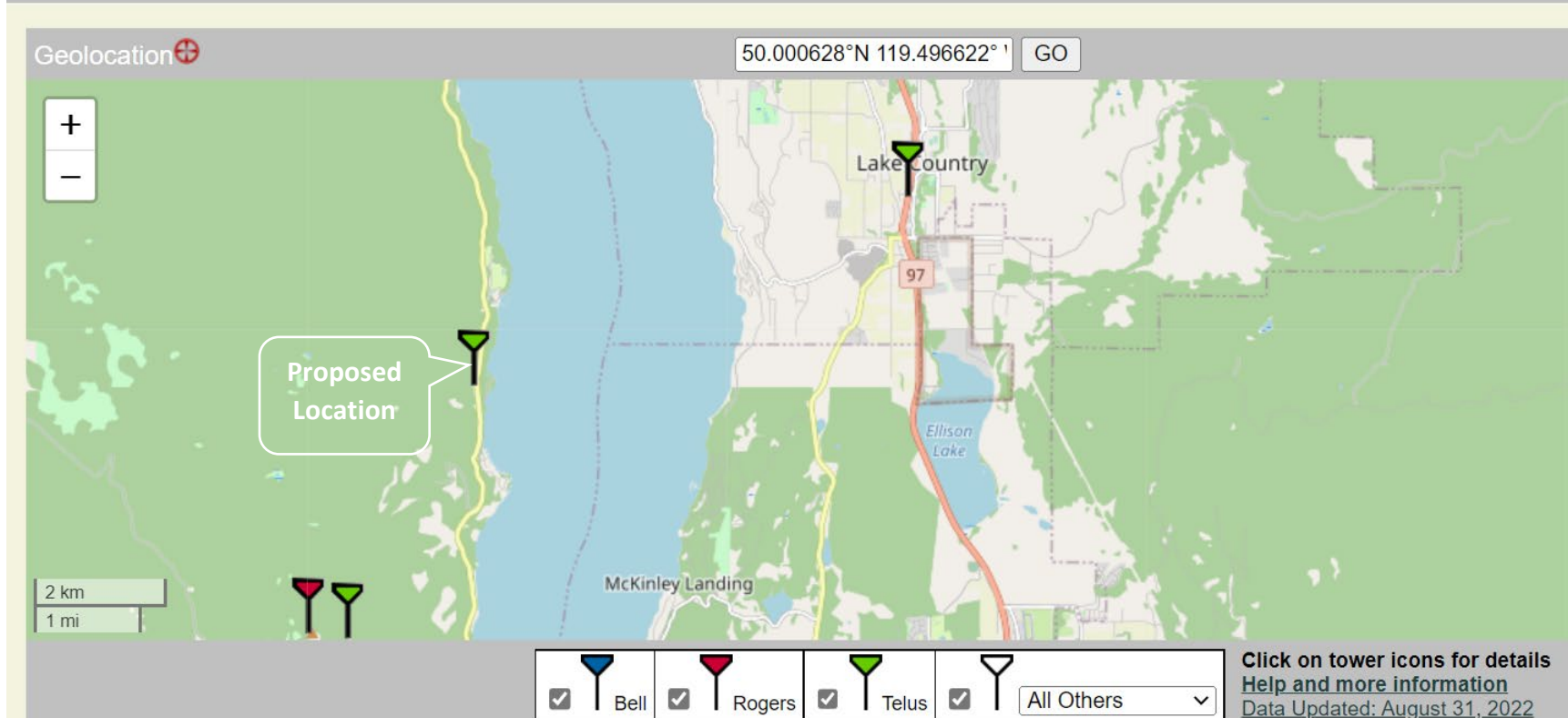
**SCHEDULE A  
ROGERS TOWER LOCATION**





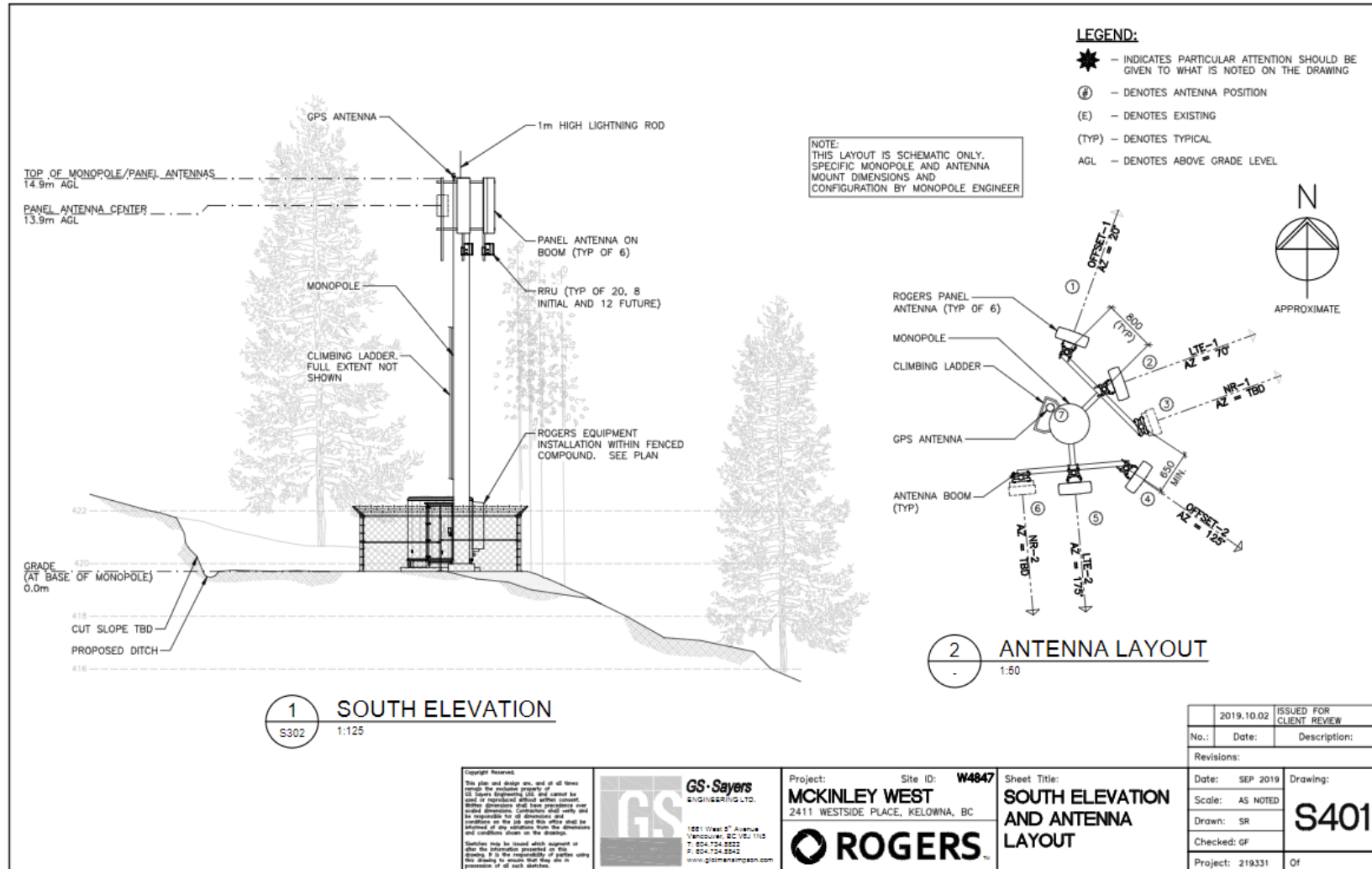
**SCHEDULE B  
MAP OF EXISTING SITES**

## Canadian Cellular Towers Map

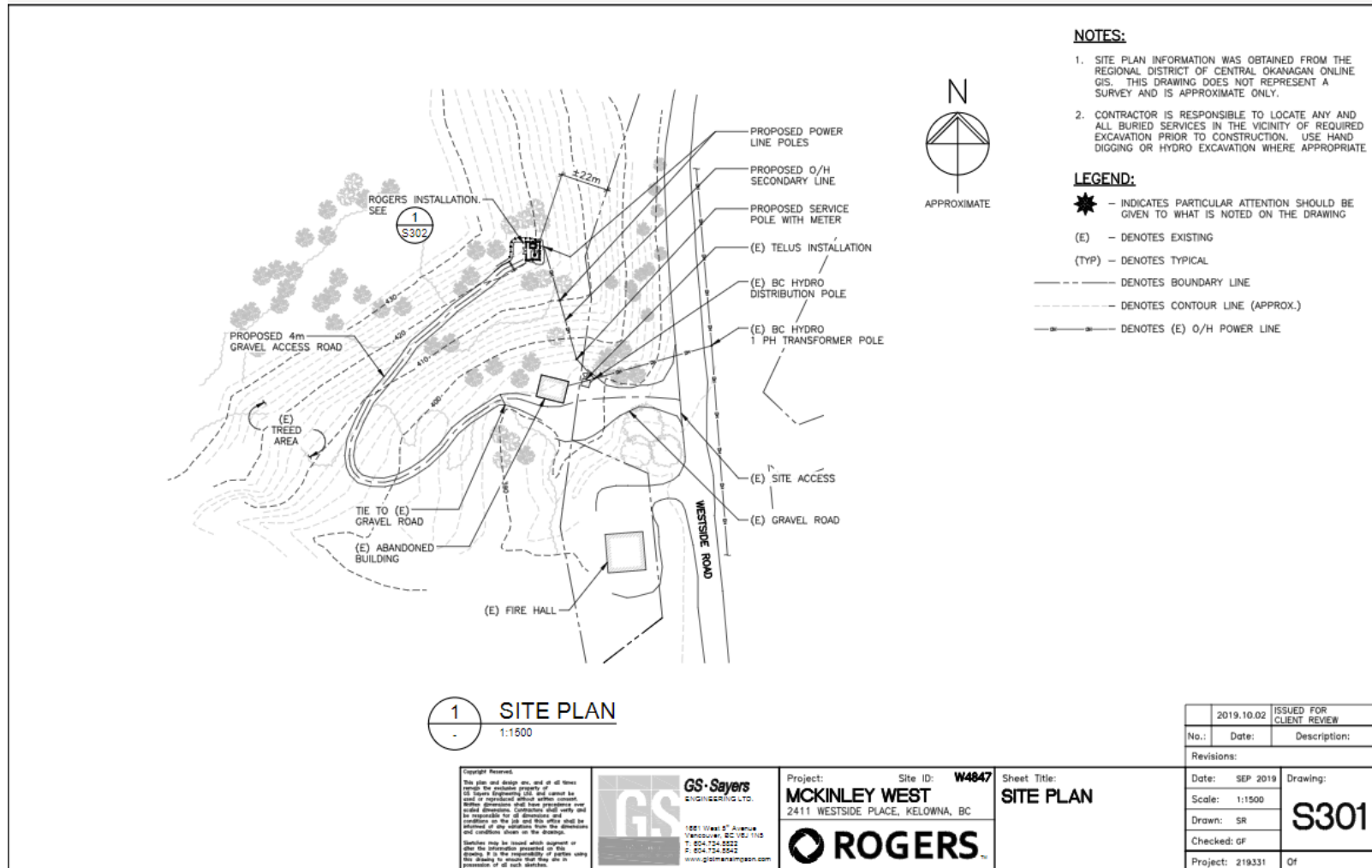




## SCHEDULE C PRELIMINARY DESIGN PLANS – TOWER PROFILE



## SCHEDULE C PRELIMINARY DESIGN PLANS – SITE PLAN



**LEGEND:**

- ★ - INDICATES PARTICULAR ATTENTION SHOULD BE GIVEN TO WHAT IS NOTED ON THE DRAWING
- (E) - DENOTES EXISTING
- (TYP) - DENOTES TYPICAL
- WIC - DENOTES 2448x1830x2648mm ALPHA WALK-IN-CABINET ON CONCRETE PAD.
- (A) - DENOTES LIGHT FIXTURE WITH MOTION SENSOR PROVIDED WITH WIC
- (B) - DENOTES STEEL STEP PROVIDED WITH WIC
- (C) - DENOTES HVAC UNIT PROVIDED WITH WIC
- (D) - DENOTES METER BASE PROVIDED WITH WIC TO BE REPLACED WITH PULLBOX
- (E) - DENOTES GENERATOR CONNECTION BOX PROVIDED WITH WIC
- - DENOTES CONTOUR LINE (APPROX.)
- - DENOTES PROPOSED DRAINAGE DITCH
- - DENOTES PROPOSED CULVERT

**1 S301**

**COMPOUND LAYOUT**

**1 S401**

**1 S402**

**1 S403**

**1 S404**

**1 S405**

**1 S406**

**1 S407**

**1 S408**

**1 S409**

**1 S410**

**1 S411**

**1 S412**

**1 S413**

**1 S414**

**1 S415**

**1 S416**

**1 S417**

**1 S418**

**1 S419**

**1 S420**

**1 S421**

**1 S422**

**1 S423**

**1 S424**

**1 S425**

**1 S426**

**1 S427**

**1 S428**

**1 S429**

**1 S430**

**1 S431**

**1 S432**

**1 S433**

**1 S434**

**1 S435**

**1 S436**

**1 S437**

**1 S438**

**1 S439**

**1 S440**

**1 S441**

**1 S442**

**1 S443**

**1 S444**

**1 S445**

**1 S446**

**1 S447**

**1 S448**

**1 S449**

**1 S450**

**1 S451**

**1 S452**

**1 S453**

**1 S454**

**1 S455**

**1 S456**

**1 S457**

**1 S458**

**1 S459**

**1 S460**

**1 S461**

**1 S462**

**1 S463**

**1 S464**

**1 S465**

**1 S466**

**1 S467**

**1 S468**

**1 S469**

**1 S470**

**1 S471**

**1 S472**

**1 S473**

**1 S474**

**1 S475**

**1 S476**

**1 S477**

**1 S478**

**1 S479**

**1 S480**

**1 S481**

**1 S482**

**1 S483**

**1 S484**

**1 S485**

**1 S486**

**1 S487**

**1 S488**

**1 S489**

**1 S490**

**1 S491**

**1 S492**

**1 S493**

**1 S494**

**1 S495**

**1 S496**

**1 S497**

**1 S498**

**1 S499**

**1 S500**

**1 S501**

**1 S502**

**1 S503**

**1 S504**

**1 S505**

**1 S506**

**1 S507**

**1 S508**

**1 S509**

**1 S510**

**1 S511**

**1 S512**

**1 S513**

**1 S514**

**1 S515**

**1 S516**

**1 S517**

**1 S518**

**1 S519**

**1 S520**

**1 S521**

**1 S522**

**1 S523**

**1 S524**

**1 S525**

**1 S526**

**1 S527**

**1 S528**

**1 S529**

**1 S530**

**1 S531**

**1 S532**

**1 S533**

**1 S534**

**1 S535**

**1 S536**

**1 S537**

**1 S538**

**1 S539**

**1 S540**

**1 S541**

**1 S542**

**1 S543**

**1 S544**

**1 S545**

**1 S546**

**1 S547**

**1 S548**

**1 S549**

**1 S550**

**1 S551**

**1 S552**

**1 S553**

**1 S554**

**1 S555**

**1 S556**

**1 S557**

**1 S558**

**1 S559**

**1 S560**

**1 S561**

**1 S562**

**1 S563**

**1 S564**

**1 S565**

**1 S566**

**1 S567**

**1 S568**

**1 S569**

**1 S570**

**1 S571**

**1 S572**

**1 S573**

**1 S574**

**1 S575**

**1 S576**

**1 S577**

**1 S578**

**1 S579**

**1 S580**

**1 S581**

**1 S582**

**1 S583**

**1 S584**

**1 S585**

**1 S586**

**1 S587**

**1 S588**

**1 S589**

**1 S590**

**1 S591**

**1 S592**

**1 S593**

**1 S594**

**1 S595**

**1 S596**

**1 S597**

**1 S598**

**1 S599**

**1 S600**

**1 S601**

**1 S602**

**1 S603**

**1 S604**

**1 S605**

**1 S606**

**1 S607**

**1 S608**

**1 S609**

**1 S610**

**1 S611**

**1 S612**

**1 S613**

**1 S614**

**1 S615**

**1 S616**

**1 S617**

**1 S618**

**1 S619**

**1 S620**

**1 S621**

**1 S622**

**1 S623**

**1 S624**

**1 S625**

**1 S626**

**1 S627**

**1 S628**

**1 S629**

**1 S630**

**1 S631**

**1 S632**

**1 S633**

**1 S634**

**1 S635**

**1 S636**

**1 S637**

**1 S638**

**1 S639**

**1 S640**

<

**SCHEDULE D  
PHOTO-SIMULATION**

**BEFORE**



**AFTER**



**View: Looking northwest long Westside Road**

*Photo Simulation is a close representation and is for conceptual purposes only – not to scale.  
Proposed design is subject to change based on final engineer plans*

## **Appendix 2: Affidavit of Notification**

## Affidavit of Cypress Land Services

I, Kristina Bell, Land Use Planner, in the City of Vancouver in the Province of B.C., make an Oath and say:

1. THAT I caused to be sent by regular mail, a notification letter, as included in Appendix A, to property owners, occupants and other recipients, as listed in Appendix B, on October 20, 2022.

*Kristina Bell*

---

Kristina Bell – Land Use Planner  
Cypress Land Services Inc.

Sworn/Affirmed/Declared before me at the City of Vancouver, in the Province of B.C., this 20<sup>th</sup> day of October 2022.



---

(Commissioner's Signature)

A Commissioner for Taking Affidavits for the Province of B.C.

Oliver Szenowicz  
A Commissioner for Taking Affidavits for British Columbia  
Cypress Land Services  
1051-409 Granville Street Vancouver BC  
Tel: 778-828-8518 Expires Apr.30 2025

---

(Commissioner's stamp or printed name and expiry date)





**Public Consultation Package – Telecommunications Facility  
Proposal**

**Municipal Address: 2411 Westside Place, Kelowna BC**

**Legal PID: 011-284-346**

**Coordinates: 50.000628°N 119.496622° W**

**ROGERS Site ID: W4847 – McKinley West**

**Contact**

Rogers Communications Inc.  
c/o Cypress Land Services, Attn: Kristina Bell  
Agents to Rogers Communications Inc.  
Suite 1051 - 409 Granville Street  
Vancouver, BC V6C 1T2  
Telephone: 604-259-8809  
Fax: 604-620-0876  
Email: [publicconsultation@cypresslandservices.com](mailto:publicconsultation@cypresslandservices.com)

October 20<sup>th</sup>, 2022





## Purpose of the Notice

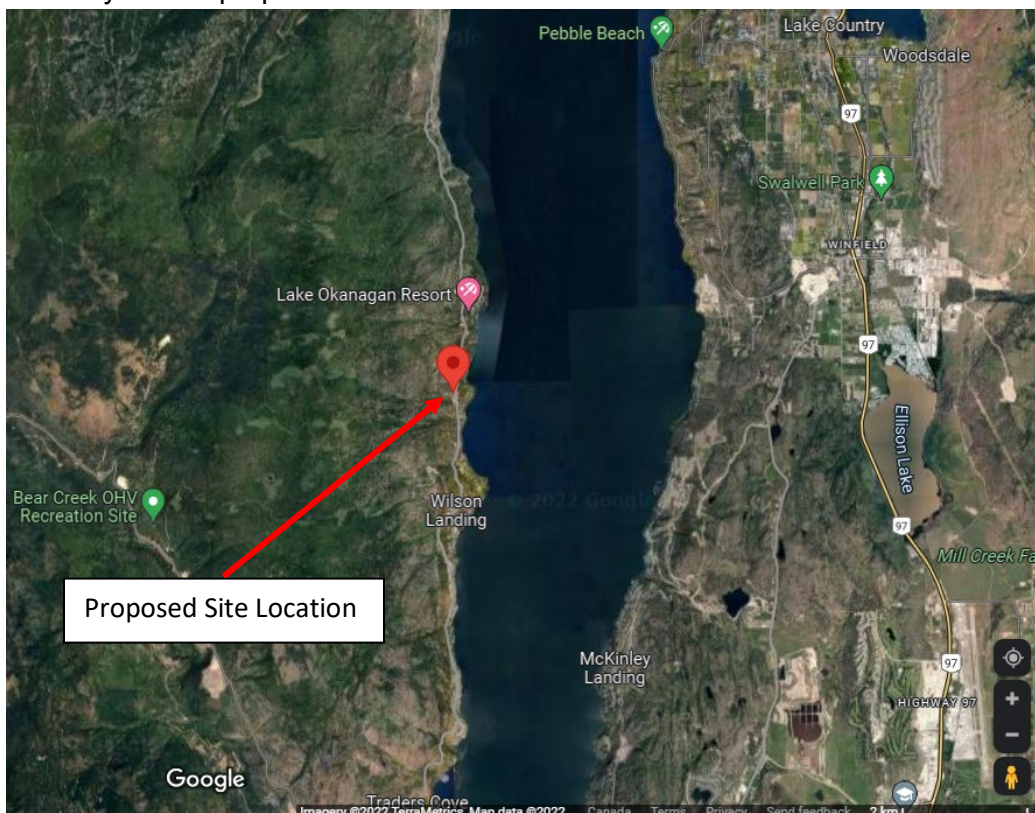
This notification package is an invitation to the public to provide comments regarding a proposed telecommunications tower to be located at 2411 Westside Place, at the coordinates 50.000628°N 119.496622° W.

## Introduction

Rogers Communications Inc. ("Rogers") strives to improve coverage and network quality to remain the leading wireless provider in Canada. Rogers has become aware of the need to improve/provide services in this area along both sides of the lake. Rogers is proposing an installation which consists of a 15.9-meter monopole tower inclusive of a 1m lightning rod, with a fenced equipment compound occupying an area of 8m by 6m. The new facility will improve wireless services to resorts and residential on the shoreline along the east and west sides of the lake.

Innovation, Science, and Economic Development Canada (ISED), formerly Industry Canada, is responsible for the approval of these antenna systems and towers and requires Rogers to consult with the nearby public and local municipality. The Regional District of Central Okanagan (RDCO) does not have its own telecommunications policy or protocol. Therefore, ISED's CPC 2-0-03 will be followed. ISED has exclusive jurisdiction in the licensing of telecommunication sites, such as the proposed tower. As part of the public notification process, it is expected that notices shall be mailed or delivered to all owners and tenants located within a radius of three (3) times the tower height. After reviewing this proposal, the RDCO will make its recommendation to ISED and Rogers.

The antenna system is proposed to be located here:



## Antennas in the Vicinity

Rogers investigated the area for collocation options on nearby tower sites, buildings, and other structures. After careful examination, it has been determined there are no viable existing structures in the area that would be suitable for the operations of Rogers' network equipment. The TELUS tower on site is too short (similar height to the proposed structure) to accommodate Rogers' equipment in order to provide effective improved service coverage. The proposed tower will not have adequate height to add third party equipment because the tower will be too short.

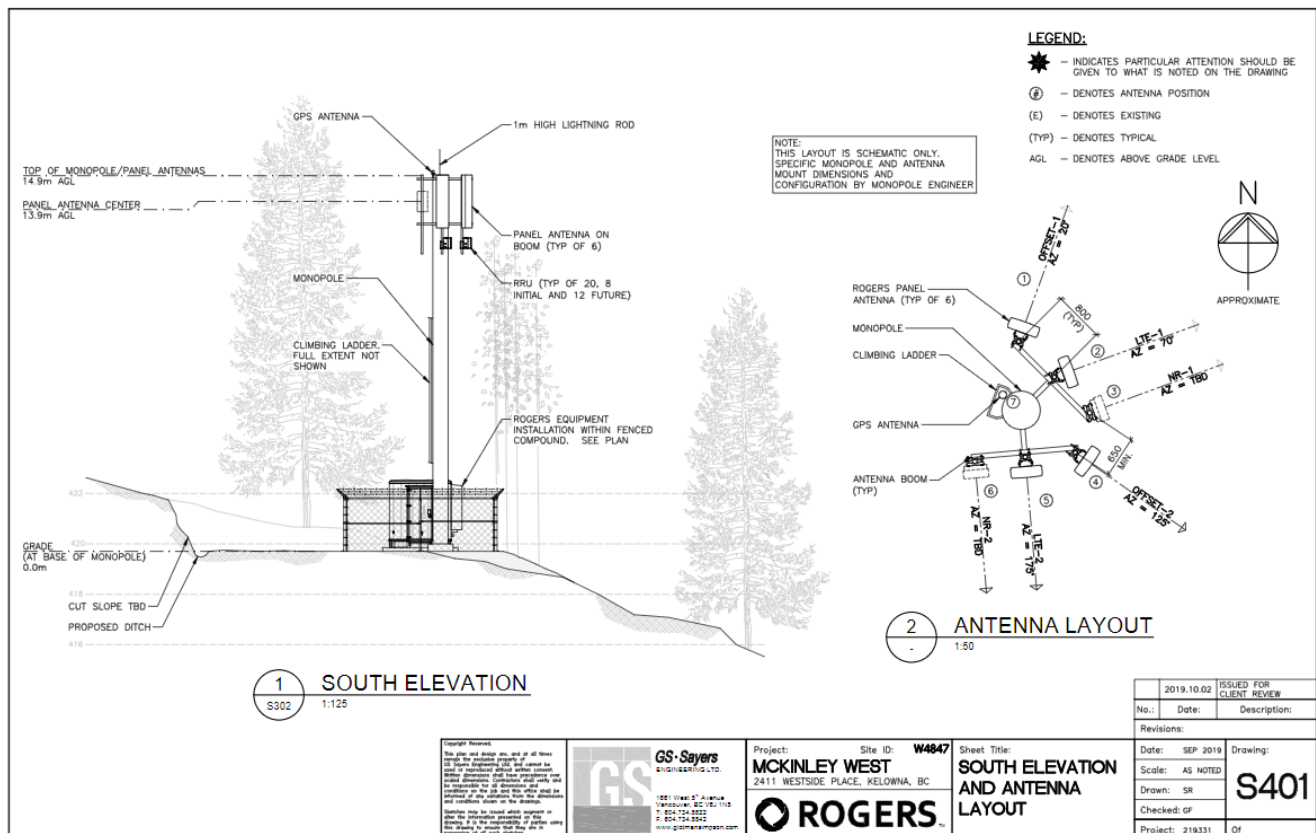
## Network Requirements and Site Selection

Rogers has determined that this area has unreliable wireless services. As a result, the requirement for a new wireless antenna site in this area was acknowledged. An in-depth survey of the surrounding area identified a potential site at this location. The proposed site was chosen to balance the communications needs of the community with the visual impact towers can have on the landscape. A majority of the tower will be screened by trees on site.

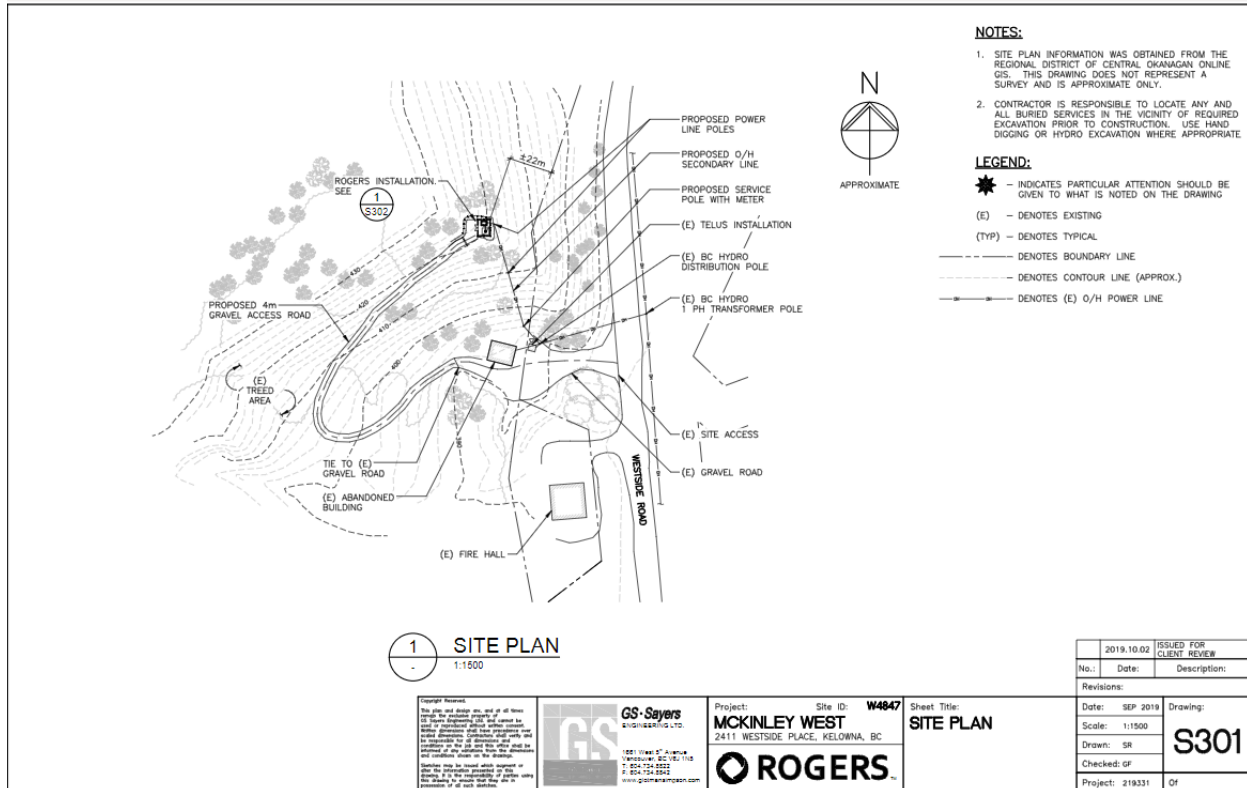
## Details of the Proposed Installation

Rogers has completed preliminary design plans and a photo-simulation. These preliminary design plans are subject to final engineered design, land survey, and approval of Transport Canada. The tower will include six (6) antennas. The Photo-Simulation is a close representation and is for conceptual purposes only. Applications to both Nav Canada and Transport Canada have been submitted; comments are pending.

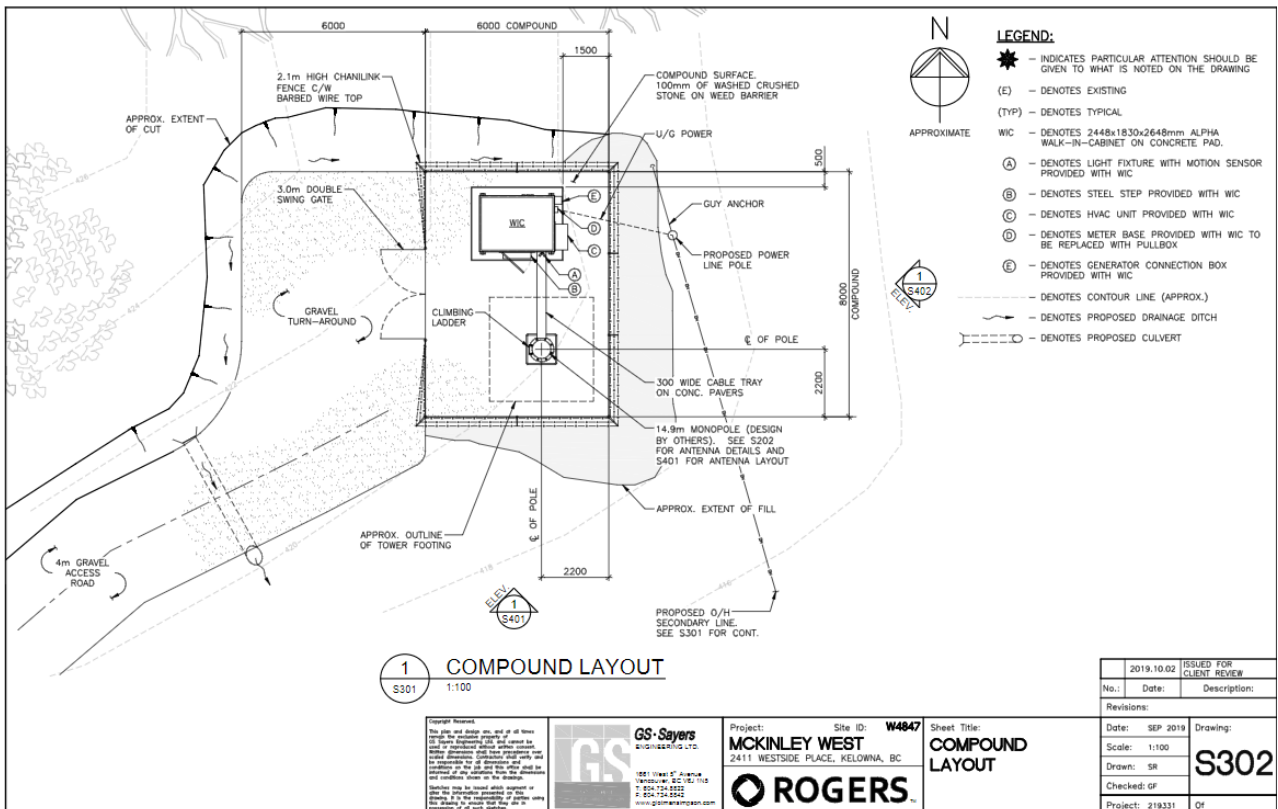
### TOWER PROFILE



## SITE PLAN



## COMPOUND PLAN





## PHOTO-SIMULATION

### BEFORE



### AFTER



### View: Looking northwest along Westside Road

*Photo Simulation is a close representation and is for conceptual purposes only – not to scale.  
Proposed design is subject to change based on final engineer plans*

## **Health Canada's Safety Code 6 Compliance**

Health Canada is responsible for research and investigation to determine and promulgate the health protection guidelines/limits for exposure to electromagnetic energy. Accordingly, Health Canada has developed a guideline entitled "Limits of Human Exposure to Radiofrequency Electromagnetic Field in the Frequency Range from 3kHz to 300 GHz – Safety Code 6". Canada's exposure limits are among the most stringent guidelines that are based on established effects.

ISED, under its authority, has adopted Safety Code 6 for the protection of the general public. As such, ISED requires all proponents and operators to ensure that their installations comply with the Safety Code 6 at all times.

Rogers attests that the radio antenna system described in this notification package will, at all times, comply with Health Canada's Safety Code 6 limits, as may be amended from time to time, for the protection of the general public including any combined effects of additional carrier co-locations and nearby installations within the local radio environment. More information in the area of radiofrequency exposure and health is available at the following web site: <https://www.canada.ca/en/health-canada/services/health-risks-safety/radiation/occupational-exposure-regulations/safety-code-6-radiofrequency-exposure-guidelines.html>

## **Transport Canada's Aeronautical Obstruction Marking Requirements**

Rogers attests that the radio antenna system described in this notification package will comply with Transport Canada / NAV Canada aeronautical safety requirements. Rogers will make all necessary applications to Transport Canada and NAV Canada.

For additional detailed information, please consult Transport Canada at: <https://tc.canada.ca/en/aviation/general-operating-flight-rules/marking-lighting-obstacles-air-navigation>

## **Canadian Environmental Assessment Act**

ISED requires that the installation and modification of antenna systems be done in a manner that complies with appropriate environmental legislation, including the *Canadian Environmental Assessment Act*. Rogers attests the installation proposed will comply with the *Canadian Environmental Assessment Act* requirements.

## **Engineering Practices**

Rogers attests that the radio antenna system described in this notification package will be constructed in compliance with the National Building Code of Canada and comply with good engineering practices including structural adequacy.

## **Rogers and Public Comment Submission**

In order to obtain comments, concerns or questions in regard to the proposed tower site, ISED requires Rogers to send out notification packages to all properties located within three times the height of the proposed tower. The closing period for comments to be received by Rogers is November 23rd, 2022.

## ISED's Spectrum Management

Please be advised that the approval of this site and its design is under the exclusive jurisdiction of the Government of Canada through ISED. For more information on ISED's public consultation guidelines including CPC-2-0-03 contact (<http://www.ic.gc.ca/towers>) or the local ISED office at:

Okanagan-Kootenay District Office  
1726 Dolphin Avenue, Room 603  
Kelowna BC V1Y 9R9  
Tel: 250-470-5026 or 1-800-667-3780  
Fax: 250-470-5045  
Email: [ic.spectrumkelowna-kelownaspectre.ic@canada.ca](mailto:ic.spectrumkelowna-kelownaspectre.ic@canada.ca)  
(By appointment only)

## Closing Date for Submission of Written Public Comments

ISED's rules contain requirements for timely response to your questions, comments or concerns. We will acknowledge receipt of your communication within **14 days** and will provide a formal response to the Municipality and those members of the public who communicated to Rogers, within **60 days**. The members of the public who communicated with Rogers will then have **21 days** to review and reply to Rogers a final response.

## Proponent's Contact Information

Rogers c/o Cypress Land Services, Attn: Kristina Bell  
Agents to Rogers  
Suite 1051, 409 Granville Street  
Vancouver, BC V6C 1T2  
Telephone: 604-259-8809  
Fax: 604-620-0876  
Email: [publicconsultation@cypresslandservices.com](mailto:publicconsultation@cypresslandservices.com)

## Local Government Contact Information:

Regional District of Central Okanagan  
Community Services  
Todd Cashin  
1450 KLO Road  
Kelowna, BC, Canada V1W 3Z4  
Phone: [250-469-6227](tel:250-469-6227)  
Email: [planning@rdco.com](mailto:planning@rdco.com)



**Public Comment Record**  
**Rogers Proposed Telecommunications Facility Installation**  
**Municipal Address: 2411 Westside Place, Kelowna**  
**Legal: PID: 011-284-346**  
**Coordinates: 50.000628°N 119.496622° W**  
**ROGERS Site ID: W4847 – McKinley West**

**Name:**

---

**Address:**

---

**Telephone:**

---

**E-mail:**

---

**Comments**

**To be considered part of this consultation, comments must be received by close of business day on November 23, 2022. Please forward your comments to:**

**Rogers Communications Inc.**  
**c/o Cypress Land Services**  
**Suite 1051 - 409 Granville Street**  
**Vancouver, BC V6C 1T2**  
**Email: [publicconsultation@cypresslandservices.com](mailto:publicconsultation@cypresslandservices.com)**  
**Fax: 604-620-0876**

---

---

---

---

---

---

---

---

---

---

---

*\* Comments received shall form part of ISED's Public Consultation Process under the Spectrum Management and Telecommunications Client Procedures Circular CPC-2-0-03, Issue 6.*

Cypress Land Services Inc.  
Suite 1051 - 409 Granville Street,  
Vancouver, BC V6C 1T2

Rogers Communications Inc.  
1900 – 4710 Kingsway  
Burnaby, BC V5H 4M5

ISED  
Okanagan-Kootenay District Office  
1726 Dolphin Avenue, Room 603  
Kelowna BC V1Y 9R9  
Email: [ic.spectrumkelowna-kelownaspectre.ic@canada.ca](mailto:ic.spectrumkelowna-kelownaspectre.ic@canada.ca)

FrontCounter BC Vernon  
2501-14 Avenue  
Vernon, BC  
V1T 8Z1

THE SYNOD OF THE DIOCESE OF  
KOOTENAY  
201 – 380 Leathead Road  
Kelowna, BC  
V1X 2H8

OCCUPANT  
2411 Westside Place, Kelowna BC  
V1Z 3T5

Regional District of Central Okanagan  
Community Services  
1450 KLO Road  
Kelowna, BC, Canada  
V1W 3Z4

OCCUPANT  
2404 Westside Place, Kelowna BC  
V1Z 3T5

W4847 = 8

**IMPORTANT INFORMATION ENCLOSED  
REGARDING A PROPOSED  
TELECOMMUNICATIONS FACILITY WITHIN  
APPROX. 53 METRES OF A PROPERTY  
YOU HAVE AN INTEREST IN**

**IMPORTANT INFORMATION ENCLOSED  
REGARDING A PROPOSED  
TELECOMMUNICATIONS FACILITY WITHIN  
APPROX. 53 METRES OF A PROPERTY  
YOU HAVE AN INTEREST IN**

**IMPORTANT INFORMATION ENCLOSED  
REGARDING A PROPOSED  
TELECOMMUNICATIONS FACILITY WITHIN  
APPROX. 53 METRES OF A PROPERTY  
YOU HAVE AN INTEREST IN**

**IMPORTANT INFORMATION ENCLOSED  
REGARDING A PROPOSED  
TELECOMMUNICATIONS FACILITY WITHIN  
APPROX. 53 METRES OF A PROPERTY  
YOU HAVE AN INTEREST IN**

**IMPORTANT INFORMATION ENCLOSED  
REGARDING A PROPOSED  
TELECOMMUNICATIONS FACILITY WITHIN  
APPROX. 53 METRES OF A PROPERTY  
YOU HAVE AN INTEREST IN**

**IMPORTANT INFORMATION ENCLOSED  
REGARDING A PROPOSED  
TELECOMMUNICATIONS FACILITY WITHIN  
APPROX. 53 METRES OF A PROPERTY  
YOU HAVE AN INTEREST IN**

**IMPORTANT INFORMATION ENCLOSED  
REGARDING A PROPOSED  
TELECOMMUNICATIONS FACILITY WITHIN  
APPROX. 53 METRES OF A PROPERTY  
YOU HAVE AN INTEREST IN**

**IMPORTANT INFORMATION ENCLOSED  
REGARDING A PROPOSED  
TELECOMMUNICATIONS FACILITY WITHIN  
APPROX. 53 METRES OF A PROPERTY  
YOU HAVE AN INTEREST IN**



c/o Cypress Land Services  
Suite 1051, 409 Granville St.  
Vancouver, BC V6C 1T2



c/o Cypress Land Services  
Suite 1051, 409 Granville St.  
Vancouver, BC V6C 1T2



c/o Cypress Land Services  
Suite 1051, 409 Granville St.  
Vancouver, BC V6C 1T2



c/o Cypress Land Services  
Suite 1051, 409 Granville St.  
Vancouver, BC V6C 1T2



c/o Cypress Land Services  
Suite 1051, 409 Granville St.  
Vancouver, BC V6C 1T2



c/o Cypress Land Services  
Suite 1051, 409 Granville St.  
Vancouver, BC V6C 1T2



c/o Cypress Land Services  
Suite 1051, 409 Granville St.  
Vancouver, BC V6C 1T2

## **Appendix 2: Extended Notification**



**Public Consultation Package – Telecommunications Facility  
Proposal**

**Municipal Address: 2411 Westside Place, Kelowna BC**

**Legal PID: 011-284-346**

**Coordinates: 50.000628°N 119.496622° W**

**ROGERS Site ID: W4847 – McKinley West**

**Contact**

Rogers Communications Inc.  
c/o Cypress Land Services, Attn: Kristina Bell  
Agents to Rogers Communications Inc.  
Suite 1051 - 409 Granville Street  
Vancouver, BC V6C 1T2  
Telephone: 604-259-8809  
Fax: 604-620-0876  
Email: [publicconsultation@cypresslandservices.com](mailto:publicconsultation@cypresslandservices.com)

January 10<sup>th</sup>, 2023



## Purpose of the Notice

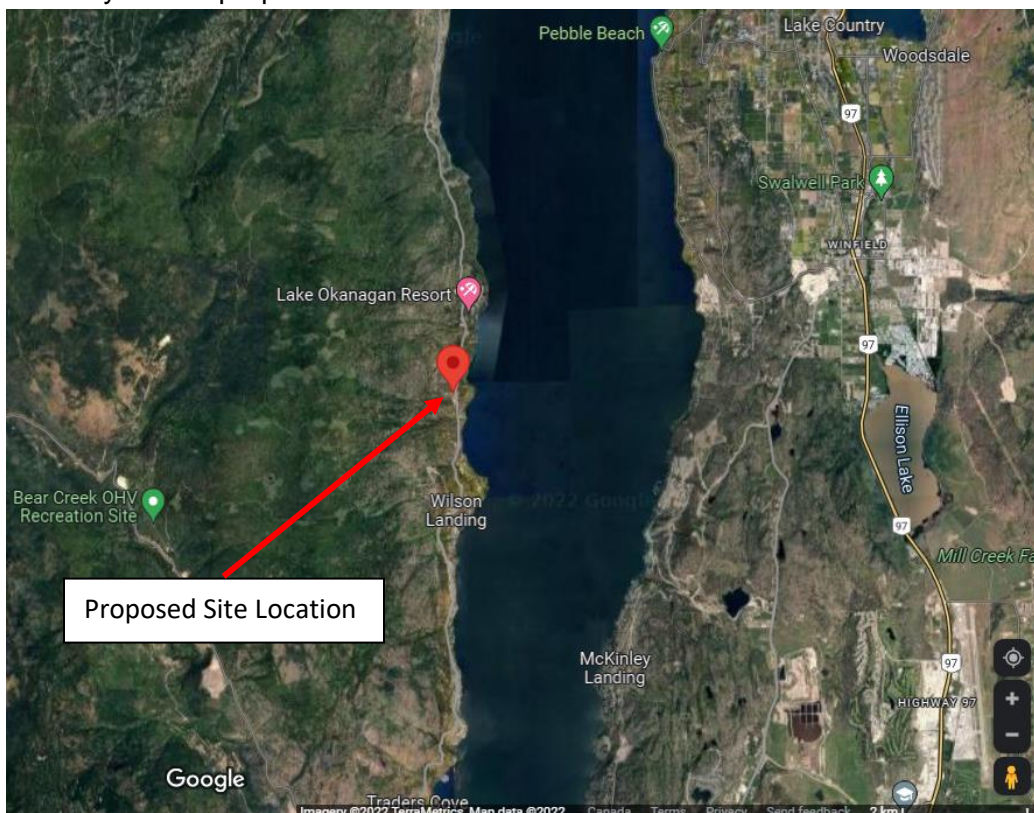
This notification package is an invitation to the public to provide comments regarding a proposed telecommunications tower to be located at 2411 Westside Place, at the coordinates 50.000628°N 119.496622° W.

## Introduction

Rogers Communications Inc. (“Rogers”) strives to improve coverage and network quality to remain the leading wireless provider in Canada. Rogers has become aware of the need to improve/provide services in this area along both sides of the lake. Rogers is proposing an installation which consists of a 15.9-meter monopole tower inclusive of a 1m lightning rod, with a fenced equipment compound occupying an area of 8m by 6m. The new facility will improve wireless services to resorts and residential on the shoreline along the east and west sides of the lake.

Innovation, Science, and Economic Development Canada (ISED), formerly Industry Canada, is responsible for the approval of these towers and requires Rogers to consult with the nearby public and local municipality. ISED has exclusive jurisdiction in the licensing of telecommunication sites, such as the proposed tower. The Regional District of Central Okanagan (RDCO) does not have its own telecommunications policy or protocol and therefore, ISED’s CPC 2-0-03 will be followed. As part of the public notification process, ISED requires a notification radius of three (3) times the tower height, however, it has been requested by RDCO staff that notifications be mailed to property owners and occupants within a radius of 200m. After reviewing this proposal, the RDCO will make its recommendation to ISED and Rogers.

The antenna system is proposed to be located here:



## Antennas in the Vicinity

Rogers investigated the area for collocation options on nearby tower sites, buildings, and other structures. After careful examination, it has been determined there are no viable existing structures in the area that would be suitable for the operations of Rogers' network equipment. The TELUS tower on site is too short (similar height to the proposed structure) to accommodate Rogers' equipment in order to provide effective improved service coverage. The proposed tower will not have adequate height to add third party equipment because the tower will be too short.

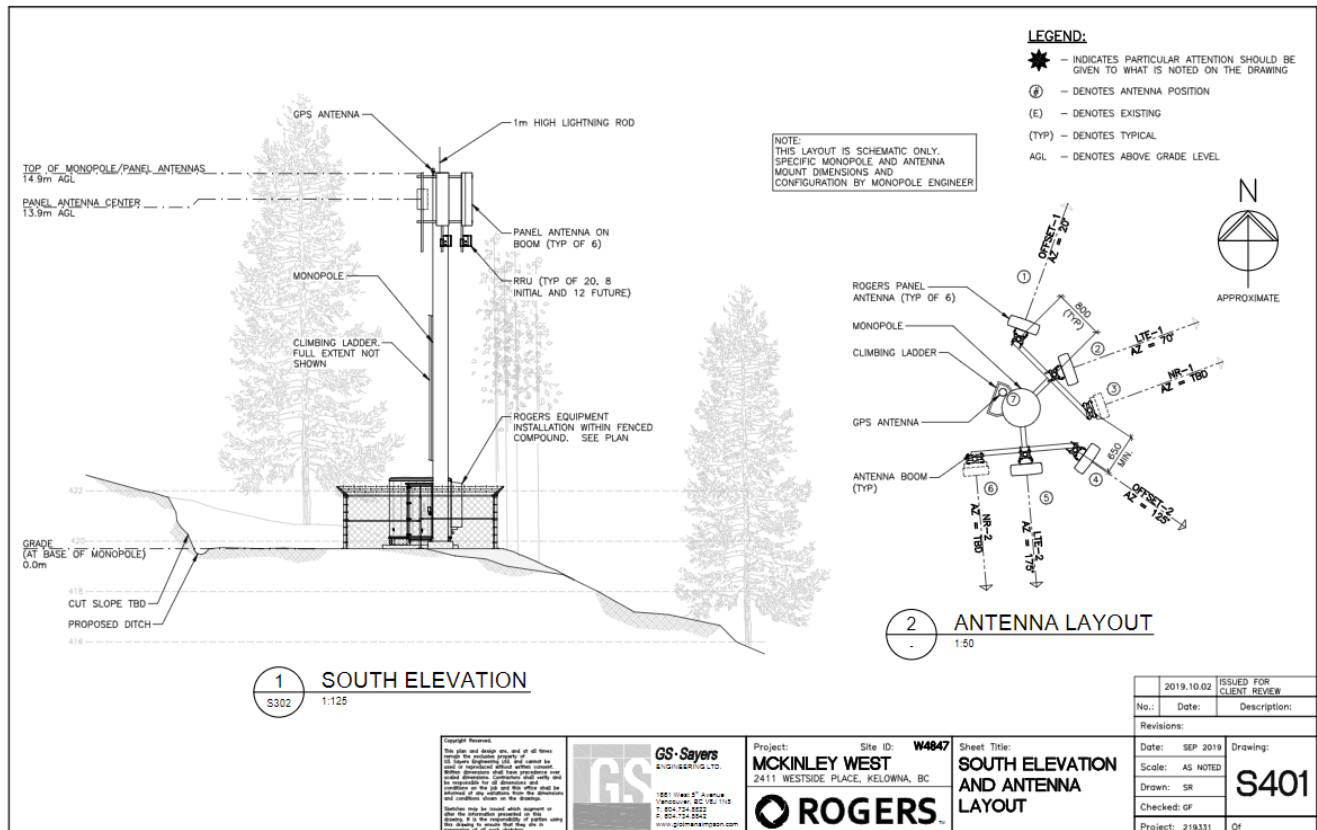
## Network Requirements and Site Selection

Rogers has determined that this area has unreliable wireless services. As a result, the requirement for a new wireless antenna site in this area was acknowledged. An in-depth survey of the surrounding area identified a potential site at this location. The proposed site was chosen to balance the communications needs of the community with the visual impact towers can have on the landscape. A majority of the tower will be screened by trees on site.

## Details of the Proposed Installation

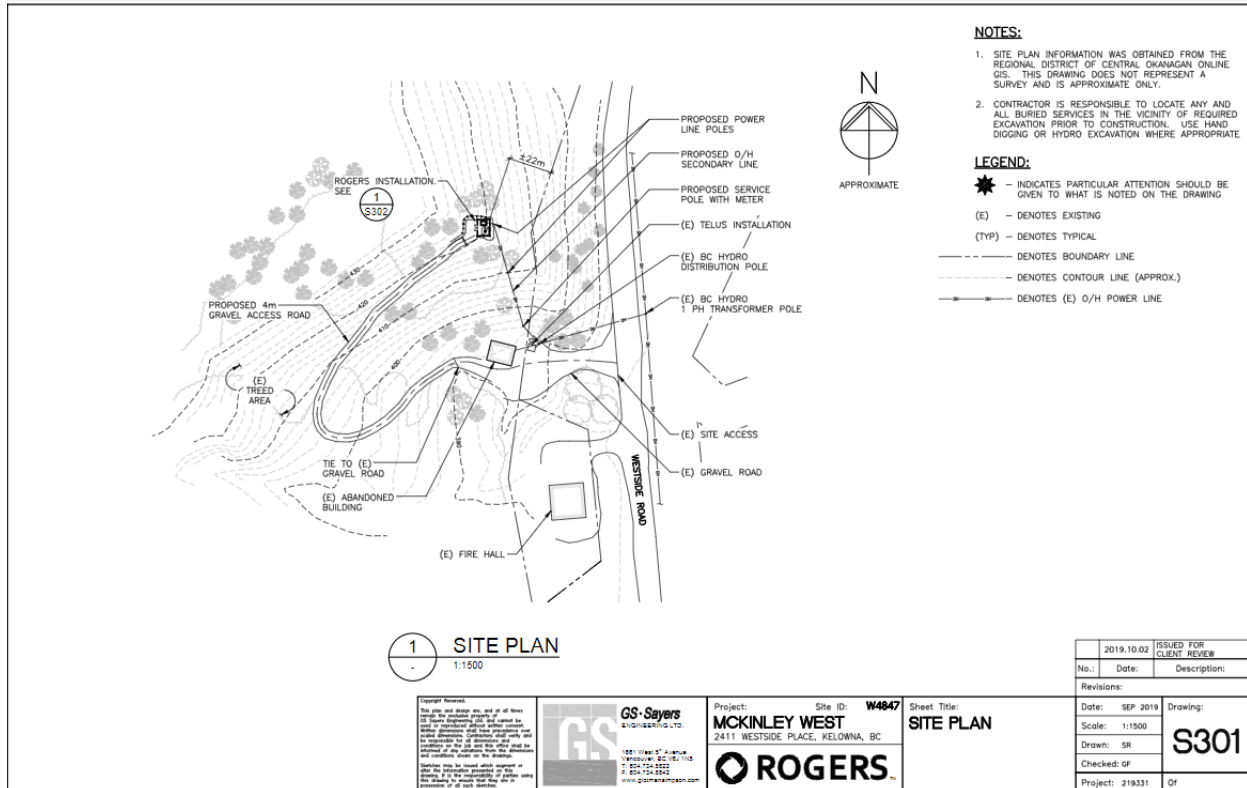
Rogers has completed preliminary design plans and a photo-simulation. These preliminary design plans are subject to final engineered design, land survey, and approval of Transport Canada. The tower will include six (6) antennas. The Photo-Simulation is a close representation and is for conceptual purposes only. Applications to both Nav Canada and Transport Canada have been submitted; comments are pending.

### TOWER PROFILE

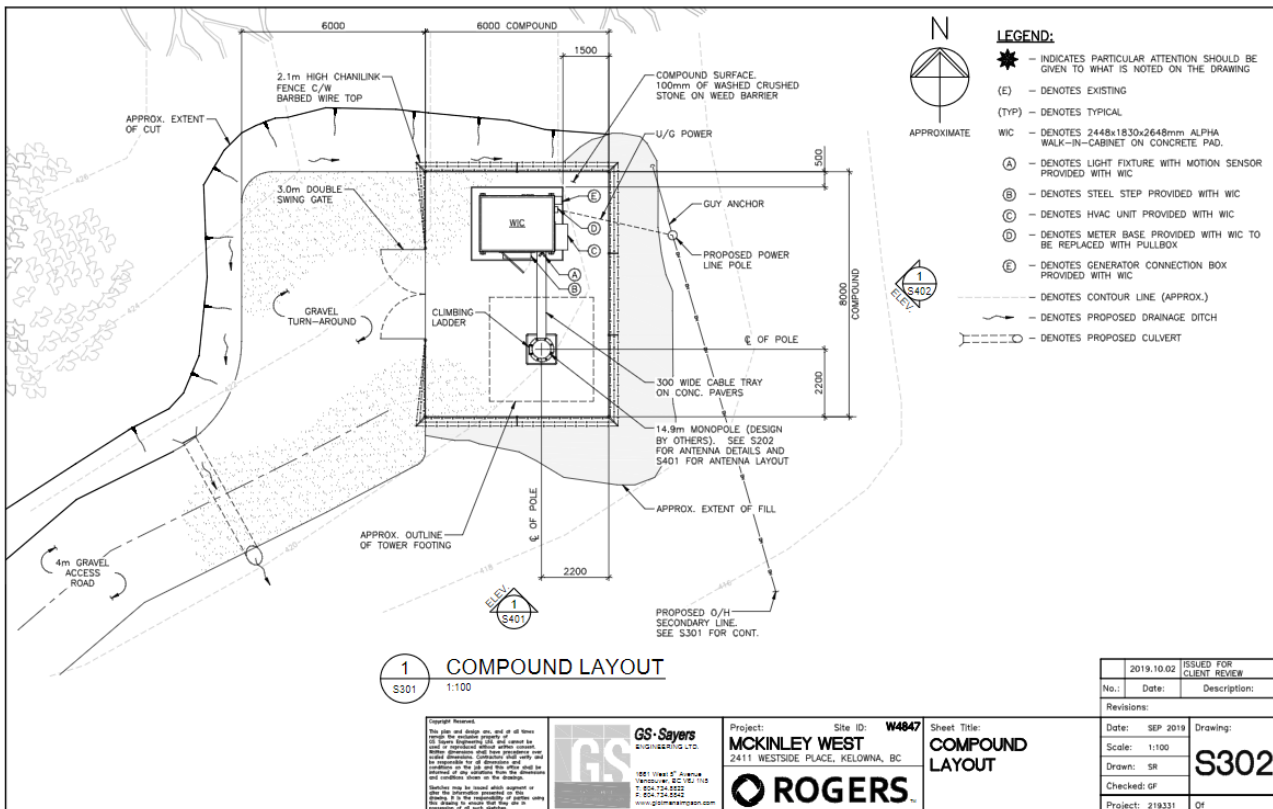




## SITE PLAN



## COMPOUND PLAN

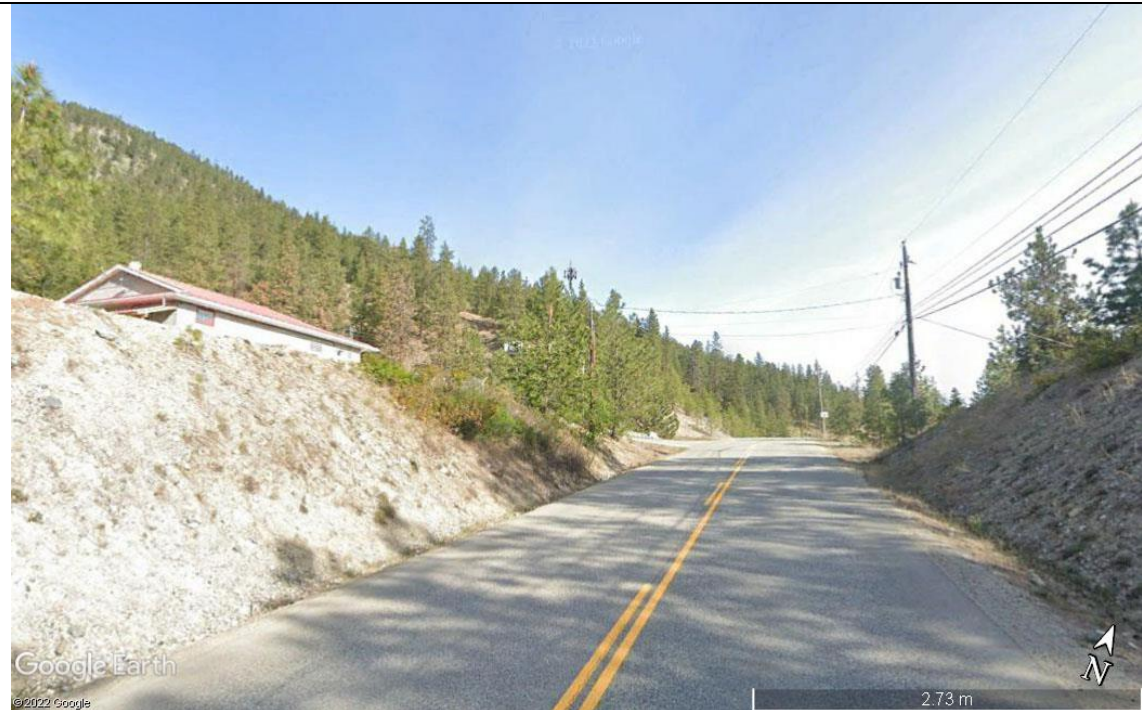


## PHOTO-SIMULATION

### BEFORE



### AFTER



### View: Looking northwest along Westside Road

*Photo Simulation is a close representation and is for conceptual purposes only – not to scale.  
Proposed design is subject to change based on final engineer plans*

## **Health Canada's Safety Code 6 Compliance**

Health Canada is responsible for research and investigation to determine and promulgate the health protection guidelines/limits for exposure to electromagnetic energy. Accordingly, Health Canada has developed a guideline entitled "Limits of Human Exposure to Radiofrequency Electromagnetic Field in the Frequency Range from 3kHz to 300 GHz – Safety Code 6". Canada's exposure limits are among the most stringent guidelines that are based on established effects.

ISED, under its authority, has adopted Safety Code 6 for the protection of the general public. As such, ISED requires all proponents and operators to ensure that their installations comply with the Safety Code 6 at all times.

Rogers attests that the radio antenna system described in this notification package will, at all times, comply with Health Canada's Safety Code 6 limits, as may be amended from time to time, for the protection of the general public including any combined effects of additional carrier co-locations and nearby installations within the local radio environment. More information in the area of radiofrequency exposure and health is available at the following web site: <https://www.canada.ca/en/health-canada/services/health-risks-safety/radiation/occupational-exposure-regulations/safety-code-6-radiofrequency-exposure-guidelines.html>

## **Transport Canada's Aeronautical Obstruction Marking Requirements**

Rogers attests that the radio antenna system described in this notification package will comply with Transport Canada / NAV Canada aeronautical safety requirements. Rogers will make all necessary applications to Transport Canada and NAV Canada.

For additional detailed information, please consult Transport Canada at: <https://tc.canada.ca/en/aviation/general-operating-flight-rules/marking-lighting-obstacles-air-navigation>

## **Impact Assessment Act**

ISED requires that the installation and modification of antenna systems be done in a manner that complies with appropriate environmental legislation, including the *Impact Assessment Act*. Rogers attests the installation proposed will comply with the *Impact Assessment Act* requirements.

## **Engineering Practices**

Rogers attests that the radio antenna system described in this notification package will be constructed in compliance with the National Building Code of Canada and comply with good engineering practices including structural adequacy.

## **Rogers and Public Comment Submission**

In order to obtain comments, concerns, or questions in regard to the proposed tower site, the RDCO has requested that notification packages be sent to all properties located within 200m of the proposed tower, giving residents 14 days to respond. The closing period for comments to be received by Rogers regarding this Notification Package is January 26, 2023.

## ISED's Spectrum Management

Please be advised that the approval of this site and its design is under the exclusive jurisdiction of the Government of Canada through ISED. For more information on ISED's public consultation guidelines including CPC-2-0-03 contact (<http://www.ic.gc.ca/towers>) or the local ISED office at:

Okanagan-Kootenay District Office  
1726 Dolphin Avenue, Room 603  
Kelowna BC V1Y 9R9  
Tel: 250-470-5026 or 1-800-667-3780  
Fax: 250-470-5045  
Email: [ic.spectrumkelowna-kelownaspectre.ic@canada.ca](mailto:ic.spectrumkelowna-kelownaspectre.ic@canada.ca)  
(By appointment only)

## Closing Date for Submission of Written Public Comments

ISED's rules contain requirements for timely response to your questions, comments or concerns. We will acknowledge receipt of your communication within **14 days** and will provide a formal response to the Municipality and those members of the public who communicated to Rogers, within **60 days**. The members of the public who communicated with Rogers will then have **21 days** to review and reply to Rogers a final response.

## Proponent's Contact Information

Rogers c/o Cypress Land Services, Attn: Kristina Bell  
Agents to Rogers  
Suite 1051, 409 Granville Street  
Vancouver, BC V6C 1T2  
Telephone: 604-259-8809  
Fax: 604-620-0876  
Email: [publicconsultation@cypresslandservices.com](mailto:publicconsultation@cypresslandservices.com)

## Local Government Contact Information:

Regional District of Central Okanagan  
Community Services  
Shaun O'Dea, Planner  
1450 KLO Road  
Kelowna, BC, Canada V1W 3Z4  
Phone: [250-469-6227](tel:250-469-6227)  
Email: [Shaun.ODea@rdco.com](mailto:Shaun.ODea@rdco.com)



**Public Comment Record**  
**Rogers Proposed Telecommunications Facility Installation**  
**Municipal Address: 2411 Westside Place, Kelowna**  
**Legal: PID: 011-284-346**  
**Coordinates: 50.000628°N 119.496622° W**  
**ROGERS Site ID: W4847 – McKinley West**

**Name:**

---

**Address:**

---

**Telephone:**

---

**E-mail:**

---

**Comments**

**To be considered part of this consultation, comments must be received by close of business day on January 26, 2023. Please forward your comments to:**

**Rogers Communications Inc.**  
**c/o Cypress Land Services**  
**Suite 1051 - 409 Granville Street**  
**Vancouver, BC V6C 1T2**

**Email: [publicconsultation@cypresslandservices.com](mailto:publicconsultation@cypresslandservices.com)**

**Fax: 604-620-0876**

---

---

---

---

---

---

---

---

---

---

---

*\* Comments received shall form part of ISED's Public Consultation Process under the Spectrum Management and Telecommunications Client Procedures Circular CPC-2-0-03, Issue 6.*

**Front Counter BC Vernon**  
2501-14 Avenue  
Vernon, BC  
V1T 8Z1

Crown Provincial  
C/O KAMLOOPS FLNR SERVICE CENTRE  
441 COLUMBIA ST  
KAMLOOPS BC V2C 2T3

CENTRAL OKANAGAN (REGIONAL  
DISTRICT)  
1450 K.L.O. RD  
KELOWNA BC V1W 3Z4

201-380 LEATHEAD RD  
KELOWNA BC V1X 2H8

OCCUPANT  
2411 WESTSIDE PL KELOWNA BC  
V1Z 3T5

OCCUPANT  
2396 WESTSIDE RD KELOWNA BC  
V1Z 3T5

OCCUPANT  
2404 WESTSIDE RD KELOWNA BC  
V1Z 3T5

2326 WESTSIDE RD N  
KELOWNA BC  
V1Z 3T5

BC TRANSPORTATION FINANCING  
AUTHORITY  
PO BOX 9850 STN PROV GOVT  
VICTORIA BC V8W 9T5

2315 WESTSIDE PL  
KELOWNA BC  
V1Z 3T5

2307 WESTSIDE PL  
KELOWNA BC  
V1Z 3T5

2808 MONTALBAN CRES NW  
CALGARY AB  
T3B 1E3

OCCUPANT  
2289 WESTSIDE PL KELOWNA BC  
V1Z 3T5

2323 WESTSIDE PL  
KELOWNA BC  
V1Z 3T5

880 MANHATTEN DR  
KELOWNA BC  
V1Y 1H5

OCCUPANT  
2329 WESTSIDE PL KELOWNA BC  
V1Z 3T5

102-1910 CAPISTRANO DR  
KELOWNA BC  
V1V 2S5

OCCUPANT  
2653 WESTSIDE RD N KELOWNA BC  
V1Z 3T2

2274 WESTSIDE PL  
KELOWNA BC  
V1Z 3T5

4023 GARDENIA CRT  
KELOWNA BC  
V1W 3Y2

W4847 = 20

**IMPORTANT INFORMATION ENCLOSED  
REGARDING A PROPOSED  
TELECOMMUNICATIONS FACILITY WITHIN  
APPROX. 200 METRES OF A PROPERTY  
YOU HAVE AN INTEREST IN**

**IMPORTANT INFORMATION ENCLOSED  
REGARDING A PROPOSED  
TELECOMMUNICATIONS FACILITY WITHIN  
APPROX. 200 METRES OF A PROPERTY  
YOU HAVE AN INTEREST IN**

**IMPORTANT INFORMATION ENCLOSED  
REGARDING A PROPOSED  
TELECOMMUNICATIONS FACILITY WITHIN  
APPROX. 200 METRES OF A PROPERTY  
YOU HAVE AN INTEREST IN**

**IMPORTANT INFORMATION ENCLOSED  
REGARDING A PROPOSED  
TELECOMMUNICATIONS FACILITY WITHIN  
APPROX. 200 METRES OF A PROPERTY  
YOU HAVE AN INTEREST IN**

**IMPORTANT INFORMATION ENCLOSED  
REGARDING A PROPOSED  
TELECOMMUNICATIONS FACILITY WITHIN  
APPROX. 200 METRES OF A PROPERTY  
YOU HAVE AN INTEREST IN**

**IMPORTANT INFORMATION ENCLOSED  
REGARDING A PROPOSED  
TELECOMMUNICATIONS FACILITY WITHIN  
APPROX. 200 METRES OF A PROPERTY  
YOU HAVE AN INTEREST IN**

**IMPORTANT INFORMATION ENCLOSED  
REGARDING A PROPOSED  
TELECOMMUNICATIONS FACILITY WITHIN  
APPROX. 200 METRES OF A PROPERTY  
YOU HAVE AN INTEREST IN**

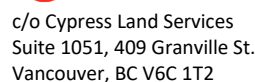
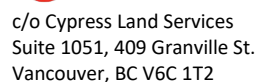
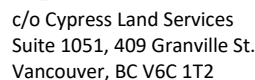
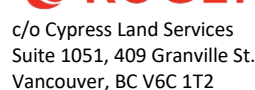
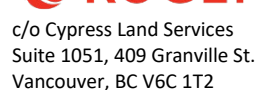
**IMPORTANT INFORMATION ENCLOSED  
REGARDING A PROPOSED  
TELECOMMUNICATIONS FACILITY WITHIN  
APPROX. 200 METRES OF A PROPERTY  
YOU HAVE AN INTEREST IN**

**IMPORTANT INFORMATION ENCLOSED  
REGARDING A PROPOSED  
TELECOMMUNICATIONS FACILITY WITHIN  
APPROX. 200 METRES OF A PROPERTY  
YOU HAVE AN INTEREST IN**

**IMPORTANT INFORMATION ENCLOSED  
REGARDING A PROPOSED  
TELECOMMUNICATIONS FACILITY WITHIN  
APPROX. 200 METRES OF A PROPERTY  
YOU HAVE AN INTEREST IN**

**IMPORTANT INFORMATION ENCLOSED  
REGARDING A PROPOSED  
TELECOMMUNICATIONS FACILITY WITHIN  
APPROX. 200 METRES OF A PROPERTY  
YOU HAVE AN INTEREST IN**

**IMPORTANT INFORMATION ENCLOSED  
REGARDING A PROPOSED  
TELECOMMUNICATIONS FACILITY WITHIN  
APPROX. 200 METRES OF A PROPERTY  
YOU HAVE AN INTEREST IN**







c/o Cypress Land Services  
Suite 1051, 409 Granville St.  
Vancouver, BC V6C 1T2



c/o Cypress Land Services  
Suite 1051, 409 Granville St.  
Vancouver, BC V6C 1T2



c/o Cypress Land Services  
Suite 1051, 409 Granville St.  
Vancouver, BC V6C 1T2



c/o Cypress Land Services  
Suite 1051, 409 Granville St.  
Vancouver, BC V6C 1T2



c/o Cypress Land Services  
Suite 1051, 409 Granville St.  
Vancouver, BC V6C 1T2



c/o Cypress Land Services  
Suite 1051, 409 Granville St.  
Vancouver, BC V6C 1T2

## **Appendix 4: Sample Resolution**

## **Resolution**

Whereas Rogers Communications Inc. ("Rogers") proposes to erect a wireless telecommunication tower and accessory structure on certain lands more particularly described as PID: 011-284-346, with the civic address of, 2411 Westside Place, Kelowna BC;

AND WHEREAS proponents of telecommunication towers are regulated by ISED on behalf of the Government of Canada and as part of their approval, ISED requires proponents to consult with land use authorities as provided for in CPC-2-0-03;

AND WHEREAS Rogers has consulted with the RDCO and the RDCO has no objection to the proposed telecommunications tower;

AND WHEREAS Rogers has consulted with the public by notifying all property owners and occupants within three (3) times the tower height and has provided 30 days for written public comment;

AND WHEREAS there are no significant land use issues identified by the consultation;

NOW THEREFORE BE IT RESOLVED THAT:

1. The Clerk be instructed to advise Rogers that:
  - a) Rogers has satisfactorily completed its consultation with RDCO;
  - b) The RDCO is satisfied with Rogers' public consultation process and does not require any further consultation with the public; and
  - c) The RDCO concurs with Rogers proposal to construct a wireless telecommunications facility provided it is constructed substantially in accordance with the plans submitted to it and described as W4847.