

Kalamoior Regional Park Management Plan

Regional District of Central Okanagan Board Meeting

April 3, 2025

1450 K.L.O. Road
Kelowna, BC, V1W 3Z4
rdco.com



Purpose:

- To seek Regional Board approval for the Kalamo Regional Park Management Plan dated April 2025.





Management Plan Overview:

- Park Assessment
 - Site description & environmental values
 - Park history & Indigenous history
 - Site analysis
 - S.W.O.T.
- Community Engagement
 - Love for the park
 - Feedback on parking and trail design concepts
- Management Plan
 - Vision
 - Management zones
 - Development concept plans
 - Goals, objectives & recommended actions
- 20-year Implementation Plan
 - Capital
 - Operational

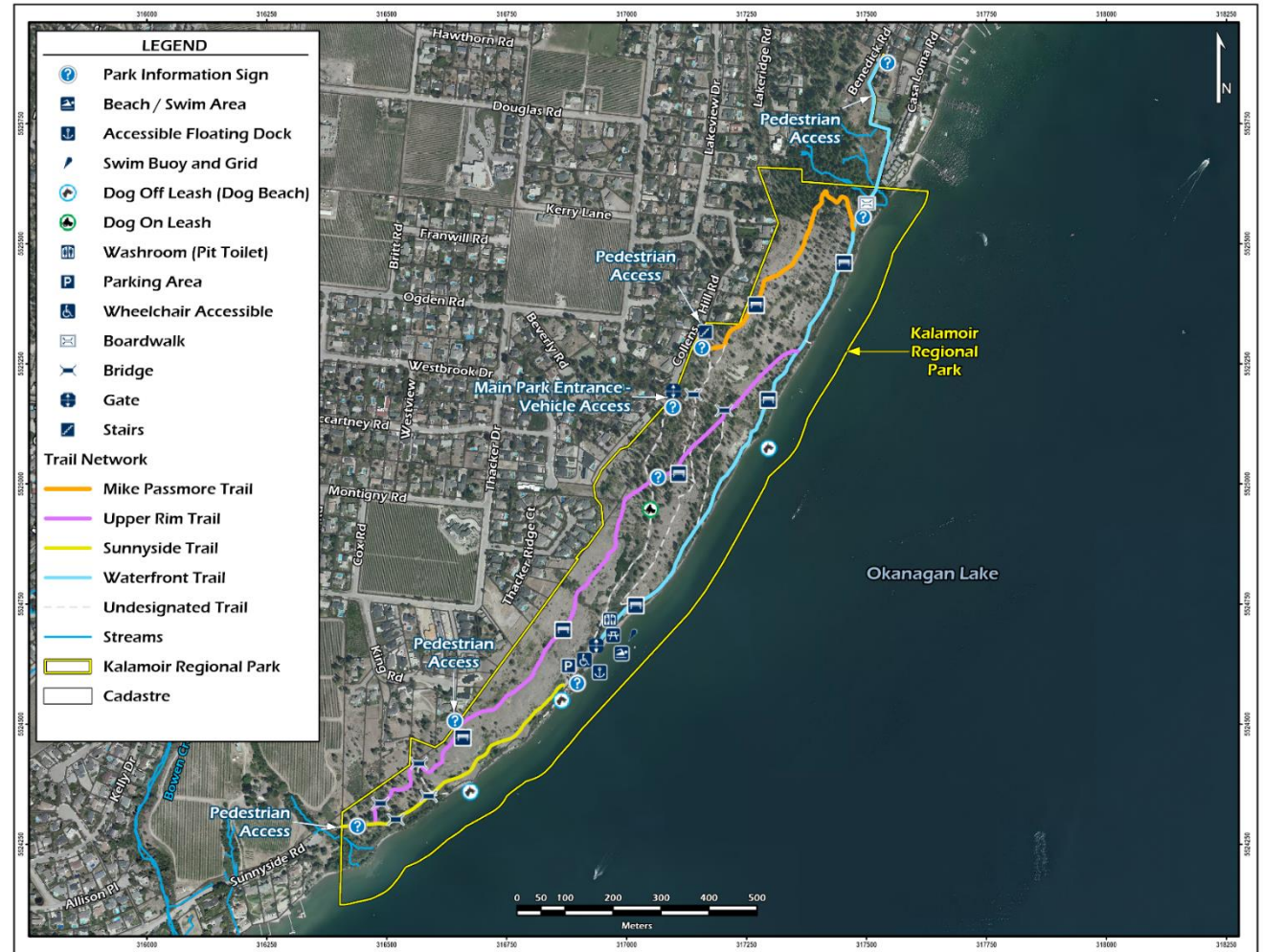
Vision Statement

Kalamoior Regional Park's natural scenery, Okanagan Lake shoreline and upland grassland ecosystems are an enticing and welcoming destination for park visitors and wildlife. The park is a place of solitude, appreciation, and inspiration for the public to experience and connect with nature while participating in outdoor recreational pursuits for generations to come.

Kalamoior Regional Park

Highlights

- Natural Area Park (27.6 ha)
- Okanagan Lake foreshore (1.8 km)
- Universally accessible canoe/kayak launch
- High ecological diversity
- Network of natural surfaced trails
- Bordered by residential



Park Assessment

Strengths

- Multi-modal recreation trails
- Established users with active stake in the Park's wellbeing
- Universally accessible dock and canoe / kayak launch
- Access to Okanagan Lake and beaches
- Functioning ecosystems & diversity of wildlife



Park Assessment

Weaknesses

- Limited parking available
- Active sediment and erosion concerns
- Invasive plant populations



Park Assessment

Opportunities

- Collaborate with WFN to incorporate indigenous knowledge, language and cultural values
- Work with partners and community volunteers to advance Park goals
- Upgrade Waterfront and Sunnyside Trails for improved multi-modal use and to decrease park user conflicts
- Parking lot upgrades to improve accessibility



Park Assessment

Threats

- Effects of climate change
- Increasing urban density and population



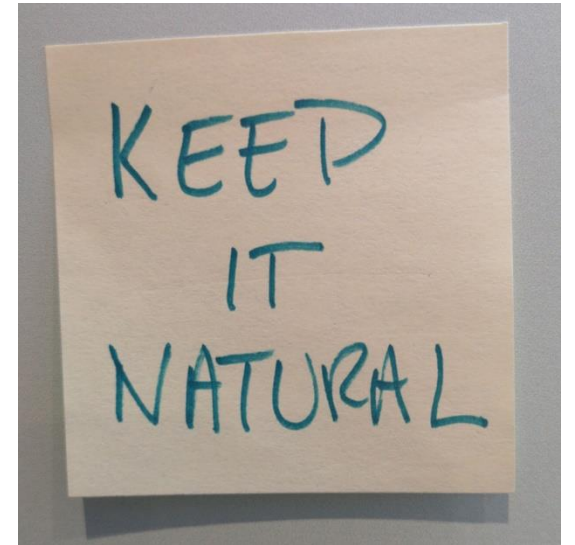
Public Engagement – Phase 1

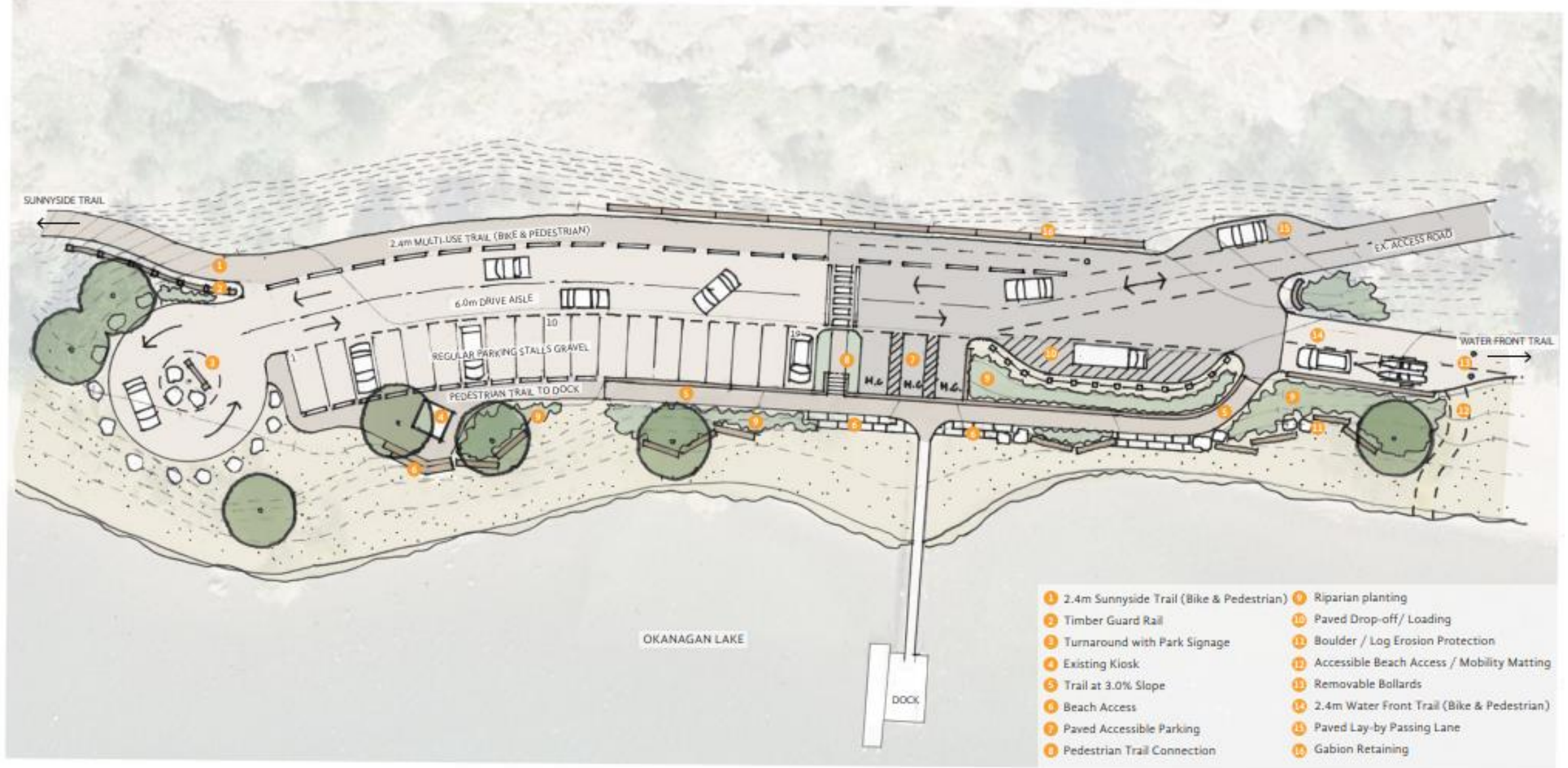
What people love

- Walking/hiking
- Dog walking
- Wildlife viewing
- Swimming
- Place to gather with friends/family

Priorities for Improvement

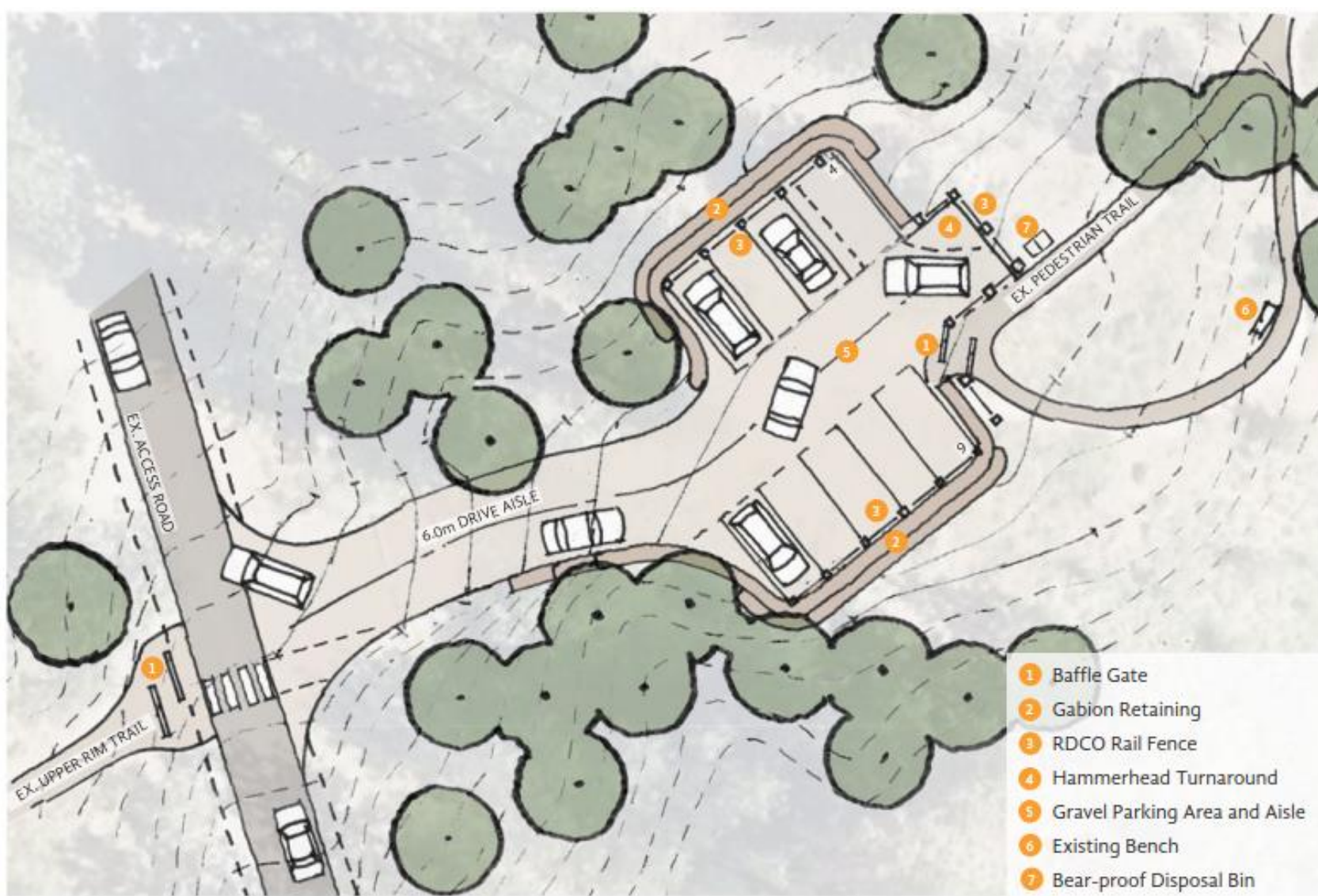
- Trail and parking improvements
- Enhancement of neighborhood access
- Updated signage
- Promote wildlife and habitat conservation





FEATURES:

- 19 parking stalls + 3 accessible/loading stalls
- 2.4m wide multi-use trail (bike & pedestrian)
- Paved entrance with accessible drop-off area
- Accessible trail connection to dock
- Improved shoreline riparian enhancement and erosion prevention
- Gate replaced with removable bollards
- Lay-by passing at entrance



FEATURES:

- Gravel parking area (9 stalls)
- 6.0m parking drive aisle
- Hammerhead turnaround
- Retaining with cut and fill in disturbed areas
- Improved trail signage + trail connection

Existing Waterfront Trail



Features and Benefits

Trail Expansion & Widening:

- 2.4 m wide multi-use trail for increased use by pedestrians, cyclists and commuters
- Gravel surface for durability and dust suppression

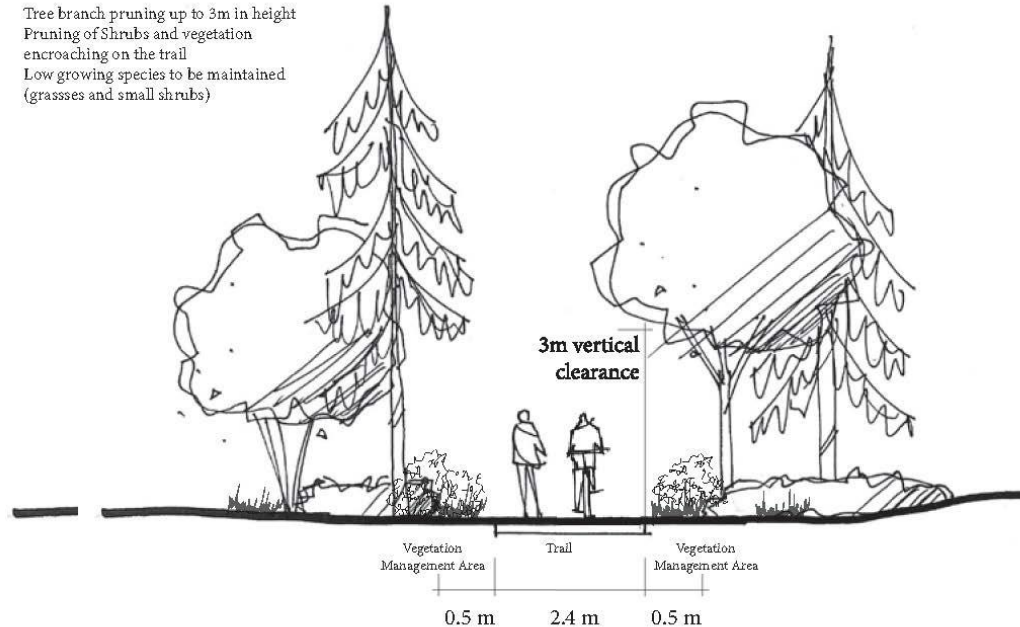
Widened Wooden Bridges & Boardwalks:

- Provide riparian and aquatic ecosystem protection
- Increased erosion prevention
- Safely facilitate increased use by pedestrians, cyclists and commuters

Proposed Multi-Use Trail

Vegetation Management Area

- Tree branch pruning up to 3m in height
- Pruning of Shrubs and vegetation encroaching on the trail
- Low growing species to be maintained (grasses and small shrubs)



Kalamoior Regional Park Multi-Use Trail Concept

Legend

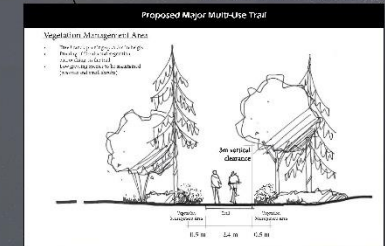
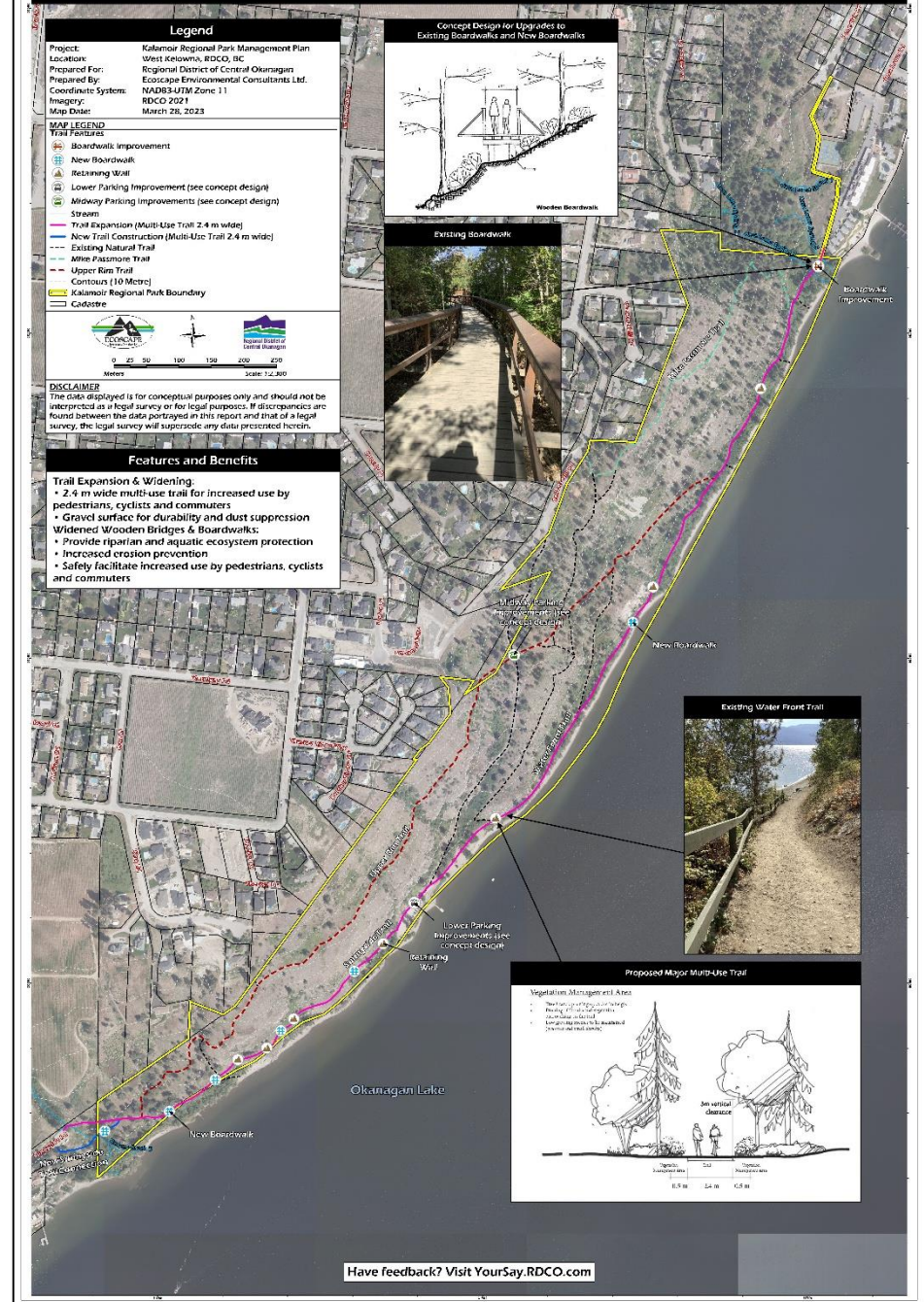
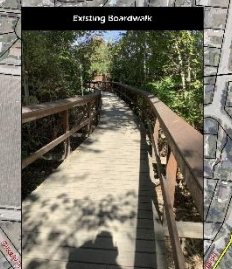
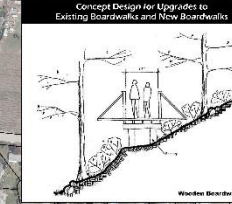
Project: Kalamoior Regional Park Management Plan
 Location: West Kelowna, BC
 Prepared For: Regional District of Central Okanagan
 Prepared By: Ecovaga Environmental Consultants Ltd.
 Coordinate System: NAD83-UTM Zone 11
 Imagery: RDCC 2021
 Map Date: March 28, 2023

- MAP LEGEND**
- Trail Features**
- Boardwalk Improvement
 - New Boardwalk
 - Retaining Wall
 - Lower Parking Improvement (see concept design)
 - Midway Parking Improvements (see concept design)
 - Stream
 - Trail Expansion (Multi-Use Trail 2.4 m wide)
 - New Trail Construction (Multi-Use Trail 2.4 m wide)
 - Existing Natural Trail
 - Mike Passmore Trail
 - Upper Rim Trail
 - Contours (10 Metres)
 - Kalamoior Regional Park Boundary
 - Cadastre

DISCLAIMER
 The data displayed is for conceptual purposes only and should not be interpreted as a legal survey or for legal purposes. If discrepancies are found between the data portrayed in this report and that of a legal survey, the legal survey will supersede any data presented herein.

Features and Benefits

- Trail Expansion & Widening:**
- 2.4 m wide multi-use trail for increased use by pedestrians, cyclists and commuters
 - Gravel surface for durability and dust suppression
- Widened Wooden Bridges & Boardwalks:**
- Provide riparian and aquatic ecosystem protection
 - Increased erosion prevention
 - Safely facilitate increased use by pedestrians, cyclists and commuters



Have feedback? Visit YourSay.RDCC.com

Public Engagement – Phase 2

- What do you like most about the three concepts?
- What do you like least about the three concepts?
- Other comments



Public Engagement – Phase 2

Feedback – Lower Parking Concept

- Most people liked the design
- Improved accessibility was seen as a positive
- Safety concerns regarding the trail crossing the parking lot
- Mixed feelings on turnaround

Feedback – Midway Parking Concept

- Most people liked the design
- Parking for access to the upper trails
- Makes use of flat, disturbed ground
- Loss of a viewpoint





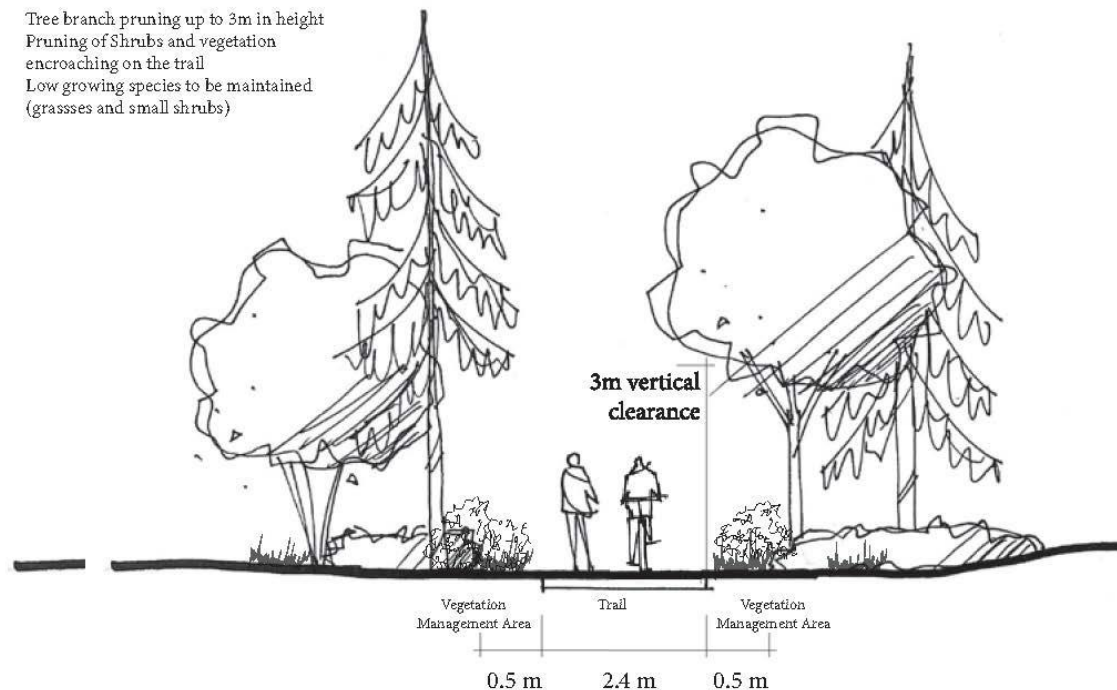
Public Engagement – Phase 2

Feedback – trail widening

Proposed Multi-Use Trail

Vegetation Management Area

- Tree branch pruning up to 3m in height
- Pruning of Shrubs and vegetation encroaching on the trail
- Low growing species to be maintained (grasses and small shrubs)



- Mixed support for trail widening
- Concerns that a wider trail will lead to more bikes, higher speeds, greater user conflict
- A wider trail, is a safer trail
- Concerns with how trail widening will impact the environment



Other Comments

- Need for improved parking at trailheads outside of the park
- Bikes should be prohibited from upper trails
- E-bikes should not be allowed
- Need for more control of off leash dogs
- Need for additional park land in West Kelowna

Management Goals & Recommendations

Environment and Conservation

Maintain and protect ecosystems, critical habitat, and wildlife, including species at-risk, from degradation and disturbance

- Action OPM-04: Wildfire mitigation – Treatment for the invasive Tree of Heaven
- Action OPM-01: Trail maintenance and repair to avoid critical habitat or BC Red-listed riparian communities
- Action CAP-02: Sunnyside Trail Improvements – utilize boardwalks to prevent trail impacts on sensitive steep slopes and ephemeral gullies

Climate Adaptability and Resiliency

Minimize greenhouse gas emissions and increase carbon sequestration

- Action CAP-01: Lower Parking Improvements – including ecosystem restoration and planting of native trees and shrubs
- Action CAP-02: Sunnyside Trail Improvements - widen trail to safely promote low-carbon transit opportunities (i.e., cycling)
- Action CAP-03: Waterfront Trail Improvements - widen trail to safely promote low-carbon transit opportunities (i.e., cycling)

Recreation & Access

Accommodate and provide amenities for park users of all abilities

- Action CAP-01: Provide paved parking lot and parking stalls for improved accessibility to the floating dock and beach
- Action CAP-01: Improve access to the beach area and lake by installing mobility mats
- Action OPM-01: Monitor trail conditions and park amenities for wear and tear and need for increased maintenance due to higher usage

Operational Safety & Security

Facilitate a safe visitor experience and minimize potential conflicts among user groups

- Action CAP-10: Educate park users on trail etiquette and develop signage on trail code of conduct for shared use
- Action CAP-01: Improve the lower parking lot to ensure safe park access

Stewardship & Partnerships

Incorporate First Nation's culture and heritage in the Park and support existing partnerships with external organizations

- Action OMP-03: Work with WFN on incorporating traditional ecological knowledge and practices into Park initiatives
- Action OMP-06: Engage volunteers to support and advance environmental stewardship initiatives

Implementation Plan – Capital Items

Action Item	Division	Action	Short Term (Year 1-5)	Short-Medium Term (Year 6-10)	Medium-Long Term (Year 11-15)	Long Term (Year 16-20)	Total (Year 1-20)
Capital Costs							
CAP-01	PPC	Lower parking area improvements	\$620,000				\$620,000
CAP-02	PPC	Sunnyside Trail improvements - multi-use trail upgrades to 2.4 m wide	\$710,000				\$710,000
CAP-03	PPC	Waterfront Trail improvements multi-use trail upgrades to 2.4 m wide	\$500,000				\$500,000
CAP-04	PPC	Casa Loma boardwalk upgrades - 2.4m wide	\$100,000				\$100,000
CAP-05	PPC	Collens Hill Road parking area - construct new small 9 car stall parking area			\$180,000		\$180,000
CAP-06	PPC	Collens Hill Road parking area - Construct Washroom.			\$50,000		\$50,000
CAP-07	PPC	Washroom replacement – remove and replace existing washrooms		\$60,000			\$60,000
CAP-08	PPC	Upper rim trail improvements - repairs, safety guardrails, etc.		\$240,000			\$240,000
CAP-09	PPC	Park entrance sign - replace entrance sign at access points	\$20,000			\$25,000	\$45,000
CAP-10	PPC	Park signs - review and update wayfinding and interpretation signage	\$10,000	\$10,000	\$10,000	\$10,000	\$40,000
CAP-11	PPC	Collens Hill Road - repave park access road			\$400,000		\$400,000
CAP-12	PPC	Park asset renewal - as per regional parks asset management program					
CAP-13	PPC, PRO	Park management plan review – review every 5 years and update at year 20				\$40,000	\$40,000
Subtotal			\$1,960,000	\$310,000	\$640,000	\$75,000	\$2,985,000

Implementation Plan – Operational Items

Action Item	Division	Action	Short Term (Year 1-5)	Short-Medium Term (Year 6-10)	Medium-Long Term (Year 11-15)	Long Term (Year 16-20)	Total (Year 1-20)
Operational Costs							
OPM-01	PRO	Trail maintenance and repairs	\$7,500	\$7,500	\$7,500	\$7,500	\$30,000
OPM-02	PPC	Pavement condition assessment for Collens Hill Road		\$20,000			\$20,000
OPM-03	PRO	Wildfire mitigation - prescriptions & fuel management treatment, as per RDCO Parks CWPP & CWRP		\$75,000			\$75,000
OPM-04	PRO	Wildfire mitigation - treatment for Tree of Heaven	\$10,000				\$10,000
OPM-05	PRO, PVS	Work with Friends of Kalamoior & volunteers on fuel management clean up events	\$5,000	\$5,000	\$5,000	\$5,000	\$20,000
OPM_06	PRO, PVS	Work with Friends of Kalamoior & volunteers on invasive weeds removal events	\$5,000	\$5,000	\$5,000	\$5,000	\$20,000
OPM-07	PRO	Install swim grid, logs, buoys and signage for swim areas	\$25,000	\$25,000	\$25,000	\$25,000	\$100,000
OPM-08	PRO	Contract services - washroom maintenance	\$58,000	\$60,000	\$63,000	\$66,000	\$247,000
Subtotal			\$110,500	\$197,500	\$105,500	\$108,500	\$522,000

Implementation Plan Costing Summary

20 Year Full Implementation Capital and Operational Estimated Costs	Total Cost
▪ 20 Year Implementation Plan Capital Costs = \$2,985,000	\$3,507,000
▪ 20 Year Implementation Plan Operational Costs = \$522,000	

Conclusion:

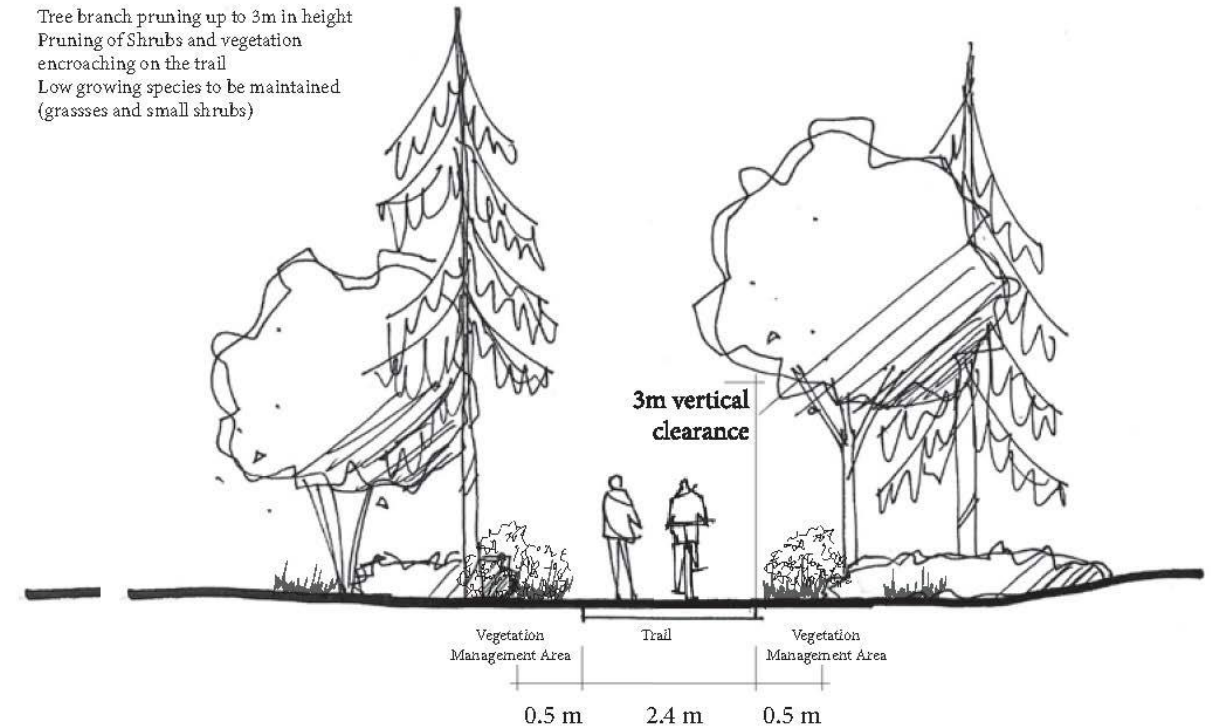
Correcting the Information:

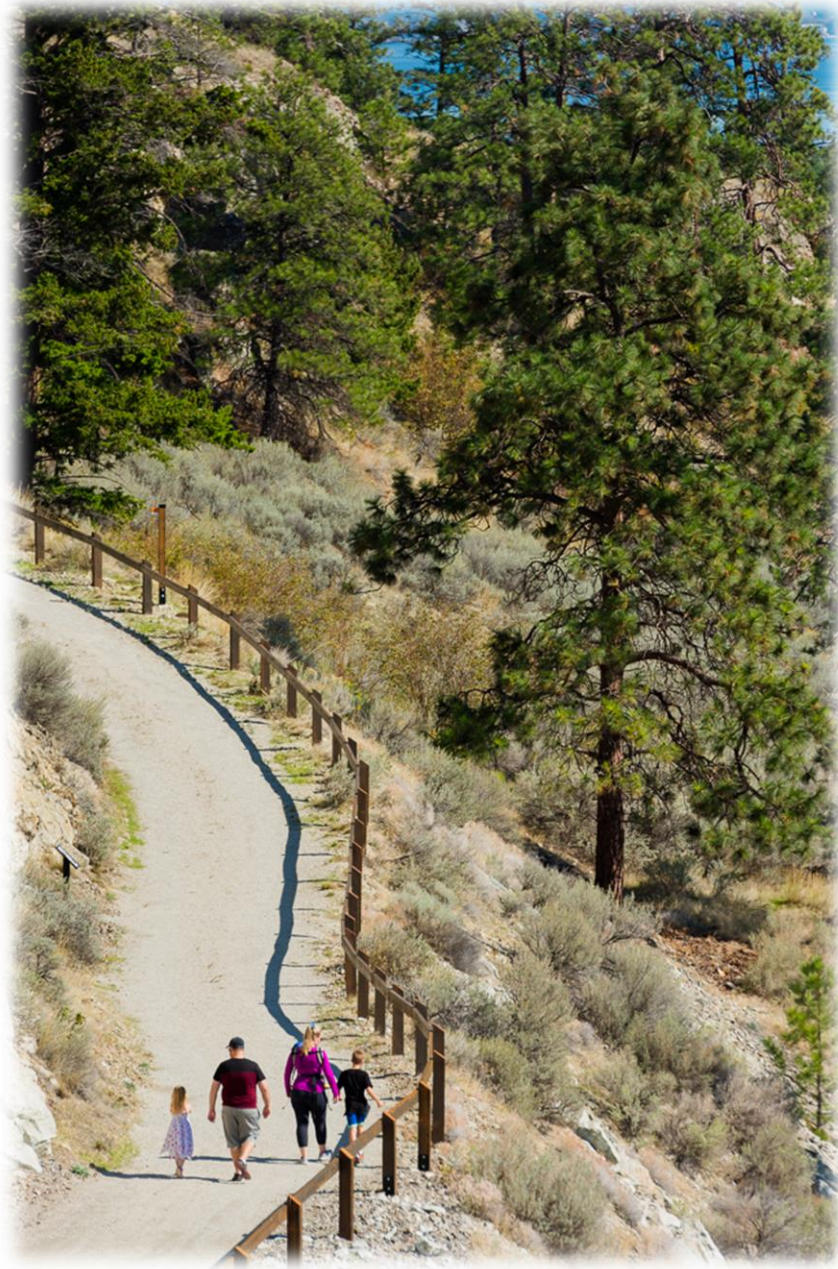
- Trail Width
 - 2.4m wide
 - 0.5m wide vegetation management area
- Boardwalk Width
 - 2.4m wide
- Conservation Values
 - Conservation key importance
 - Balance conservation with recreation
- Project Cost
 - \$1.8 million (Trails and Parking)
 - Seeking external funding
- Equipment Types
 - Only use right sized equipment
 - Specialized trail equipment and hand work
- Remaining Unbiased
 - Do not favor one group over another
 - Finding a balance beneficial to all

4.2.2 Type 2: Multi-Use

Vegetation Management Area

- Tree branch pruning up to 3m in height
- Pruning of Shrubs and vegetation encroaching on the trail
- Low growing species to be maintained (grasses and small shrubs)





Conclusion:

Plan Benefits Moving Forward:

- Improved parking area & access
- Improved accessibility
- Supports healthy living
- Trail Connections
- Protection of conservation values
- Increased park user safety
- Improved signage
- Addressing invasive species
- Build partnerships with sylix communities & community groups
- Support volunteer activities

Conclusion:

Recommendation & Options:

- Recommendation
 - Approve the Management Plan as presented
 - Waterfront Trail to a maximum 2.4m width
 - Sunnyside Trail to a maximum 2.4m width
- Alternate Recommendation #1
 - Approve the Management Plan with Amendment
 - Waterfront Trail to maximum 2.4m width
 - Sunnyside Trail, maintain width, include safety improvements
- Alternate Recommendation #2
 - Approve the Management Plan with Amendment
 - Waterfront Trail, maintain width, include safety improvements
 - Sunnyside Trail, maintain width, include safety improvements



Recommendation

All Directors – Unweighted Corporate Vote – Majority (LGA s.208)

THAT the Regional Board approve the Kalamoior Regional Park Management Plan in the form attached to the Report of the Manager – Parks Capital Planning & Asset Management dated April 3, 2025;

AND THAT the Regional Board supports the Kalamoior Regional Park Management Plan's implementation plan to upgrade the Waterfront Trail and Sunnyside Trail up to a 2.4m wide multi-use standard which is consistent with the previously approved master trail and transportation plans, Okanagan Trail 2000 project, 2005 Kalamoior Regional Park Management Plan, 2011 Regional Active Transportation Master Plan, 2020 Regional Bicycling and Trails Master Plan, and the 2020 Regional Transportation Plan.



Thank you