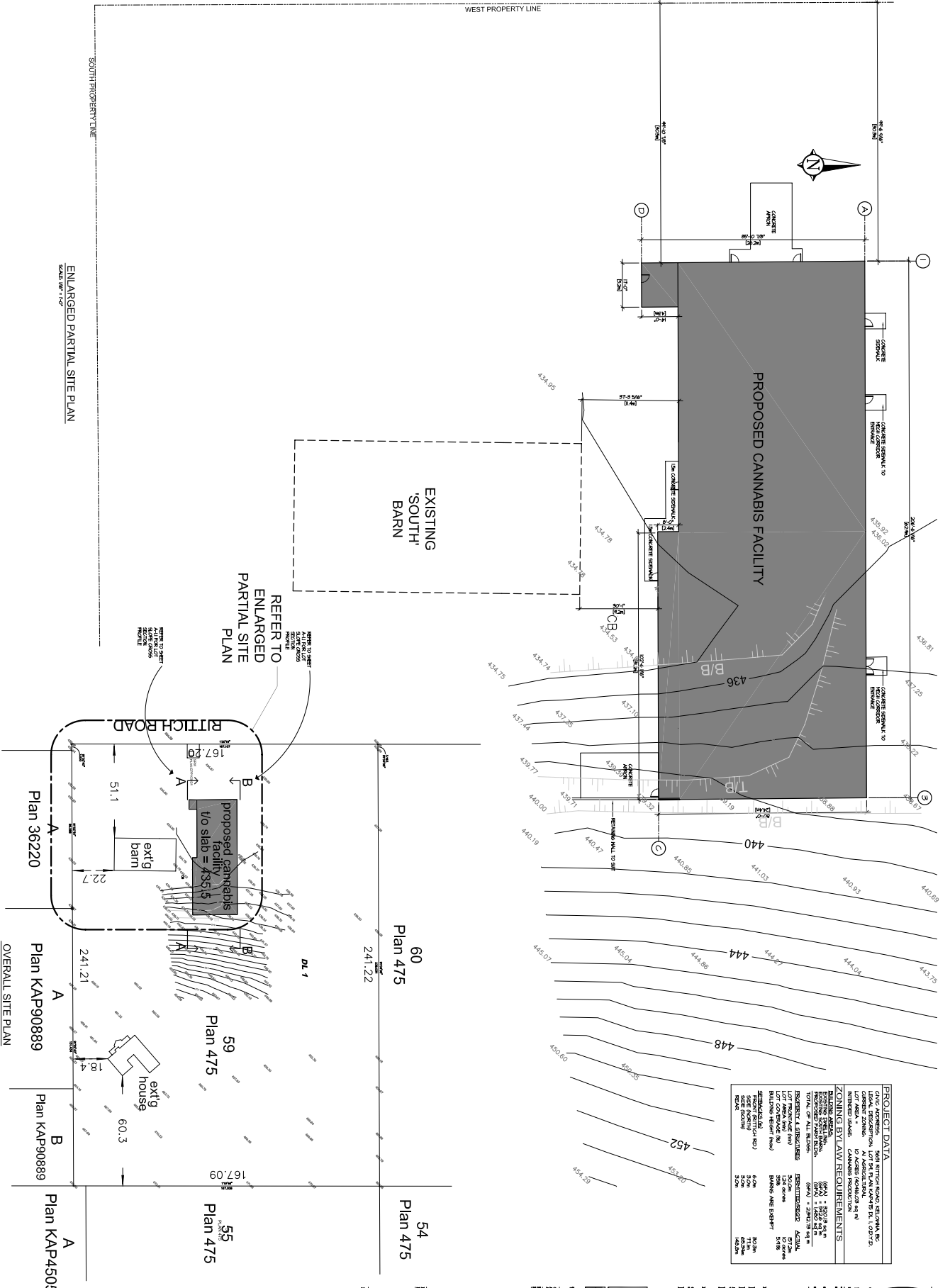


RITTICH ROAD

CAD VERSION: 2020
 FILE LOCATION: R:\PROJECTS\2020\2020-0044\2020-0044.dwg
 FILE NAME: 2020-0044.dwg
 REVISION DATE: 2020-08-11
 EDITED BY: [Redacted]



PROJECT DATA	
CIVIC ADDRESS:	5631 RITTICH ROAD, KELOWNA, BC
LEGAL ADDRESS:	10 ACRES (404,628 sq ft)
CURRENT ZONING:	A1 - AGRICULTURAL
PROPOSED ZONING:	COMMERCIAL
ZONING BYLAW REQUIREMENTS	
MINIMUM LOT AREA:	10,000 sq ft
MINIMUM LOT WIDTH:	30.0m
MINIMUM LOT DEPTH:	30.0m
MINIMUM SETBACKS:	3.0m
MINIMUM FRONT SETBACK:	3.0m
MINIMUM SIDE SETBACK:	3.0m
MINIMUM REAR SETBACK:	3.0m
MINIMUM FRONT YARD SETBACK:	3.0m
MINIMUM SIDE YARD SETBACK:	3.0m
MINIMUM REAR YARD SETBACK:	3.0m
MINIMUM FRONT SETBACK (FOR ALL BUILDINGS):	3.0m
MINIMUM SIDE SETBACK (FOR ALL BUILDINGS):	3.0m
MINIMUM REAR SETBACK (FOR ALL BUILDINGS):	3.0m
MINIMUM FRONT SETBACK (FOR ALL BUILDINGS):	3.0m
MINIMUM SIDE SETBACK (FOR ALL BUILDINGS):	3.0m
MINIMUM REAR SETBACK (FOR ALL BUILDINGS):	3.0m

CORNERSTONE
 CONTRACT SERVICES

PROPOSED CANNABIS PRODUCTION BLDG
 5631 RITTICH ROAD
 KELOWNA, BC

PREPARED BY:
 BRYAN HAYDEN

PROPOSED CANNABIS PRODUCTION BLDG
 5631 RITTICH ROAD
 KELOWNA, BC

PREPARED BY:
 BRYAN HAYDEN

PROPOSED CANNABIS PRODUCTION BLDG
 5631 RITTICH ROAD
 KELOWNA, BC

PREPARED BY:
 BRYAN HAYDEN

PROPOSED CANNABIS PRODUCTION BLDG
 5631 RITTICH ROAD
 KELOWNA, BC

PREPARED BY:
 BRYAN HAYDEN

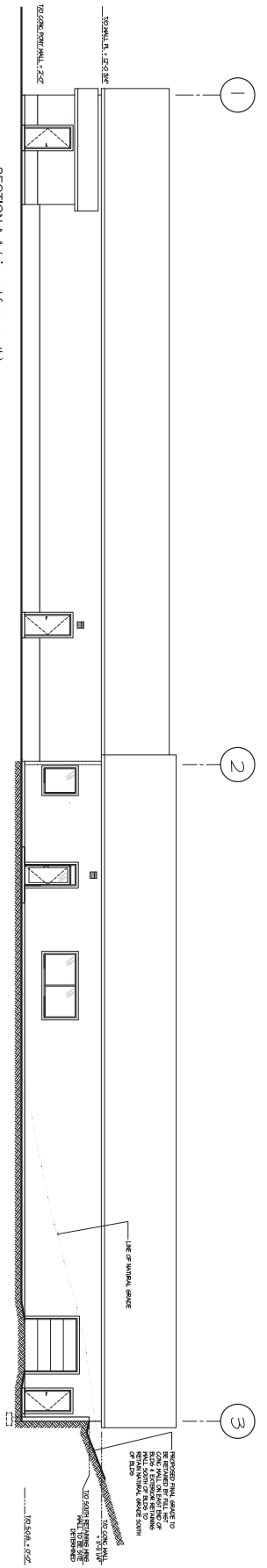
PROPOSED CANNABIS PRODUCTION BLDG
 5631 RITTICH ROAD
 KELOWNA, BC

PREPARED BY:
 BRYAN HAYDEN

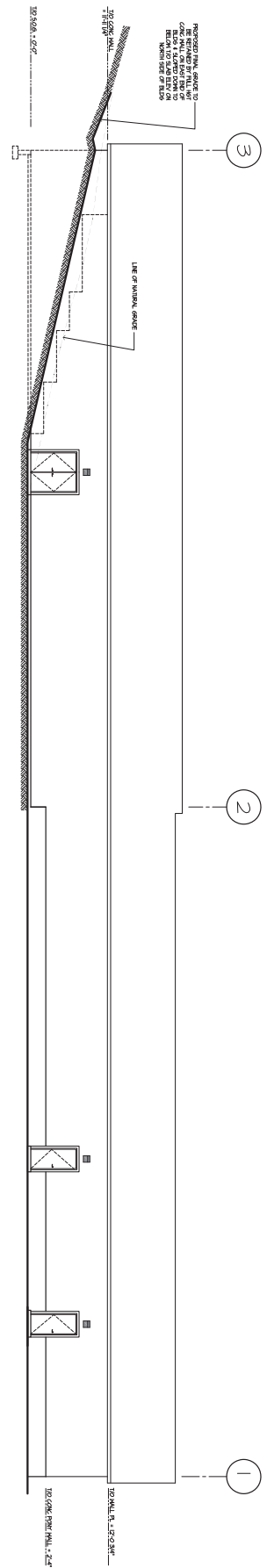
ENLARGED PARTIAL SITE PLAN
 SCALE: 1/8" = 1'-0"

OVERALL SITE PLAN
 SCALE: 1/8" = 1'-0"

REFER TO ENLARGED PARTIAL SITE PLAN FOR DIMENSIONS AND NOTES



SECTION A-A (Viewed from south)
SCALE: 1/8" = 1'-0"



SECTION B-B (Viewed from north)
SCALE: 1/8" = 1'-0"

10150 160th Avenue, Richmond, BC V6V 2G9
Tel: 604-277-0888
Fax: 604-277-0889
www.cornerstonecontractservices.com

PROJECT NAME:
**PROPOSED CANNANERS
PRODUCTION BLDG**
5631 RITTICH ROAD
KELOWNA, BC

DRAWING TITLE:
**SITE PROFILE
CROSS SECTIONS**

NO.	DATE	DESCRIPTION

PROJECT NO.: 2020-0044

DATE:
BY:
CHECKED:
DATE:
BY:
DATE:

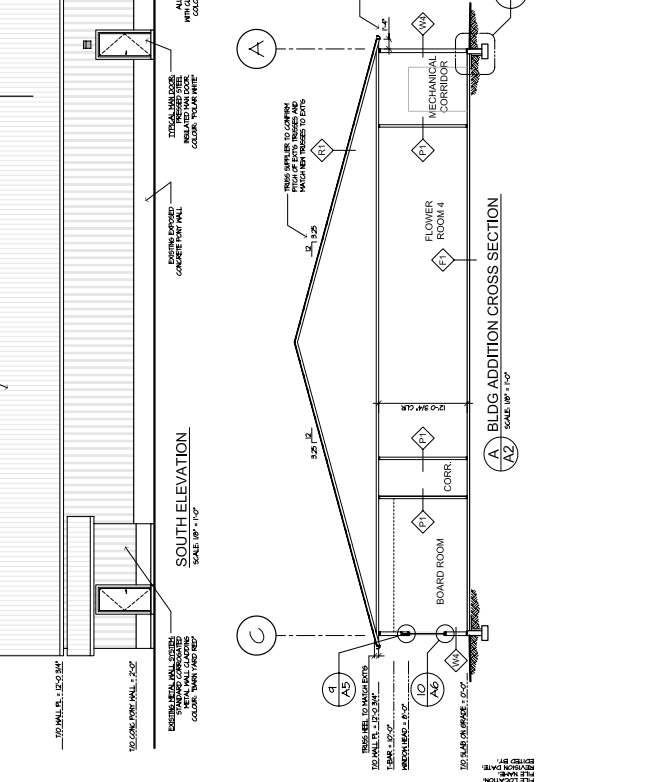
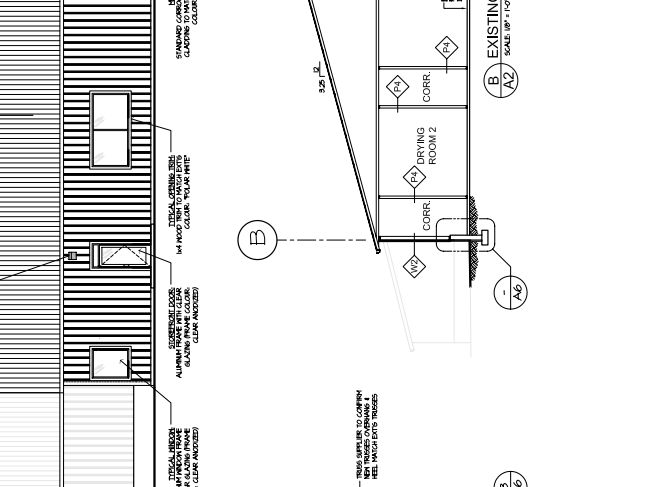
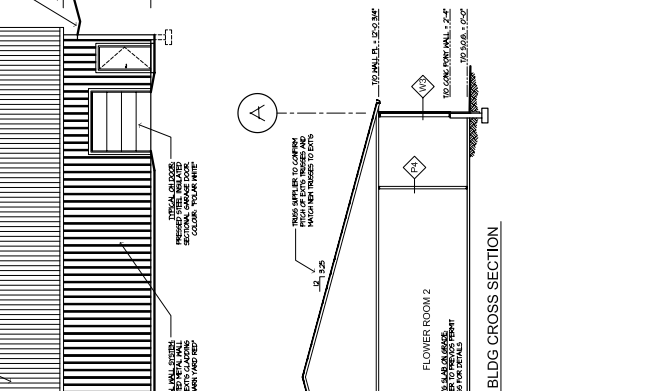
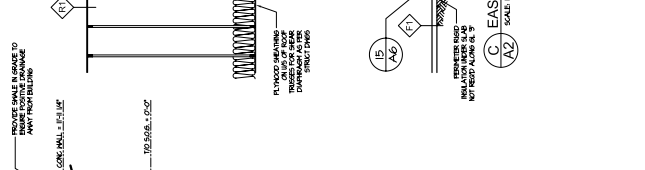
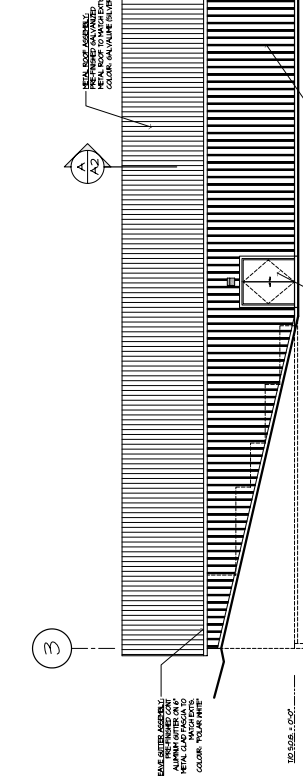
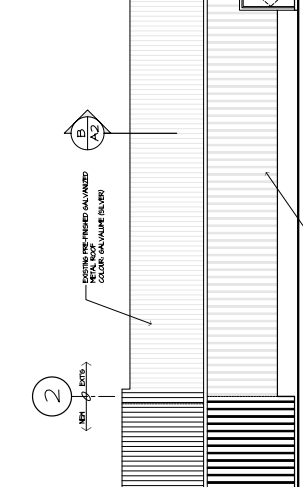
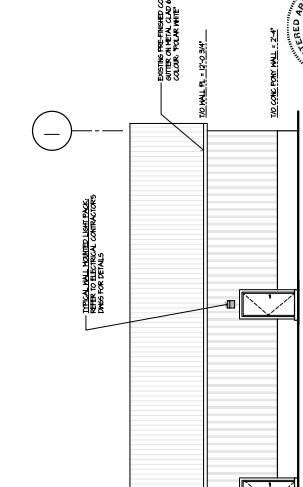
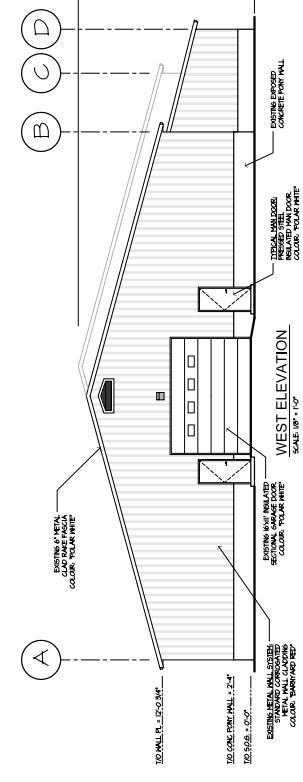
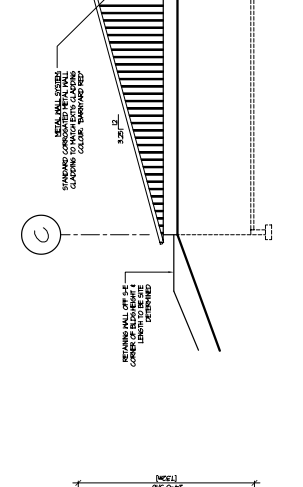
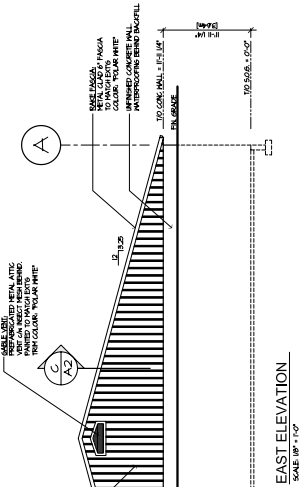
DATE:
BY:
DATE:

DATE:
BY:
DATE:

DATE	DESCRIPTION
2024.01.15	ISSUE FOR PERMIT
2024.01.15	ISSUE FOR PERMIT
2024.01.15	ISSUE FOR PERMIT
2024.01.15	ISSUE FOR PERMIT
2024.01.15	ISSUE FOR PERMIT

PROJECT NO. - 200454

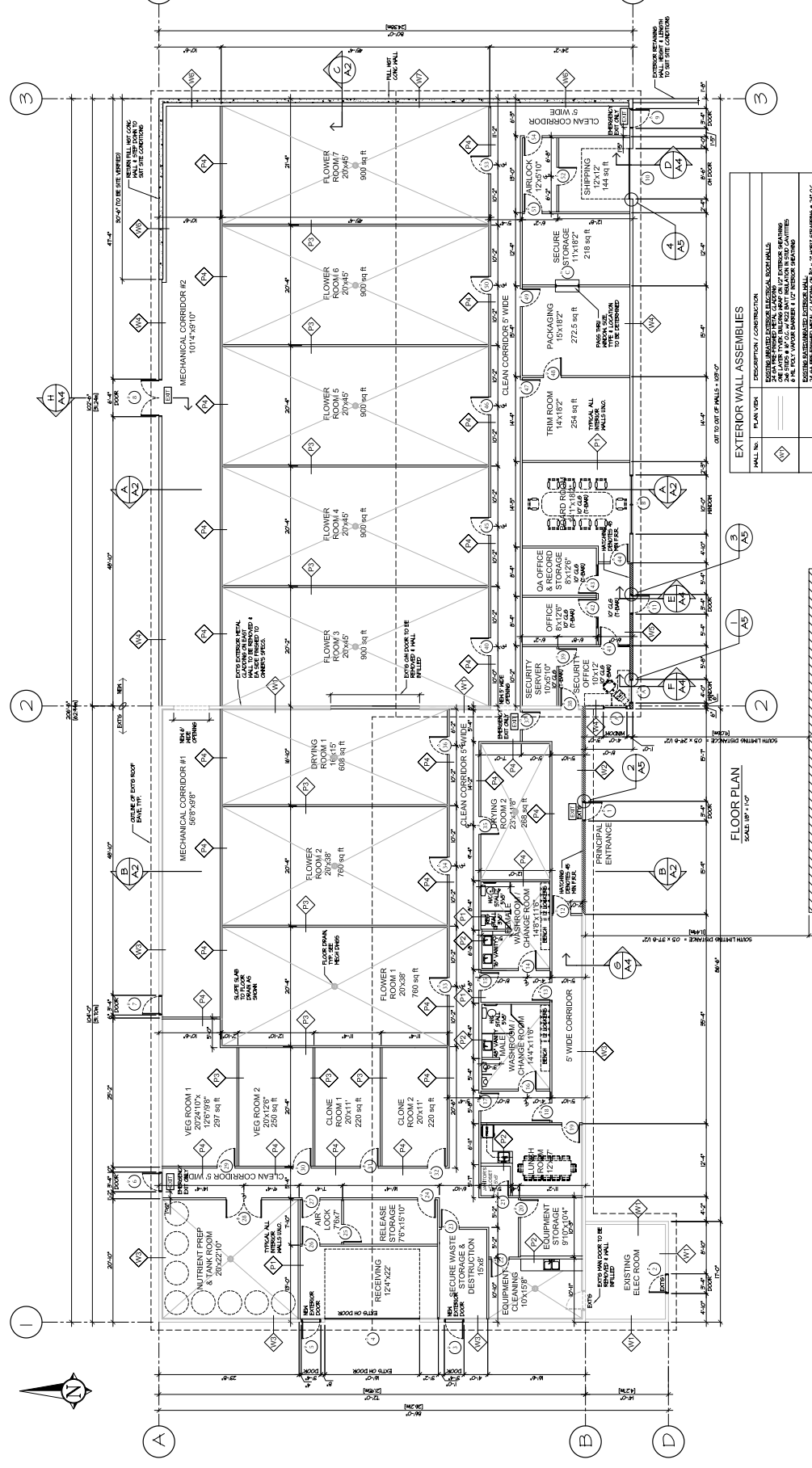
NO.	REVISION	DATE
1	ISSUE FOR PERMIT	2024.01.15
2	ISSUE FOR PERMIT	2024.01.15
3	ISSUE FOR PERMIT	2024.01.15
4	ISSUE FOR PERMIT	2024.01.15



REVISION NUMBER	DATE	DESCRIPTION
A-3		

PROJECT NO.	2007654
DATE	
BY	
CHECKED BY	
DATE	

REVISION	DATE	DESCRIPTION
1	10/20/20	ISSUED FOR PERMIT
2	10/20/20	ISSUED FOR PERMIT
3	10/20/20	ISSUED FOR PERMIT
4	10/20/20	ISSUED FOR PERMIT
5	10/20/20	ISSUED FOR PERMIT
6	10/20/20	ISSUED FOR PERMIT
7	10/20/20	ISSUED FOR PERMIT
8	10/20/20	ISSUED FOR PERMIT
9	10/20/20	ISSUED FOR PERMIT
10	10/20/20	ISSUED FOR PERMIT



ROOF ASSEMBLIES	DESCRIPTION / CONSTRUCTION
1	MEANS TO BE DETERMINED
2	MEANS TO BE DETERMINED
3	MEANS TO BE DETERMINED
4	MEANS TO BE DETERMINED
5	MEANS TO BE DETERMINED
6	MEANS TO BE DETERMINED
7	MEANS TO BE DETERMINED
8	MEANS TO BE DETERMINED
9	MEANS TO BE DETERMINED
10	MEANS TO BE DETERMINED

EXTERIOR WALL ASSEMBLIES	DESCRIPTION / CONSTRUCTION
1	EXTERIOR WALL ASSEMBLY
2	EXTERIOR WALL ASSEMBLY
3	EXTERIOR WALL ASSEMBLY
4	EXTERIOR WALL ASSEMBLY
5	EXTERIOR WALL ASSEMBLY
6	EXTERIOR WALL ASSEMBLY
7	EXTERIOR WALL ASSEMBLY
8	EXTERIOR WALL ASSEMBLY
9	EXTERIOR WALL ASSEMBLY
10	EXTERIOR WALL ASSEMBLY

INTERIOR WALL ASSEMBLIES	DESCRIPTION / CONSTRUCTION
1	INTERIOR WALL ASSEMBLY
2	INTERIOR WALL ASSEMBLY
3	INTERIOR WALL ASSEMBLY
4	INTERIOR WALL ASSEMBLY
5	INTERIOR WALL ASSEMBLY
6	INTERIOR WALL ASSEMBLY
7	INTERIOR WALL ASSEMBLY
8	INTERIOR WALL ASSEMBLY
9	INTERIOR WALL ASSEMBLY
10	INTERIOR WALL ASSEMBLY

ROOF ASSEMBLIES	DESCRIPTION / CONSTRUCTION
1	MEANS TO BE DETERMINED
2	MEANS TO BE DETERMINED
3	MEANS TO BE DETERMINED
4	MEANS TO BE DETERMINED
5	MEANS TO BE DETERMINED
6	MEANS TO BE DETERMINED
7	MEANS TO BE DETERMINED
8	MEANS TO BE DETERMINED
9	MEANS TO BE DETERMINED
10	MEANS TO BE DETERMINED

EXTERIOR WALL ASSEMBLIES	DESCRIPTION / CONSTRUCTION
1	EXTERIOR WALL ASSEMBLY
2	EXTERIOR WALL ASSEMBLY
3	EXTERIOR WALL ASSEMBLY
4	EXTERIOR WALL ASSEMBLY
5	EXTERIOR WALL ASSEMBLY
6	EXTERIOR WALL ASSEMBLY
7	EXTERIOR WALL ASSEMBLY
8	EXTERIOR WALL ASSEMBLY
9	EXTERIOR WALL ASSEMBLY
10	EXTERIOR WALL ASSEMBLY

INTERIOR WALL ASSEMBLIES	DESCRIPTION / CONSTRUCTION
1	INTERIOR WALL ASSEMBLY
2	INTERIOR WALL ASSEMBLY
3	INTERIOR WALL ASSEMBLY
4	INTERIOR WALL ASSEMBLY
5	INTERIOR WALL ASSEMBLY
6	INTERIOR WALL ASSEMBLY
7	INTERIOR WALL ASSEMBLY
8	INTERIOR WALL ASSEMBLY
9	INTERIOR WALL ASSEMBLY
10	INTERIOR WALL ASSEMBLY

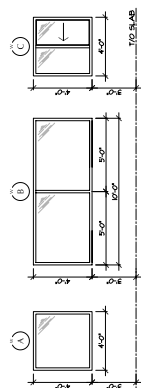
ROOF ASSEMBLIES	DESCRIPTION / CONSTRUCTION
1	MEANS TO BE DETERMINED
2	MEANS TO BE DETERMINED
3	MEANS TO BE DETERMINED
4	MEANS TO BE DETERMINED
5	MEANS TO BE DETERMINED
6	MEANS TO BE DETERMINED
7	MEANS TO BE DETERMINED
8	MEANS TO BE DETERMINED
9	MEANS TO BE DETERMINED
10	MEANS TO BE DETERMINED

EXTERIOR WALL ASSEMBLIES	DESCRIPTION / CONSTRUCTION
1	EXTERIOR WALL ASSEMBLY
2	EXTERIOR WALL ASSEMBLY
3	EXTERIOR WALL ASSEMBLY
4	EXTERIOR WALL ASSEMBLY
5	EXTERIOR WALL ASSEMBLY
6	EXTERIOR WALL ASSEMBLY
7	EXTERIOR WALL ASSEMBLY
8	EXTERIOR WALL ASSEMBLY
9	EXTERIOR WALL ASSEMBLY
10	EXTERIOR WALL ASSEMBLY

INTERIOR WALL ASSEMBLIES	DESCRIPTION / CONSTRUCTION
1	INTERIOR WALL ASSEMBLY
2	INTERIOR WALL ASSEMBLY
3	INTERIOR WALL ASSEMBLY
4	INTERIOR WALL ASSEMBLY
5	INTERIOR WALL ASSEMBLY
6	INTERIOR WALL ASSEMBLY
7	INTERIOR WALL ASSEMBLY
8	INTERIOR WALL ASSEMBLY
9	INTERIOR WALL ASSEMBLY
10	INTERIOR WALL ASSEMBLY



FINISH	SIZE	WINDOW SCHEDULE				FINISH
		GLAZING	FRAME	INSURANCE	GLAZING	
①	TYPE 1	CLEAR UNPAVED GLASS	ALUMINUM	INSURANCE	CLEAR ANODIZED	
②	TYPE 2	CLEAR UNPAVED GLASS	ALUMINUM	INSURANCE	CLEAR ANODIZED	
③	TYPE 3	CLEAR UNPAVED GLASS	ALUMINUM	INSURANCE	CLEAR ANODIZED	
④	TYPE 4	CLEAR UNPAVED GLASS	ALUMINUM	INSURANCE	CLEAR ANODIZED	
⑤	TYPE 5	CLEAR UNPAVED GLASS	ALUMINUM	INSURANCE	CLEAR ANODIZED	
⑥	TYPE 6	CLEAR UNPAVED GLASS	ALUMINUM	INSURANCE	CLEAR ANODIZED	

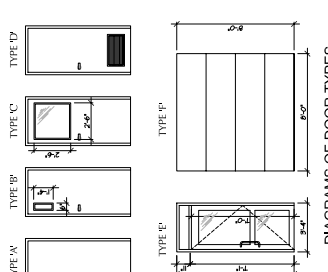


WINDOW DIAGRAMS

WINDOW NOTES

1. ALL BUILDING INDUSTRIES TO BE BUILDING SPECIFICATIONS TO OTHERS SPECIFICATIONS.
2. ALL BUILDING INDUSTRIES TO BE BUILDING SPECIFICATIONS TO OTHERS SPECIFICATIONS.
3. ALL BUILDING INDUSTRIES TO BE BUILDING SPECIFICATIONS TO OTHERS SPECIFICATIONS.
4. ALL BUILDING INDUSTRIES TO BE BUILDING SPECIFICATIONS TO OTHERS SPECIFICATIONS.
5. MATERIALS TO BE PROVIDED BY OTHERS SPECIFICATIONS TO OTHERS SPECIFICATIONS.
6. PROVIDE HANGERS OF SILL PLACING AT THE SILL OF ALL WINDOWS.
7. DOOR HANGERS TO BE SILL PLACING AT THE SILL OF ALL WINDOWS.
8. SILL PLACING TO BE SILL PLACING AT THE SILL OF ALL WINDOWS.
9. SILL PLACING TO BE SILL PLACING AT THE SILL OF ALL WINDOWS.
10. SILL PLACING TO BE SILL PLACING AT THE SILL OF ALL WINDOWS.

NO.	TYPE	SIZE	DESCRIPTION	HIGHLIGHT		NOTES	LOCATION/ROOM
				SHAPE	FINISH		
01	A	1'-0" x 1'-0"	STEEL DOOR			REVISIONS: PRODUCTION (2023)	
02	A	1'-0" x 1'-0"	STEEL DOOR				
03	A	1'-0" x 1'-0"	STEEL DOOR				
04	F	1'-0" x 1'-0"	STEEL DOOR				
05	A	1'-0" x 1'-0"	STEEL DOOR				
06	F	1'-0" x 1'-0"	STEEL DOOR				
07	A	1'-0" x 1'-0"	STEEL DOOR				
08	F	1'-0" x 1'-0"	STEEL DOOR				
09	A	1'-0" x 1'-0"	STEEL DOOR				
10	F	1'-0" x 1'-0"	STEEL DOOR				
11	A	1'-0" x 1'-0"	STEEL DOOR				
12	F	1'-0" x 1'-0"	STEEL DOOR				
13	A	1'-0" x 1'-0"	STEEL DOOR				
14	F	1'-0" x 1'-0"	STEEL DOOR				
15	A	1'-0" x 1'-0"	STEEL DOOR				
16	F	1'-0" x 1'-0"	STEEL DOOR				
17	A	1'-0" x 1'-0"	STEEL DOOR				
18	F	1'-0" x 1'-0"	STEEL DOOR				
19	A	1'-0" x 1'-0"	STEEL DOOR				
20	F	1'-0" x 1'-0"	STEEL DOOR				
21	A	1'-0" x 1'-0"	STEEL DOOR				
22	F	1'-0" x 1'-0"	STEEL DOOR				
23	A	1'-0" x 1'-0"	STEEL DOOR				
24	F	1'-0" x 1'-0"	STEEL DOOR				
25	A	1'-0" x 1'-0"	STEEL DOOR				
26	F	1'-0" x 1'-0"	STEEL DOOR				
27	A	1'-0" x 1'-0"	STEEL DOOR				
28	F	1'-0" x 1'-0"	STEEL DOOR				
29	A	1'-0" x 1'-0"	STEEL DOOR				
30	F	1'-0" x 1'-0"	STEEL DOOR				
31	A	1'-0" x 1'-0"	STEEL DOOR				
32	F	1'-0" x 1'-0"	STEEL DOOR				
33	A	1'-0" x 1'-0"	STEEL DOOR				
34	F	1'-0" x 1'-0"	STEEL DOOR				
35	A	1'-0" x 1'-0"	STEEL DOOR				
36	F	1'-0" x 1'-0"	STEEL DOOR				
37	A	1'-0" x 1'-0"	STEEL DOOR				
38	F	1'-0" x 1'-0"	STEEL DOOR				
39	A	1'-0" x 1'-0"	STEEL DOOR				
40	F	1'-0" x 1'-0"	STEEL DOOR				
41	A	1'-0" x 1'-0"	STEEL DOOR				
42	F	1'-0" x 1'-0"	STEEL DOOR				
43	A	1'-0" x 1'-0"	STEEL DOOR				
44	F	1'-0" x 1'-0"	STEEL DOOR				
45	A	1'-0" x 1'-0"	STEEL DOOR				
46	F	1'-0" x 1'-0"	STEEL DOOR				
47	A	1'-0" x 1'-0"	STEEL DOOR				
48	F	1'-0" x 1'-0"	STEEL DOOR				
49	A	1'-0" x 1'-0"	STEEL DOOR				
50	F	1'-0" x 1'-0"	STEEL DOOR				



DIAGRAMS OF DOOR TYPES

6. OVERHEAD DOORS
- 2 1/2" GALVANIZED STEEL EXTERIOR FINISH
 - 1 1/2" GALVANIZED STEEL INTERIOR FINISH
 - VERTICAL LIFT OR LIFT WHERE NO ROOM FOR VERT.
 - 1 1/2" GALVANIZED STEEL EXTERIOR FINISH
 - 1 1/2" GALVANIZED STEEL INTERIOR FINISH
 - HANGER STRINGS AT HEAD TO BE METRICALLY MOUNTED
 - HANGERS TO BE METRICALLY MOUNTED
 - HANGERS TO BE METRICALLY MOUNTED
 - HANGERS TO BE METRICALLY MOUNTED
7. TYPE D
- PRODUCT TYPE TO BE METRICALLY MOUNTED AS PER ASSEMBLY VALUE OF 200-454
 - HANGERS TO BE METRICALLY MOUNTED
 - HANGERS TO BE METRICALLY MOUNTED
 - HANGERS TO BE METRICALLY MOUNTED
8. TYPE E
- PRODUCT TYPE TO BE METRICALLY MOUNTED AS PER ASSEMBLY VALUE OF 200-454
 - HANGERS TO BE METRICALLY MOUNTED
 - HANGERS TO BE METRICALLY MOUNTED
 - HANGERS TO BE METRICALLY MOUNTED
9. TYPE F
- PRODUCT TYPE TO BE METRICALLY MOUNTED AS PER ASSEMBLY VALUE OF 200-454
 - HANGERS TO BE METRICALLY MOUNTED
 - HANGERS TO BE METRICALLY MOUNTED
 - HANGERS TO BE METRICALLY MOUNTED

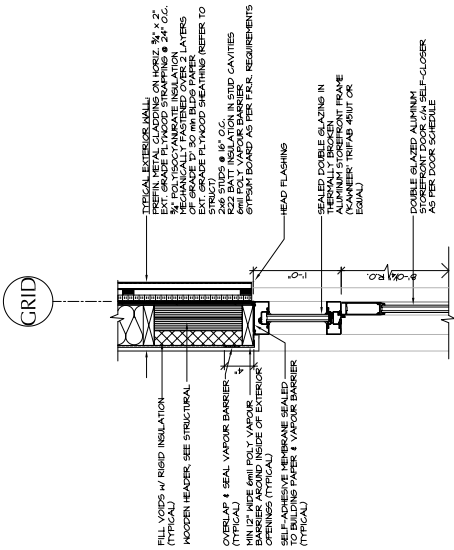
- DOOR NOTES
1. ALL WINDOWS TO BE METRIC OR APPROVED EQUAL
 2. ALL DOOR HANGERS TO BE METRIC HANDLES (A4)
 3. ALL DOOR HANDLES TO BE METRIC HANDLES (A4)
 4. ALL DOOR HANDLES TO BE METRIC HANDLES (A4)
 5. SUPPLY TO PROVIDE SHOP DRAWINGS FOR ALL DOORS
 6. PROVIDE SHOP DRAWINGS AND A SCHEDULE OF DOORS AND GLAZING
 7. PROVIDE SHOP DRAWINGS AND A SCHEDULE OF DOORS AND GLAZING
 8. PROVIDE SHOP DRAWINGS AND A SCHEDULE OF DOORS AND GLAZING
 9. PROVIDE SHOP DRAWINGS AND A SCHEDULE OF DOORS AND GLAZING
 10. PROVIDE SHOP DRAWINGS AND A SCHEDULE OF DOORS AND GLAZING

CONTRACT SERVICES
 DAVID WATKIN ARCHITECT
 5691 BRITTON ROAD
 KELownA, BC
 PROJECT NO.: 200-454
 DRAWING NO.: A-4
 DRAWING TITLE: DOOR & WINDOW SCHEDULES, THERMAL INSULATION VALUES & WALL SECTIONS
 SCALE: 1/8" = 1'-0"

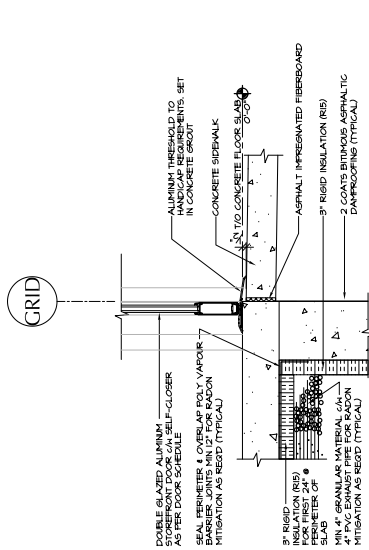
REVISION NUMBER	A-6
DATE	2020-05-14
BY	MM
CHECKED BY	MM
PROJECT NO.	2007654

NO.	DATE	DESCRIPTION
1	2020-05-14	ISSUED FOR PERMIT
2	2020-05-14	ISSUED FOR PERMIT
3	2020-05-14	ISSUED FOR PERMIT
4	2020-05-14	ISSUED FOR PERMIT
5	2020-05-14	ISSUED FOR PERMIT
6	2020-05-14	ISSUED FOR PERMIT
7	2020-05-14	ISSUED FOR PERMIT
8	2020-05-14	ISSUED FOR PERMIT
9	2020-05-14	ISSUED FOR PERMIT
10	2020-05-14	ISSUED FOR PERMIT

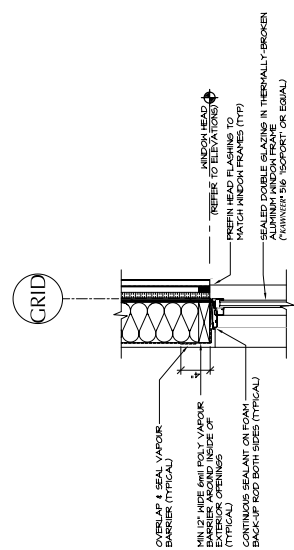
DATE PLOTTED	2020-05-14
TIME PLOTTED	10:00 AM
SCALE	AS SHOWN
BY	MM
CHECKED BY	MM
PROJECT NO.	2007654



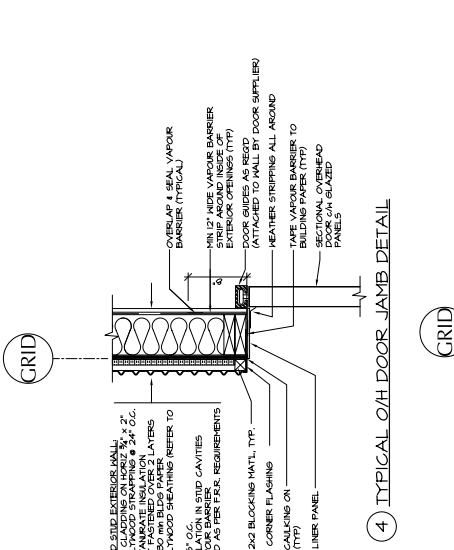
7 SECTION @ STOREFRONT DOOR HEAD



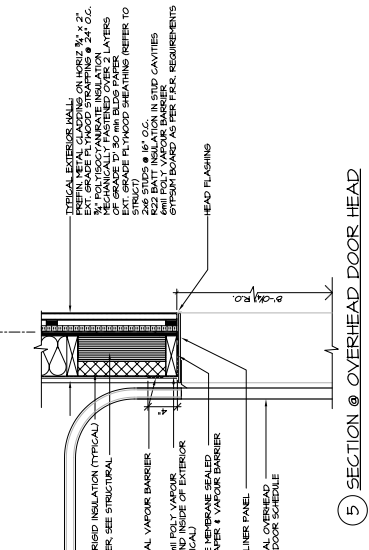
8 SECTION @ STOREFRONT DOOR SILL



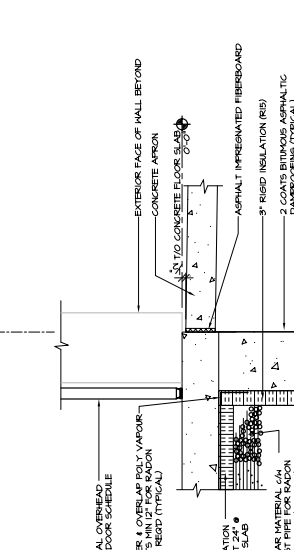
9 SECTION @ TYPICAL WINDOW HEAD



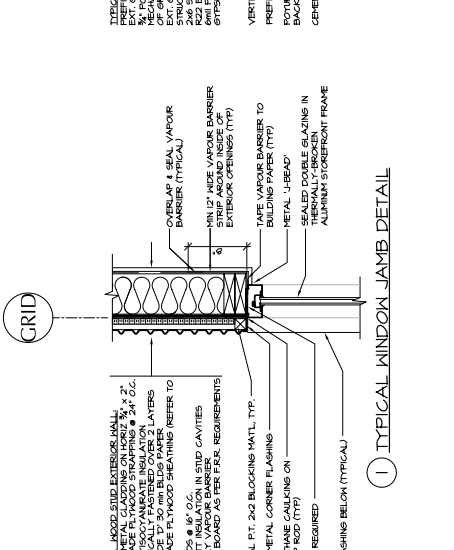
4 TYPICAL O/H DOOR JAMB DETAIL



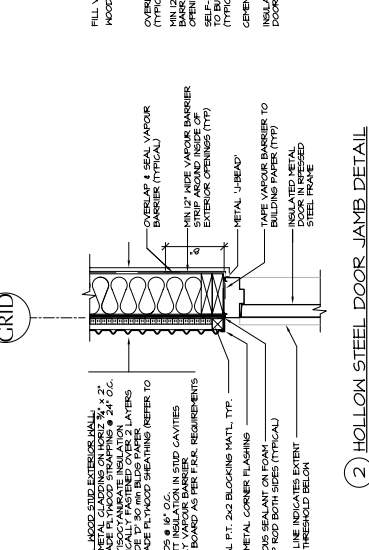
5 SECTION @ OVERHEAD DOOR HEAD



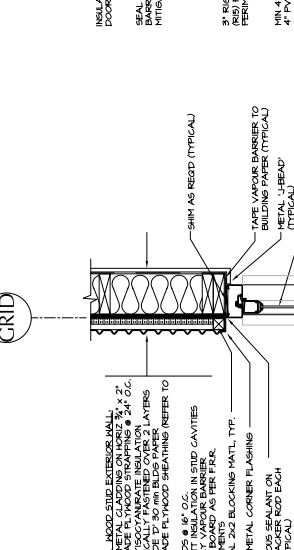
6 SECTION @ OVERHEAD DOOR SILL



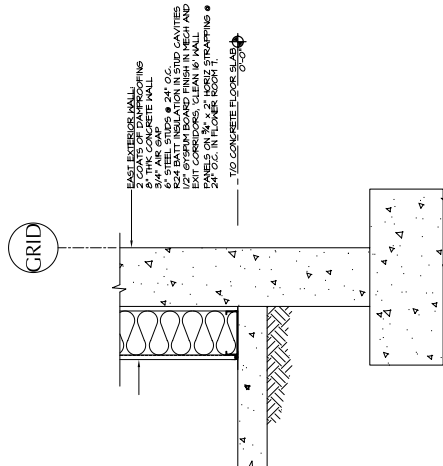
1 TYPICAL WINDOW JAMB DETAIL



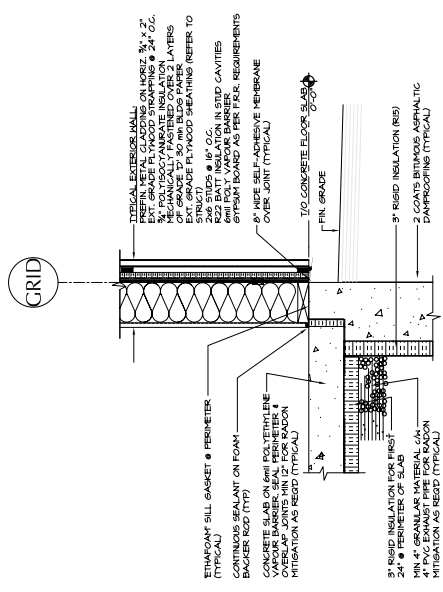
2 HOLLOW STEEL DOOR JAMB DETAIL



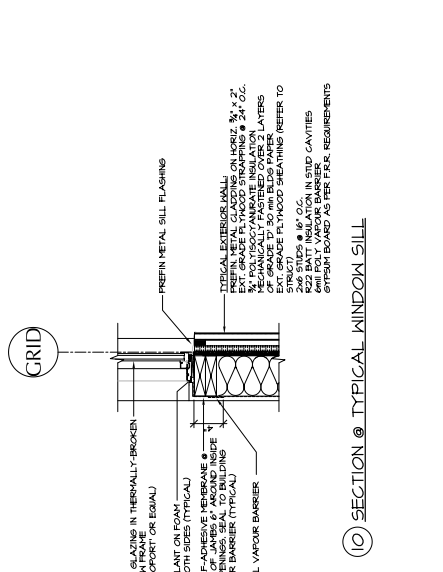
3 STOREFRONT DOOR JAMB DETAIL



(1) TYPICAL SECTION @ EXTERIOR WALL BASE



(2) TYPICAL SECTION @ HOLLOW STEEL DOOR HEAD



(3) TYPICAL SECTION @ EXTERIOR WALL BASE



(4) TYPICAL SECTION @ EXTG. EXTERIOR WALL

(5) SECTION @ EAST EXTERIOR WALL BASE

(6) TYPICAL SECTION @ EXTERIOR WALL BASE

(7) TYPICAL SECTION @ EXTERIOR WALL BASE

(8) TYPICAL SECTION @ EXTERIOR WALL BASE

(9) TYPICAL SECTION @ EXTERIOR WALL BASE

(10) SECTION @ TYPICAL WINDOW SILL

(11) TYPICAL SECTION @ HOLLOW STEEL DOOR HEAD

(12) TYPICAL SECTION @ HOLLOW STEEL DOOR SILL

SEALING AND WEATHERING DETAILS