



BUILDING NEEDS ANALYSIS

CENTRAL OKANAGAN SEARCH & RESCUE (COSAR)

December 14, 2020

URBAN
SYSTEMS

304 - 1353 Ellis Street, Kelowna, BC V1Y 1Z9 | T: 250.762.2517

CONTACT: Joel Short, MCIP, RPP
E: jshort@urbansystems.ca



PREPARED FOR:

Dan Martynov

Central Okanagan Search and Rescue
4680 Old Vernon Road
Kelowna, BC V1X 7V6

304 - 1353 Ellis Street, Kelowna, BC V1Y 1Z9 | T: 250.762.2517

File: 4935.0001.01

This report is prepared for the sole use of Central Okanagan Search and Rescue. No representations of any kind are made by Urban Systems Ltd. or its employees to any party with whom Urban Systems Ltd. does not have a contract. © 2020 URBANSYSTEMS®.

CONTENTS

1.0	INTRODUCTION	1
2.0	EXISTING SITUATION	2
2.1	Location.....	2
2.2	bUILDINGS.....	5
2.3	Parking	9
2.4	Site Area.....	9
2.5	Equipment.....	10
2.6	Land Tenure.....	14
3.0	ASSESSMENT OF EXISTING FACILITIES.....	15
3.1	Equipment Storage.....	15
3.2	Meeting Space.....	16
3.3	FILE STORAGE Space.....	17
3.4	Washrooms	18
3.5	Small Equipment Storage Space.....	18
3.6	Water and Sewer	20
3.7	Parking	20
3.8	Configuration	20
3.9	Location.....	21
3.10	Security.....	21
4.0	FUTURE GROWTH REQUIRMENTS	22
4.1	Membership.....	22
4.2	Equipment.....	22
4.3	Yard Space.....	22
5.0	CURRENT AND FUTURE NEEDS	23
5.1	Building space.....	23
5.2	Parking Space.....	26
6.0	RECOMMENDED ACCOMMODATION PLAN	27
6.1	Short Term (0 to 5 years).....	27
6.2	Mid Term (5 to 10 years).....	28
6.3	Long Term (10 to 20 years).....	28
7.0	SCHEMATIC DESIGN	29
8.0	COST ESTIMATE	31

TABLES

Table 2.1: Equipment List for Secure Storage.....	10
Table 2.2: Hours of Service.....	13

Table 2.3: Number of Callouts / Tasks.....	14
Table 2.4: Memberships.....	14
Table 3.1: Office Area.....	17
Table 3.2: Office Entry.....	17
Table 5.1: Existing Equipment and Vehicle Storage Space.....	23
Table 5.2: Required Storage Space for Equipment stored Elsewhere.....	23
Table 5.3: Required Storage Space for Additional Equipment.....	24
Table 5.4: Imperial Space Requirements.....	25
Table 5.5: Metric Space Requirements.....	25

FIGURES

Figure 2:1: Location Context.....	2
Figure 2:2: General Area of Facility.....	3
Figure 2:3: Facility Site.....	3
Figure 2:4: Arial View of site with New Parking Lot for Ellison Dog Park.....	4
Figure 2:5: COSAR Buildings Oblique View.....	4
Figure 2:6: Buildings Site.....	5
Figure 2:7: Main High Bay Building.....	6
Figure 2:8: Meeting Room.....	6
Figure 2:9: Quonset Hut.....	7
Figure 2:10: Large Shipping Container.....	8
Figure 2:11: Small Shipping Container.....	8
Figure 2:12: Parking Lot.....	9
Figure 2:13: Titan Inflatable Boat.....	11
Figure 2:14: Sweatmen Aluminum Boat Photo #1.....	11
Figure 2:15: Sweatmen Aluminum Boat Photo #2.....	12
Figure 2:16: All-Terrain Vehicles.....	12
Figure 3:1: Meeting Space.....	16
Figure 3:2: Office File Storage Area.....	17
Figure 3:3: Office File Storage Entry.....	17
Figure 3:4: Stored Items.....	18
Figure 3:5: Storage Closet.....	18
Figure 3:6: Storage Shelving.....	19
Figure 3:7: Storage Equipment.....	19
Figure 3:8: First Aid Station.....	19
Figure 3:9: Poor Water Quality.....	20

1.0 INTRODUCTION

Central Okanagan Search and Rescue (COSAR) is a valuable public service resource based out of Kelowna BC. COSAR traces its roots back to 1954. It is the oldest Search and Rescue group in BC. COSAR is operated solely by volunteers. These individuals are on call 24 hours/day 365 days a year. They do not get paid. COSAR members volunteer thousands of hours each year for Searches / Rescues, Training and Operational Service.

Over time the number of Callouts / Tasks have increased, as have the number of members and the amount of equipment acquired to remain an effective organization.

Presently COSAR is faced with an increasingly critical lack of space for equipment, training, and operational planning. For example, they had to relocate one of its major assets, the Mobile Command Centre (MCC), to an offsite area. The MCC currently sits at the Regional District of Central Okanagan (RDCO) offices which is not a secure location as COSAR runs the risk of one of its major assets being open to theft and vandalism.

COSAR requires 24 / 7 / 365 ready access to all its equipment. Having assets in separate locations adds time and complexity to COSAR's response, as such, necessitates the need for more space.

The purpose of this report is to perform an analysis of COSAR's current and future operational space needs and justification for seeking approvals, grants or funding for a future building. The objective is to complete a needs assessment for a long term COSAR facility which identifies the following:

- Detailed plan for future COSAR space needs;
- Size and features required for a future COSAR facility;
- Schematic design of future COSAR facility;
- Class D Construction Cost Estimate for a new COSAR facility, including identification of other costs such as design, permits, fees.

Following this introduction, the report is set out in several sections:

- Existing Situation
- Assessment of existing facilities
- Future growth requirements
- current and future needs
- Potential locations (Optional section)
- Possible partnerships
- Recommended accommodation plan for short term, mid-term, and long term
- Schematic design
- Cost estimate

2.0 EXISTING SITUATION

2.1 LOCATION

COSAR currently operates out to the Old Ellison Fire Hall located at 4680 Old Vernon Road, east of the Kelowna Airport between the Ellison Dog Park and the High Noon Baseball Park.

This site is owned by the City of Kelowna and leased to the Regional District of Central Okanagan, and The RDCO provides this facility to COSAR for their use. The location context, general surrounding area, and specific site are set out in the figures 2.1 to 2.5.

Figure 2.1: Location Context

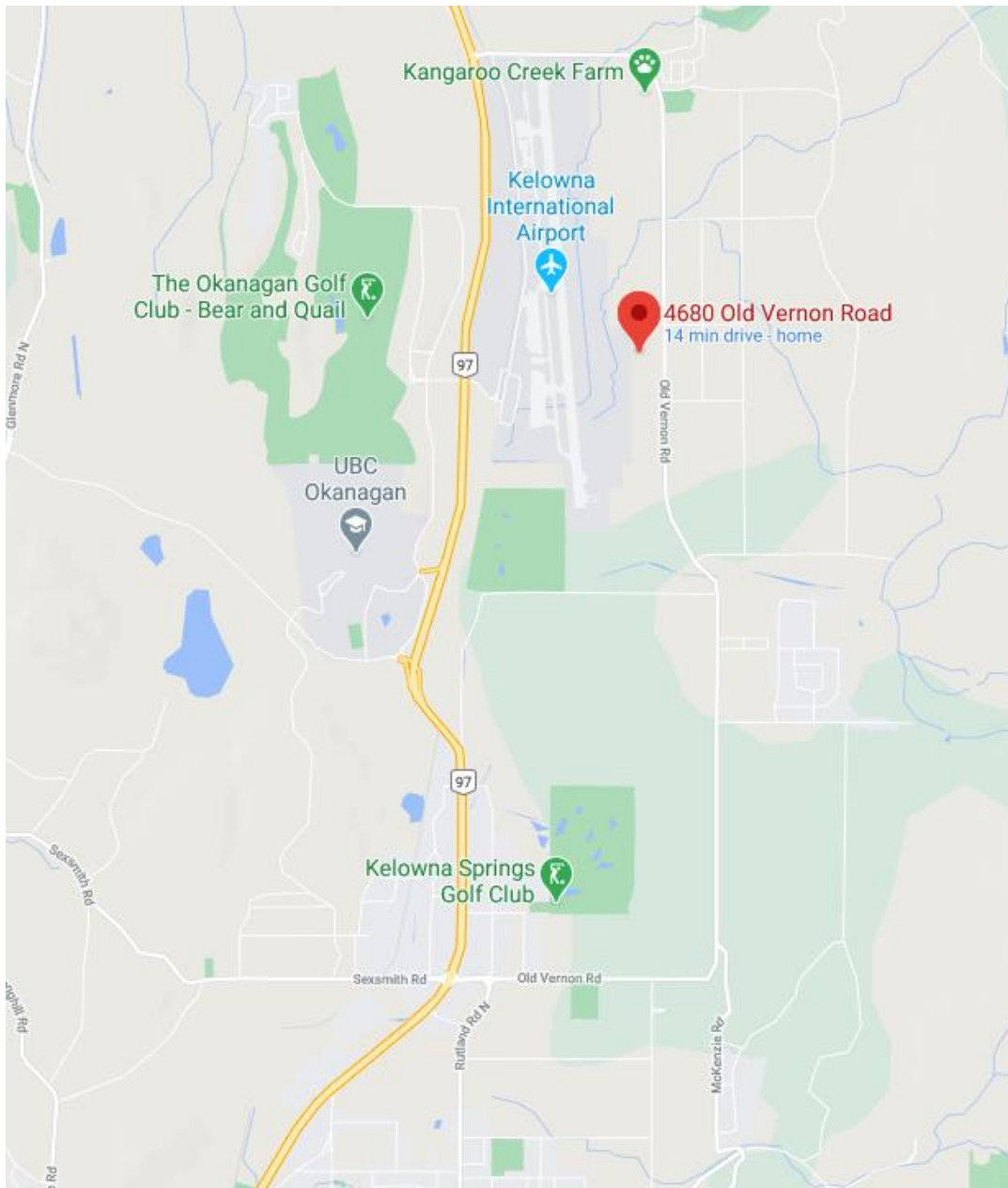


Figure 2:2: General Area of Facility

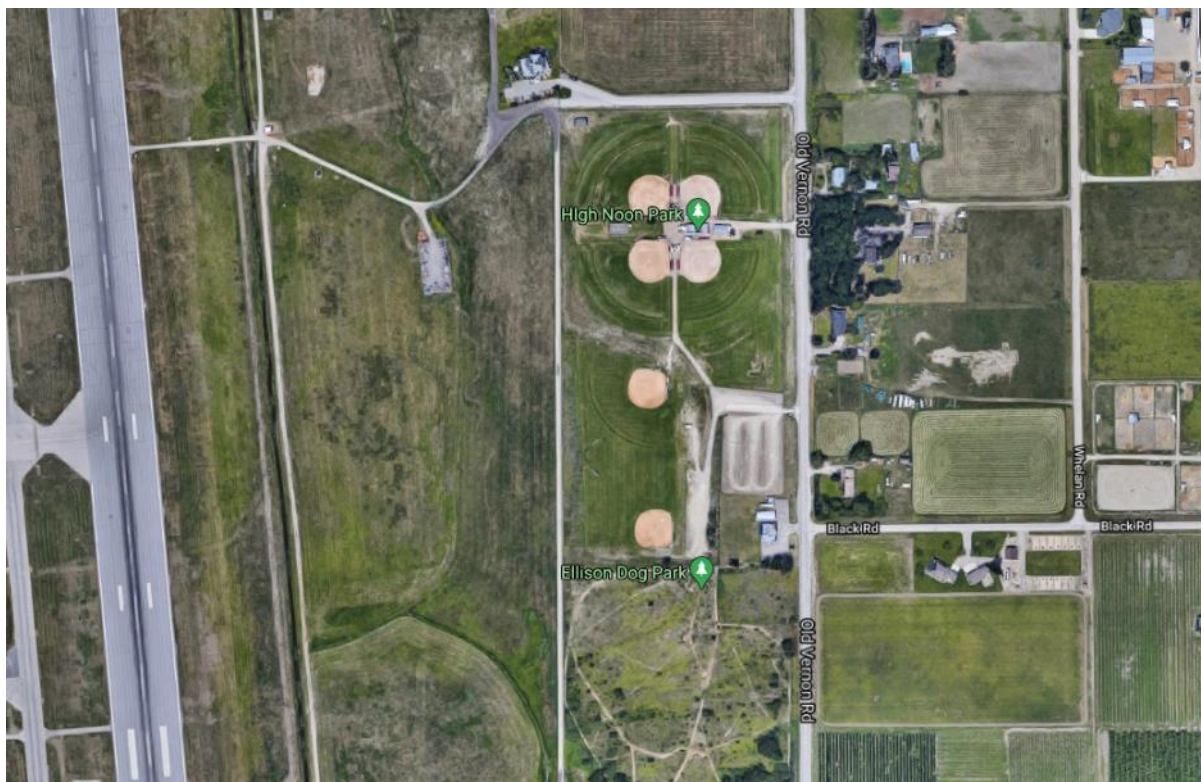


Figure 2:3: Facility Site

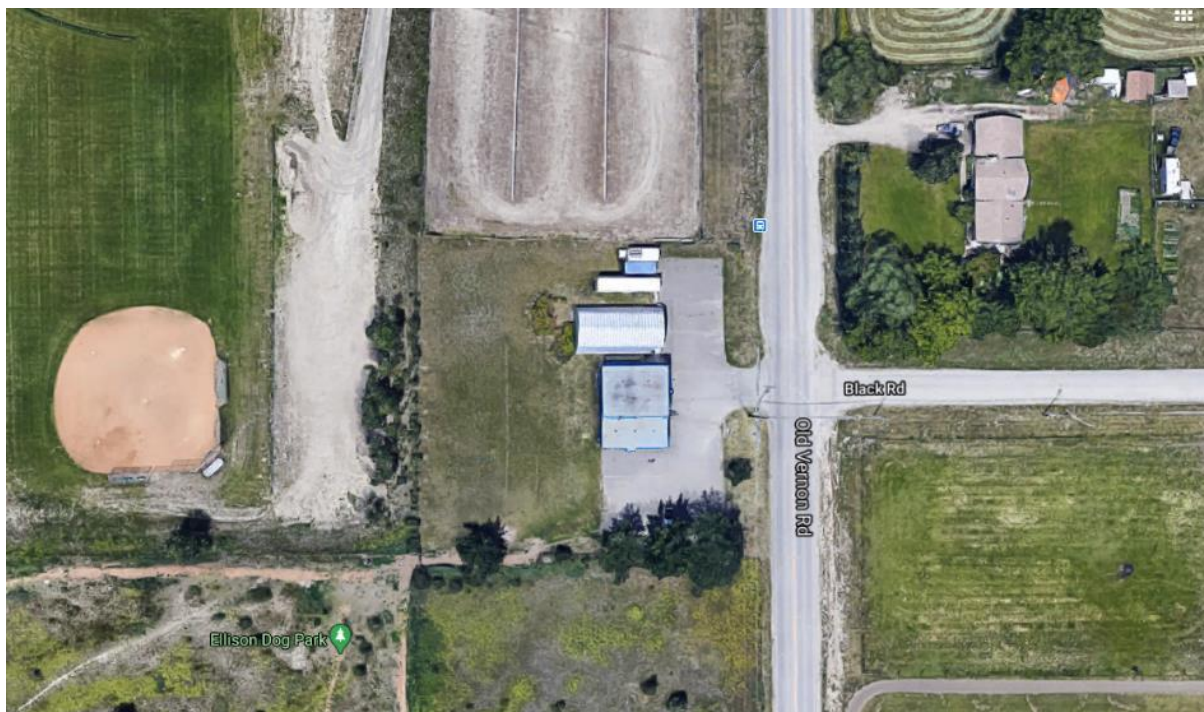


Figure 2:4: Arial View of site with New Parking Lot for Ellison Dog Park

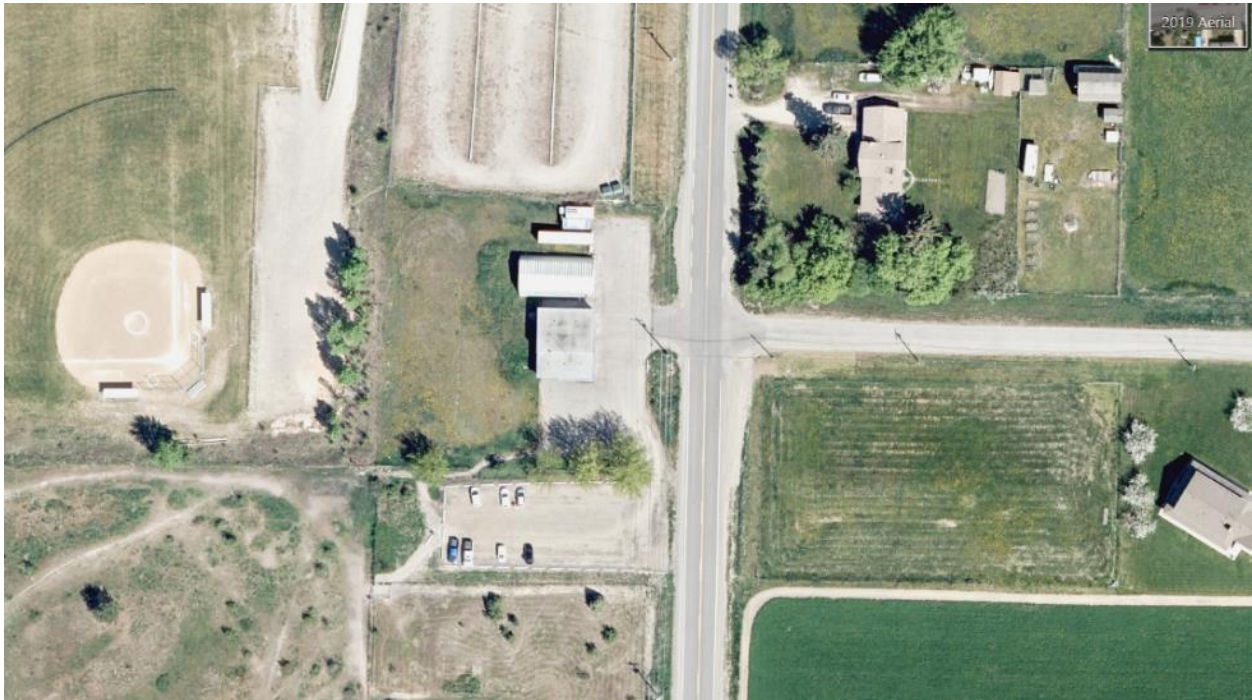


Figure 2:5: COSAR Buildings Oblique View



2.2 BUILDINGS

The site currently accommodates the following structures:

- The main high bay building and attached meeting room/washroom
- A Quonset hut
- A large metal shipping container
- A smaller metal shipping container (used by the Radio Club, not COSAR)
- Paved parking area

Figure 2:6: Buildings Site



The structures have the following area, dimensions, and use.

Main High Bay building:

- Area: 109 m² (1160 ft²)
- Dimensions: 8.9 m x 12.2 m (29 ft x 40 ft)
- Use: vehicle parking bays / workbench / shelving

Figure 2:7: Main High Bay Building



Meeting Room:

- Area: 46 m² (504 ft²)
- Dimensions: 6.3 m x 7.3 m (21 ft x 24 ft)
- Use: meeting room, small kitchen counter, storage

Figure 2:8: Meeting Room



Locked File Storage / Supplies / Washroom / Closet

- Area: 34 m² (368 ft²)
- Dimensions:
 - Locked file storage and supplies (was previously one of the washrooms) 13 m² (144 ft²) 2.7 m x 4.9 m (9 ft x 16 ft)
 - Washroom 2.7 m x 4.9 m (9 ft x 16 ft) (144 ft²)
 - Storage Closet (accessed from the garage high bay area, but part of the office/meeting room structure) 1.5 m x 4.9 m (5 ft x 16 ft) (80 ft²)
- Use: office and supplies, washroom, closet storage

Quonset Hut

- Area: 149 m² (1600 ft²), however only 91 m² (990 ft²) of useable equipment storage and parking space (discounting curved side walls)
- Dimensions: Total area: 9.0 m x 16.6 m (30 ft x 55 ft), Useable Area 5.5 m x 16.6 m (18 ft x 55 ft)
- Use: parking and equipment storage

Figure 2:9: Quonset Hut



Large Metal Shipping Container

- Area: 29 m² (320 ft²)
- Dimensions: 2.4 m x 12.0 m (8 ft x 40 ft)
- Use: Storage (inflatable boat and motor)

Figure 2:10: Large Shipping Container



The site also accommodates a smaller metal shipping container, but it is used by the radio club and is not available for storage of COSAR equipment

Figure 2:11: Small Shipping Container



2.3 PARKING

Outdoor parking on the site is available for a maximum of about 15 vehicles, without obstructing access to main high bays, Quonset hut and metal shipping container. However, in practicality, more parking occurs on other informal spaces on the site.

Figure 2:12: Parking Lot



About 22 parking spaces are available at Ellison Dog park immediately adjacent to the site, which was recently constructed and now provides for additional parking, however these spaces are not always available as sometimes they are completely occupied by dog park users. Many parking spaces are available just north of the site at the High Noon Baseball diamonds, however the gate to the parking spaces is often locked and not accessible to COSAR members.

2.4 SITE AREA

The site area is approximately 3600 m² (about 39,000 ft², or 0.89 acres), with about 60 m (about 200 ft) of frontage on Old Vernon Highway.

Only about 1600 m² (about 17,000 ft², or 0.4 acres) of the site is used for buildings and parking and the remainder is an undeveloped field sometimes used for training. The field is required for the septic tank and tile field as the site is not connected to a community sewer system.

2.5 EQUIPMENT

COSAR owns a significant amount of equipment that requires secure storage.

The major items of existing mobile equipment that should be stored in a garage facility or building are set out in the table below.

Table 2.1: Equipment List for Secure Storage

EQUIPMENT	UNITS	DIMENSIONS (IMPERIAL)	DIMENSIONS (METRIC)	STORAGE LOCATION
Trailers				
Single axel (trailer #1)	1	15' by 7'	4.6m by 2.1m	COSAR – 4680 Old Vernon Rd
Single axel (trailer #2)	1	15' by 7'	4.6m by 2.1m	COSAR – 4680 Old Vernon Rd
UTV trailer dual axel high deck (trailer #3)	1	22' by 8'6"	6.7m by 2.6m	COSAR – 4680 Old Vernon Rd- outside between buildings
Long trailer, dual axel, beaver tail (trailer #4)	1	36' by 8'6"	11m by 2.6m	COSAR – 4680 Old Vernon Rd
Single axel dedicated trailer for Titan inflatable (trailer #5)	1	18' by 7'	5.5m by 2.1m	COSAR – 4680 Old Vernon Rd in large shipping container
Sweatmen (Search and Rescue Boat) trailer (trailer #6)	1	32' by 8'6" Empty 40' by 9'5" Loaded	9.8m by 2.6m Empty 12.2m by 2.9m Loaded	Malibu Marine – 950 Ellis St. but sometimes stored offsite at remote storage managed by Malibu Marine
Enclosed dual axel (trailer #7)	1	21' by 8'	6.4m by 2.5m	COSAR – 4680 Old Vernon Rd
Vehicles				
Snowmobiles	6	11' by 3'6"	3.4m by 1.0m	COSAR – 4680 Old Vernon Rd
All terrain Vehicles (ATVs)	6	8' by 4'2"	2.4m by 1.3m	COSAR – 4680 Old Vernon Rd
Utility Terrain Vehicle (UTV - 6 passenger side by side)	1	17' by 5'10"	5.2m by 1.8m	COSAR – 4680 Old Vernon Rd
K1 Rescue Truck – Ford F550	1	22' by 8'6"	6.7m by 2.6m	COSAR – 4680 Old Vernon Rd
K2 Rescue Truck – Ford F350	1	22' by 7'	6.7m by 2.1m	COSAR – 4680 Old Vernon Rd
K3- Mobile Command Centre Vehicle - International	1	32' by 8'6"	9.8m by 2.6m	RDCO offices - 1450 KLO Rd
Watercraft				
Titan – inflatable boat with 50 hp outboard	1	On 18' by 7' trailer	On 5.5m by 2.1m trailer	COSAR – 4680 Old Vernon Rd
Sweatmen – Primary Aluminum search and rescue with twin 150 hp outboards. 26' Silver Streak San Juan Landing Craft.	1	26' long by 9'5" beam		Kelowna Yacht Club

Figure 2:13: Titan Inflatable Boat



Figure 2:14: Sweatmen Aluminum Boat Photo #1



Figure 2:15: Sweatmen Aluminum Boat Photo #2



Figure 2:16: All-Terrain Vehicles



In addition to these vehicles, trailers and boats, COSAR also has an extensive list of other equipment that requires secure storage and access. These include the types of items set out below and are provided in detail in Appendix A:

- Portable radios, battery chargers and rechargeable batteries
- Computers and laptops
- First aid kits
- Personal Protective equipment
- Audio visual equipment
- Headlamps
- Satellite tracking and GPS equipment
- Scene lights
- Medical rescue equipment
- Rope rescue equipment

While this equipment requires storage, it is also important to recognize that a very significant amount of equipment is stored at member's homes, and also that members provide their own personal equipment, used at times for search and rescue purposes. This includes items such as:

- Snowmobiles
- ATVs
- Boats
- Trailers
- Mountain bikes and e-bikes
- Snowshoes
- Touring skis / Split-boards
- Kayaks and rafts
- Cameras
- Cell phones

Membership

COSAR is operated solely by volunteers. COSAR members volunteer their time to be a part of the team. These individuals are on call 24 hours/day 365 days a year. They do not get paid. COSAR members volunteer thousands of hours each year for Searches / Rescues, Training and Operational Service.

The hours of service by members for 2015 to 2017 are set out in **Table 2.2** below.

Table 2.2: Hours of Service

	HOURS OF SERVICE BY YEAR				
	2015	2016	2017	2018	2019
Search	2155	1170	2218	3437	2946
Training	1993	2745	4822	4549	8391
Service	2088	2767	2521	3745	
Total	6236	6682	9561	11731	

The number of callouts and tasks and that number of days each year are set out in the table below.

Table 2.3: Number of Callouts / Tasks

	CALLOUTS / TASKS AND DAYS PER YEAR				
	2015	2016	2017	2018	2019
Callouts / Tasks	51	49	47	50	69
Days	63	57	64	64	

Membership has varied from year to year, as set out in the table below.

Table 2.4: Memberships

	MEMBERSHIP IN EACH YEAR				
	2015	2016	2017	2018	2019
Number of Members	49	32	44	43	42

Over time the number of Callouts / Tasks have increased as have the number of members and the amount of equipment acquired to remain an effective organization.

2.6 LAND TENURE

The existing facility is owned by the City of Kelowna and leased to the Regional District of Central Okanagan (RDCO) which provides the facility to the Central Okanagan Search and Rescue. The RDCO leases the property from the City for \$1.00/year on a five-year renewable term. The current lease will expire in less than three years and could be renewed for one more five-year term, which means that in about 7 years COSAR will need to be located on a different site. COSAR understands that the building is reaching the end of its useful life and the City will be requiring this site for other uses.

The Airport YLW Master Plan 2045 identifies a large area along the east side of the airport, including the COSAR site, for Airside Commercial use. Figure 72 - Airport Land Use Plan - in the YLW Master Plan shows the area designated for Airside Commercial. The YLW Master Plan shows the land is also located within the Agricultural Land Reserve (ALR), and while the Master Plan recommends the City seek exclusion from the ALR, being located in the ALR presents another complication for building a new facility. If the land is still in the ALR when COSAR would need to build a new facility, it would be subject to approval by the Agricultural Land Commission as a non-farm use, which may not be approved. This all indicates that construction of a new facility on this site is not feasible, and COSAR needs to look for a new site.

3.0 ASSESSMENT OF EXISTING FACILITIES

The existing facilities can be assessed based on the provision of a number of components and consideration of factors:

- Equipment storage
- Meeting space
- Office space
- Washrooms
- Small equipment storage space
- Water and sewer services
- Parking
- Configuration
- Location
- Security

3.1 EQUIPMENT STORAGE

The existing facilities provide for storage for a portion of the equipment, however there are important components that are not adequately stored:

- The boat trailer for Sweatmen is stored at Malibu Marine's main storage center at 950 Ellis Street, and is sometimes stored at their remote location. Staff have requested that COSAR give them 24 hr notice to access it and only during business hours: Tuesday - Saturday 08:30 - 17:00. This means the trailer is not reasonably available for up to 3 days / week.
- One large trailer is stored outside on the site where it is vulnerable to theft.
- The K3 mobile Command Centre Vehicle is parked outside at the RDCO offices at 1450 KLO Road, where it is vulnerable to theft and vandalism. For example, a homeless person lived under the vehicle for a time. In order to charge his cell phone, he unplugged the power line used to maintain the Command Center batteries at full charge. This would be an issue in an emergency situation if the Command Centre battery were drained and it couldn't start, or the equipment that relies on battery power did not work. The outdoor storage also accelerates the wear on the command centre. recently COSAR had to repair the seams on the roof due to exposure. The vehicle experiences premature wear and tear from exposure to environmental conditions.
- The Titan inflatable boat is stored in a metal shipping container, which is relatively secure, but provides little room for access to the boat, and is only a temporary storage solution.

3.2 MEETING SPACE

Figure 3.1: Meeting Space

The existing meeting space can accommodate about 12 people around a table, and approximately 24 people if reconfigured as tightly spaced lecture format with rows of chairs facing forwards. Of course, this would be in pre or post COVID times, and does not meet any COVID spacing requirements.

With a membership of approximately 50 people, the meeting space does not accommodate meetings of the membership, or instruction where all the members are required to attend. At times COSAR can accommodate the entire membership by pulling all of the vehicles out of the high bay parking garage and meeting in that space, however this does not work for use of any projectors, the space is not heated and it can be somewhat awkward and time consuming to reconfigure the space.



The current space is 46.8 m² (504 ft²). A multi functional space that could allow for larger meetings around a table and allow reconfiguration to accommodate 50 people in a classroom type setting would be more in the range of 93 to 111 m² (1000 to 1200 ft²). This assumes about 1.8 m² (20 ft²) per person, plus an allowance for some entry and exit space.

Additional space would be required if the space were to accommodate side tables, shelving for some documents, television screens, projection screens and audio visual equipment. In combination with the 93 to 111 m² (1000 to 1200 ft²), an additional about 28 m² (300 ft²) would be required for additional space for a total of about 120 to 139 m² (1300 to 1500 ft²) total for the meeting space.

3.3 FILE STORAGE SPACE

Currently the facility lacks formal office space. In order to accommodate the needs for office file storage, COSAR converted one of the washrooms into file storage space. There were previously two washrooms: a male side and a female side – one side was converted to office file storage space leaving the other side as a gender neutral washroom. This file storage space in a washroom accommodates files, shelving, a bulletin board and storage boxes. Due to the long narrow configuration, it does not allow for a desk, and while the floor area of about 13 m² (144 ft²) is adequate for an office, in order to function as an office, a space that is approximately 12 ft by 12 ft would be more functional. A slightly larger space that could accommodate two desks as shared workspaces plus filing and storage may be more functional. Office space of approximately 16 ft by 14 ft for 224 ft² (about 21 m²) would accommodate these items.

Figure 3.2: Office File Storage Area



Figure 3.3: Office File Storage Entry



3.4 WASHROOMS

In the existing facility one of the washrooms has been converted to an office file storage space used for file cabinets, shelving, bulletin board and office storage. The other washroom continues to be used as the only washroom facility. A single washroom may be inadequate at times when meetings of up to 50 people are being held, or classes of up to 15 people which may run for several hours. Two washrooms, or a single larger gender-neutral washroom with separate stalls, screened urinals, and two sinks would better serve the needs for meetings, classes, practices and search coordination. The floor area required for two washrooms would be similar the existing sizes of 4.9 m by 2.7 m (16 ft by 9 ft) for a total of 26.7 m² (288 ft²), or a single larger washroom about the same 288 ft² size.

3.5 SMALL EQUIPMENT STORAGE SPACE

The current facilities have some storage space for small types of equipment including portable radios, battery chargers, rechargeable batteries, first aid kits, Personal Protective Equipment, headlamps, satellite tracking and GPS equipment, medical rescue equipment and rope rescue equipment. These items are stored in various locations throughout the facility and in a storage room that is about 5 ft by 16 ft (80 ft²). Some examples of storage areas are set out in the pictures below.

Figure 3.4: Stored Items



Figure 3.5: Storage Closet



The dedicated storage space is too small, and the ad hoc storage spaces are too dispersed to allow for effective organization and storage, and it does not allow space for additional equipment as it is acquired over time. Currently the building uses about 110 linear feet of shelving and wall space for storage divided amongst various areas.

Figure 3:6: Storage Shelving

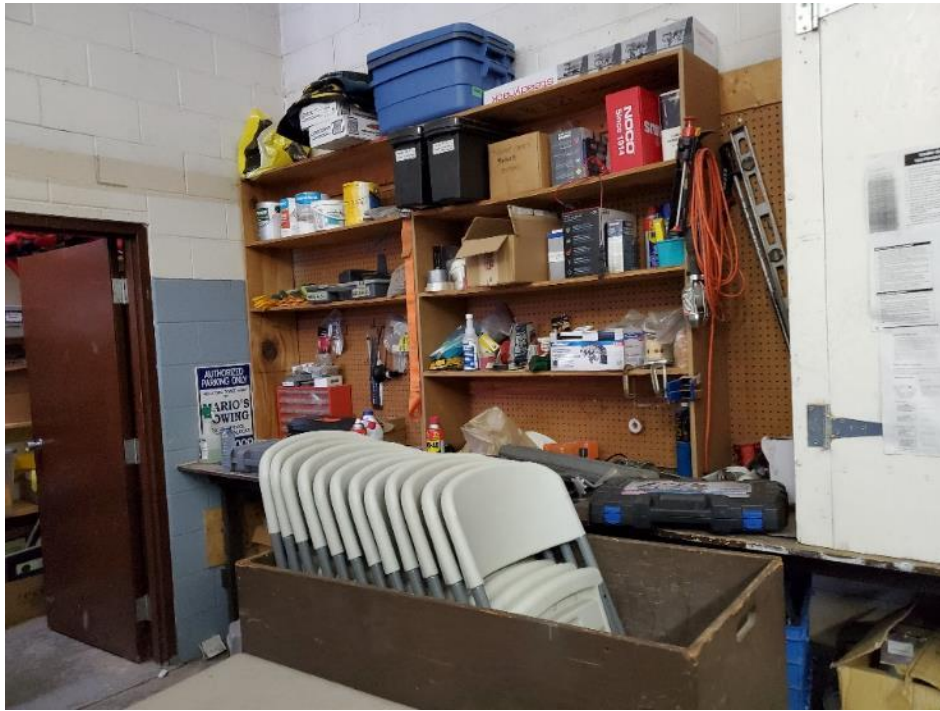


Figure 3:8: First Aid Station



Figure 3:7: Storage Equipment



A dedicated storage space of approximately 93m² (1000 ft², say 50 ft by 20 ft), would allow for about 27.4 m (90 ft) of wall space for shelving about 2 ft deep and about 13.7 m (45 ft) of shelving about 4 ft deep, for a total of about 135 linear feet of well organized shelving.

3.6 WATER AND SEWER

The water supplied to the site is currently not suitable for drinking, which means that for callouts members can't fill up water bottles at the site using the tap. Bottled water needs to be brought in, which is less sustainable than tap water. Boiling water for use is not practical since there is no stove at the facility.

The site is not serviced with community sewer. The onsite septic tank and tile field has limitations on the types of uses and number of people that can be accommodated on the site at any one time.

Figure 3:9: Poor Water Quality



3.7 PARKING

The existing site provides for about 15 parking spaces although none are marked and only about 8 would be considered defined parking locations. The benefit of the existing site is that an additional 22 spaces exist adjacent to the site at the Ellison Dog park, however these spaces are not always available as sometimes they are completely occupied by dog park users. Furthermore, Dog park patrons sometimes complain when COSAR members park in that parking lot. Many more spaces exist at the High Noon Baseball Park to the North, however the gate to those parking spaces is often locked and not accessible to COSAR members. Vehicle parking to accommodate membership and training meetings is inadequate on the site itself, but the nearby parking at the Dog park provides an option for parking if not occupied by dog park users.

3.8 CONFIGURATION

The current site is reasonably well configured for its use however backing large vehicles and trailers into the parking bays, Quonset Hut or metal shipping containers can prove a challenge, and sometimes requires vehicles to start backing across Old Vernon Road. While the speed limit is posted at 70 km/hr on this road, many vehicles far exceed this limit, and it can present a dangerous situation when trucks are backing up across the road and traffic is approaching quickly. An improvement on the configuration would be if it allowed for pull through at some parking areas, or enough room to back up trucks and trailers without having to extend onto Old Vernon Road.

3.9 LOCATION

The current location at 4680 Old Vernon Road is somewhat inefficient as members need to travel out to the site for meetings and to obtain equipment, yet most members live closer to the centre of Kelowna.

COSAR serves a large area covering Kelowna, Lake Country, West Kelowna, Peachland, Joe Rich and up to Big White as well as approximately halfway up the Connector towards Merritt. We understand that, anecdotally, most of the callout activity occurs south of the airport and east of Okanagan Lake. A more central location would be more efficient for members and COSAR operations.

3.10 SECURITY

The existing site has experienced security issues with theft and vandalism. To combat this COSAR has install monitoring cameras, and stores most equipment inside, although due to space constraints one trailer is stored outside and is quite vulnerable to theft. The Mobile Command Centre is also vulnerable to theft and vandalism as it is located in an outdoor parking lot at the Regional District offices. The older main building and Quonset hut are not entirely secure from break-ins, and any new facility should be designed with security as a high priority. COSAR has many vehicles such as ATVs, snowmobiles, and trailers that are highly desirable theft targets, and specific measures would need to be taken to prevent theft in future facilities.

4.0 FUTURE GROWTH REQUIREMENTS

4.1 MEMBERSHIP

COSAR generally aims to maintain its membership numbers at about 50 members. The number of members would change with an increase of the number or intensity of tasks, but 50 members is very manageable and keeps everyone involved. If the membership numbers increase, the equipment needs would also increase, which would require additional storage room in the building. While future need may influence membership, for the foreseeable future COSAR will maintain membership at approximately 50 people.

4.2 EQUIPMENT

COSAR currently has plans to acquire additional needed equipment which will require additional storage space. The additional equipment is as follows:

- A second smaller Utility Terrain Vehicle (UTV). The existing 6-person side by side is useful for transportation but is sometimes too large to get close access to sites. The smaller side by side will allow for more maneuverability.
- Two new All Terrain Vehicles (ATVs).
- Two new Snowmobiles.
- A replacement for the K2 Rescue Truck - which is 21 years old - a 1999 Ford F 350.
- Two to four additional E-bikes.

While a new vehicle will replace the old K2, there will likely be a period of overlap when both the old K2 and the new vehicle require storage. The old K2 may also be kept in service for some time, so it would be useful to have adequate storage for both the old and new K2 rescue truck.

4.3 YARD SPACE

The existing site has an undeveloped grassy area that is sometimes used for training, however based on discussions with COSAR this space is useful but not necessary for the future, as outdoor training can be accommodated off site. Often outdoor training can be held in rural areas that reflect search and rescue conditions. Additional yard space would be a minor advantage in a new facility, but not a critical factor.

5.0 CURRENT AND FUTURE NEEDS

5.1 BUILDING SPACE

The assessment of current needs is based on the following assumptions:

- the existing equipment and vehicle storage areas should be consolidated into one facility.
- the meeting space, office space, and washrooms should meet the needs of the existing membership and functions.

The amount of existing equipment and vehicle storage space in the current facilities is summarized in the table below.

Table 5.1: Existing Equipment and Vehicle Storage Space

EXISTING EQUIPMENT STORAGE AREA ON SITE	LENGTH IN M	WIDTH IN M	AREA IN M ²
Main High Bay Garage	12.2	8.9	109
Quonset Hut	16.6	9.0	149
Shipping Container	12.0	2.4	29
Total			287

The amount of additional storage space required to adequately store equipment that is currently stored elsewhere is set out in the table below.

Table 5.2: Required Storage Space for Equipment stored Elsewhere

EQUIPMENT STORED ELSEWHERE OR OUTSIDE	EQUIPMENT LENGTH M	EQUIPMENT WIDTH M	REQUIRED EXTRA LENGTH FOR STORAGE (COMBINED BOTH ENDS) M	REQUIRED EXTRA WIDTH FOR STORAGE (COMBINED BOTH SIDES) M	TOTAL LENGTH IN M	TOTAL WIDTH IN M	TOTAL AREA REQUIRED IN M ²
Boat trailer for Sweatman	9.8	2.6	2	2	11.8	4.6	54
K3 Mobile Command Centre vehicle	9.8	2.6	2	3	11.8	5.6	66
UTV trailer dual axel high deck (trailer #3)	6.7	2.6	1	1.5	7.7	4.1	32
Total							152

By combining the existing equipment storage area on site of about 287 m² (3089 ft²) with amount of space required to adequately store equipment stored elsewhere or outside of about 152 m² (1636 ft²), the two amounts add to about 439 m² (4725 ft²) of space. The type of space required is high bay garage space that allows for members to park vehicles and back up trailers containing equipment, along with potentially some pull through space.

As noted in sections above, the amounts of meeting, office washroom and storage space to meet existing needs is as follows:

- Main meeting room space required to address existing needs is about 139 m² (1500 ft²).
- Office space required to serve existing needs for two desks, shelving, files, storage cabinets is about 20.8 m² (224 ft²).
- Washroom space of about 26.9 m² (288 ft²).
- Storage space of about 93 m² (1000 ft²).

Additional space beyond the existing facilities required to meet existing needs are as follows:

- A multifunctional smaller meeting room, planning room, radio room of about 20.8 m² (224 ft²) – about the same size as the office space by configured as a meeting room.

In addition to serving the existing needs, a facility should also serve the future requirements. COSAR has plans to acquire additional equipment the needs storage including:

- A second smaller Utility Terrain Vehicle (UTV);
- Two new All Terrain Vehicles (ATVs) – one of these new ATVs was acquired while writing this report, and the purchase of another is under way, but there is still the need to store the two new ATVs;
- Two new Snowmobiles; and
- A replacement for the K2 1999 Ford F 350 Rescue Truck.

The additional rescue truck to replace older K2 truck will need space in order to park this truck until the older truck is retired or sold. While the older truck will eventually be gone, this space will also provide useful flex space for other equipment as it is bought or sold, and may allow for a small amount of overlap space for ATVs and Snowmobiles, particularly during times of the year when both need to be inside at the same time.

The space required to store this equipment is set out in table 5.3 below.

Table 5.3: Required Storage Space for Additional Equipment

ADDITIONAL EQUIPMENT TO BE ACQUIRED	EQUIPMENT LENGTH M	EQUIPMENT WIDTH M	REQUIRED EXTRA LENGTH FOR STORAGE (COMBINED BOTH ENDS) M	REQUIRED EXTRA WIDTH FOR STORAGE (COMBINED BOTH SIDES) M	TOTAL LENGTH IN M	TOTAL WIDTH IN M	TOTAL AREA REQUIRED IN M ²
Additional rescue truck	6.7	2.6	2	1	8.7	3.6	31
Second Utility Terrain Vehicle on trailer	6.7	2.6	1	1.5	7.7	4.1	32
Two new ATVs on trailer	4.6	2.1	1	1.5	5.6	3.6	20
Two snowmobiles on trailer	4.6	2.1	1	1.5	5.6	3.6	20
Total							103

High Bay Garage space is required to store this equipment, and if the 103 m² required for the new equipment is added to the 437 m² High Bay Garage space required for existing equipment, the total is about 540 m², or about 5800ft², which could be rounded up to about 6000 ft².

Since the intent of COSAR is to maintain a membership of about 50 people, all that is required for additional meeting or office space is the additional amount needed to meet the existing membership. No additional amount specific to growth is required in the short to medium term. Once the shortage of space is addressed to meet the existing membership numbers, this space should be sufficient for the foreseeable future, as long as the membership does not exceed 50 people.

In summary, the space required to meet existing and immediate future needs is set out in the tables below.

Space Requirements

Imperial

Table 5.4: Imperial Space Requirements

TYPE OF SPACE	APPROXIMATE AREA (FT ²)	APPROXIMATE LENGTH (FT.)	APPROXIMATE WIDTH (FT.)
High Bay Garage Space	6000	100	60
Meeting room / multi purpose room	1500	50	30
Office space / storage / shelving / files	224	16	14
Radio room / planning room / smaller meeting room	224	16	14
storage space	1000	50	20
Two washrooms (9'x16' each)	288	18	16
Hallway	As required		
HVAC, hot water, mechanical	As required		

Metric

Table 5.5: Metric Space Requirements

TYPE OF SPACE	APPROXIMATE AREA (M ²)	APPROXIMATE LENGTH (M)	APPROXIMATE WIDTH (M)
High Bay Garage Space	557.4	30.5	18.3
Meeting room / multi purpose room	139.4	15.2	9.1
Office space / storage / shelving files	20.8	4.9	4.3
Radio room / planning room / smaller meeting room	20.8	4.9	4.3
Storage space	92.9	15.2	6.1
Two washrooms (9'x16' each)	26.8	5.5	4.9
Hallway	As required		
HVAC, hot water, mechanical	As required		

While the analysis above addressed the needs required to address existing requirements and the needs for the near future, there are some additional items that are considered as desirable:

- A small kitchen area that can accommodate a sink, dishwasher, fridge, microwave, counter space, cabinets of about 11.1 m² (120 ft²), about 3.7 m by 3 m (12 ft by 10 ft) in dimensions.
- A wash bay, which would add another approximately 3.7m (12 ft) of bay width to the high bay space with a drive in and drive out space along with water supply and wash bay drainage.
- Drying room with drying racks for technical rope rescue gear. This gear must be kept dry to ensure that it does not malfunction or break during critical rescue operations.
- Large work bench area – a space of about 0.9m by 3m (3 ft by 10 ft) could be integrated into the ends of one of the high bay space bays where the full storage length is not required by equipment.
- Showers – two shower stalls and areas to dry off would add about 5.6 m² (60 ft²) to the washroom space.

Items that are considered as desirable that will impact the site configuration are as follows:

- Drive through bays.
- Enough room to turn a 70 foot long vehicle / trailer combination.

Other items that would be useful to consider include the following:

- Forced air heating in high bay areas.
- Power back up (generator set or solar).
- Mechanics pit.
- Helicopter landing area.

5.2 PARKING SPACE

The existing facility has inadequate parking, although members can sometimes park at the Ellison Dog Park parking lot. Another facility located elsewhere would need to provide parking or be located where COSAR could use parking shared from other facilities.

While ideally a site should provide 50 parking stalls to allow each member to drive their vehicle to the site for meeting, it is often considered unrealistic in parking provision to have a site that will accommodate 100% of the parking needs at all times. Often parking is designed to provide for parking requirements that meet the needs in most of the situations. A site with 20 to 30 parking stalls would be adequate to accommodate training of up to 15 members plus instructors on many occasions and many of the members during a membership meeting. A future location should allow for members to find some additional parking nearby along streets or in other parking areas for when the entire membership attends. Carpooling could be encouraged to meetings if the full amount of parking is not available. Transit or cycling might also be possible depending on the location of the site.

6.0 RECOMMENDED ACCOMMODATION PLAN

6.1 SHORT TERM (0 TO 5 YEARS)

The following actions are recommended for the short term of 0 to 5 years:

1. Identify secondary secure high bay storage space for lease. The storage space would be for the Mobile Command Centre, the Sweatman Trailer, the new additional rescue truck, the second Utility Terrain Vehicle on a trailer, two new ATVs on a trailer and two snowmobiles on a trailer. This would need to be about 4 bays, or about 230 m² (about 2500 ft²), approximately 15.2 m (50 ft) wide by 15.2 m (50 ft) deep.

This would allow for a second consolidated location for storage. While it would be ideal to have this storage on the current COSAR site, any building on this site would need to be abandoned or moved in a few years when the COSAR facility moves. Any permanent construction on this site would not be an effective use of funds.

2. Determine the location of the septic tank and tile field, to determine the portion of the site that could potentially be used for other purposes such as a temporary fenced compound temporary metal building.
3. Consider a fenced compound immediately south of the main office building, either on the paved area adjacent to the building, or the grass field southwest of the building if the septic tank and tile fields are not under this location. The paved area was previously required for parking, but the newly constructed parking for the Ellison Dog Park provides the option for members to park there now, freeing up this space for fenced compound use. The fenced compound could only be used for storage of trailers without equipment. While a fenced compound should be a somewhat adequate deterrent to theft of trailers, it would not be adequate to deter theft of a trailer loaded with ATVs or snowmobiles. The fenced compound could be a relatively low-cost investment that could be abandoned once COSAR moves to another site.
4. Consider a temporary metal building that could be moved to the eventual permanent site. A relocatable prefabricated steel building, such as the Atco Fold-A-Way, could be constructed on the paved parking area immediately South of the office building to allow for secure storage of trailers with ATVs, UTVs and snowmobiles, or the Command Center vehicle . The Fold-A-Way structure could be 24 feet wide and 40 feet deep to fit into the space and accommodate two trailers, or a trailer and the K3 command vehicle. After COSAR moves to another site the building could be dismantled and moved to the new site for additional storage space, or sold if not needed.
5. Have the City move the big green Solid Waste Containers from the south east corner of the parking for the High Noon parking lot to the southwest corner. Then create a gravel driveway for members to drive through and park at the High Noon parking lot if they need to park there since there would be less parking on site due to the fenced compound or temporary building. This would provide for easy access to supplementary parking if the parking at the Ellison Dog Park is full.
6. Collect information on the location of callouts for use in a geographic information-based system to identify optimal locations for COSAR facilities.

7. Look for an existing building that could be repurposed and leased for COSAR facilities.
8. Secure funding or agreements to pay for lease costs for expanded facilities. For example, explore the potential for COSAR to be funded as a permanent Regional District function paid by taxpayers in participating jurisdictions.
9. Identify and evaluate alternative sites to accommodate construction of new consolidated COSAR facilities.
10. If pursuing a new building, secure funding for the new building in the range of \$2.5 to \$3.0 million (a building cost estimate is set in Section 8 below), as well as the cost of acquiring the land and providing servicing to the land.
11. Identify and meet with potential partners to discuss opportunities to partner on a new building. Partner with an organization with complementary interests.
12. Choose a site for a new building by 2023, or an existing building suitable for relocation, by 2025.

6.2 MID TERM (5 TO 10 YEARS)

The following actions are recommended for the mid term of 5 to 10 years:

1. Complete construction of a new facility, if constructing a new building.
2. Consider constructing a larger facility than currently required and the leasing out the additional space over the short to medium term. This would generate revenue and also provide space for potential expansion over the long term.
3. Move to a new facility, either a leased facility in an existing building, or a newly constructed facility on a new site. The facility should meet the requirements identified above, which is generally 557m² (6000 ft²) of high bay space with at least 6 bays and ideally 8 bays, 232 m² (2500 ft²) of multipurpose room, meeting room, office and washroom space, and about 93 m² (1000 ft²) of small equipment storage, along with 20 to 30 parking stalls. If constructing a new facility, an additional area, for example 3000 ft², could be constructed and leased out over the short to medium term. The site should be centrally located in Kelowna.
4. Secure a long-term lease for an existing building, if moving to an existing building.
5. Move the relocatable prefabricated steel building to the new site, if that option was chosen for the short term and if it can fit on the site.
6. Secure permanent continuous funding for COSAR operations and building costs through participating jurisdictions.

6.3 LONG TERM (10 TO 20 YEARS)

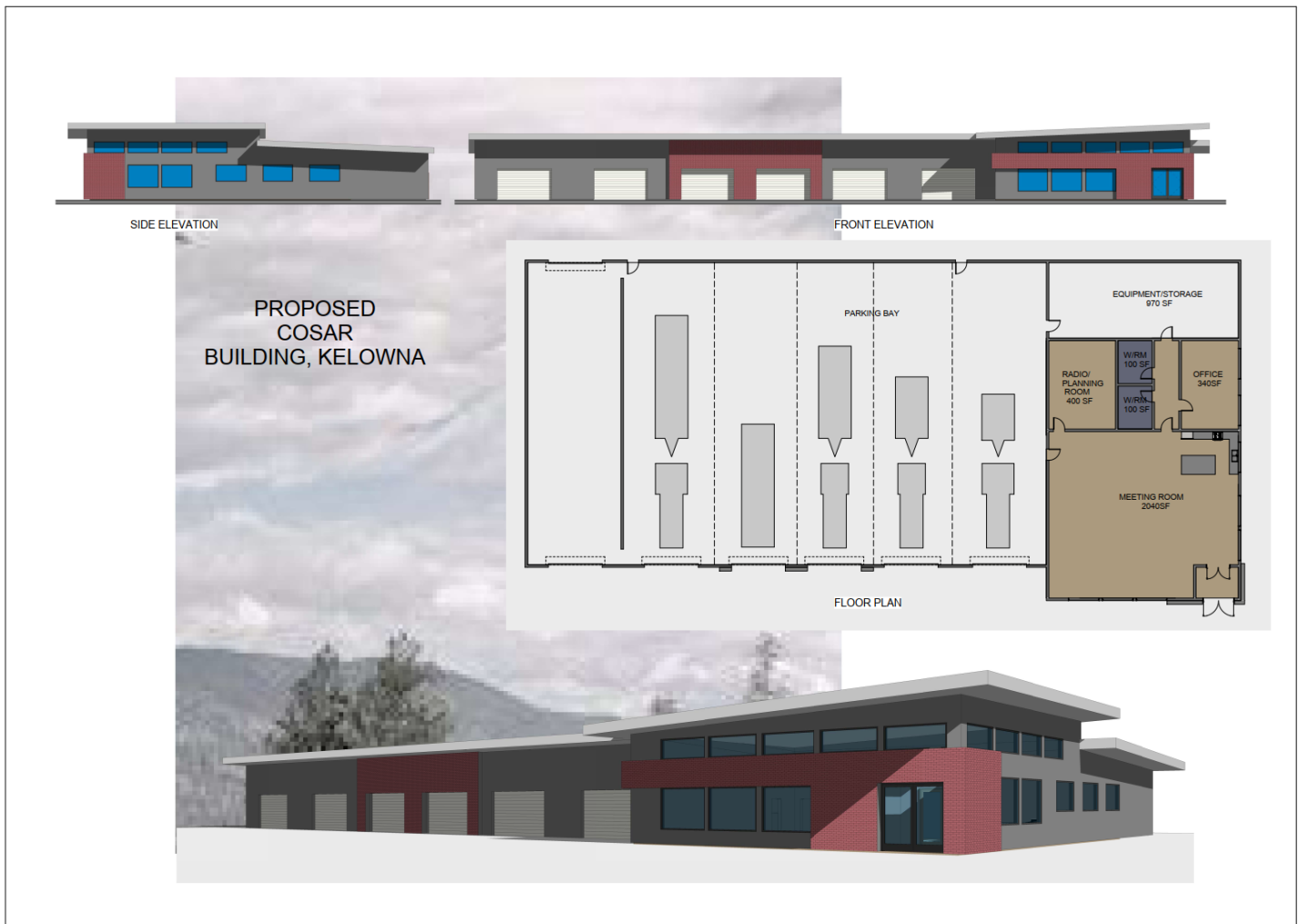
The following actions are recommended for the long term of 10 to 20 years:

1. Re-evaluate the future membership numbers and potential need for expansion.
2. Re-evaluate needs for future expansion on the site occupied at the time.

7.0 SCHEMATIC DESIGN

Point Design Studio in Kelowna prepared some optional schematic designs for a proposed new COSAR building that meets the requirements set out in the sections above. One design included eight bays and high glass walls for the main meeting room and another design included 6 bays and a more modest design for the building. The design used for the cost estimate included in the next section is the more modest design, but with 8 bays instead of only 6 in order to meet the current and future needs of the organization. The schematic design with 6 bays is set out in the Figure 7.1 below and is included in Appendix B.

Figure 7.1 Schematic Design for COSAR Operations Building



The building includes the following features:

- A meeting room and associated kitchen area of 2040 ft²
- An office of 340 ft²
- A radio/ planning room of 400 ft²
- Two washrooms of 100 ft² each
- An equipment storage room of 970 ft²

- The building above shows 6 bays, but a cost estimate was also provided for the same building with 8 bays

An alternative design was also prepared and it is set out in Appendix C, however a cost estimate for this design was not prepared, as we decided to proceed with a cost estimate for the more modest design above. The other design with a glass curtain wall is included in Appendix C for reference only.

8.0 COST ESTIMATE

A cost estimate for the more modest design with no curtain wall assemblies and 6 bays was prepared by LTA Consultants Inc. of Kelowna, and then we requested a revised cost estimate that included 8 bays on the more modest design. The cost estimate for the 8 bay design is set out in Table 8.1 below and included in detail in Appendix D. This is a class 'D' conceptual/opinion of probable costs estimate with a level of accuracy of -10% to +25%, 18 times out of 20.

Table 8.1 Cost Estimate for COSAR Operations Building (8 Bay Option)

CENTRAL OKANAGAN SEARCH & RESCUE (COSAR)		OPERATIONS BUILDING (8 BAY OPTION)		CONCEPTUAL ESTIMATE (R1)		
MAIN SUMMARY OF ESTIMATED PROJECT COSTS						
		Gross Floor Area	m ²	ft ²		
		Estimated Value	\$/m ²	\$/ft ²		
Description						
Net Building Cost		\$1,740,407	\$1,660.23	\$154		
Site Development		\$441,914	\$421.55	\$39		
Ancillary Work		\$0	\$0.00	\$0		
Design Contingency, Escalation Contingency and Construction Contingency Allowance		\$223,688	\$213.38	\$20		
ESTIMATED CONSTRUCTION COSTS (Excluding GST)		\$2,406,008	\$2,295.16	\$213		
GST	5.00%	Excluded	\$0.00	\$0		
ESTIMATED CONSTRUCTION COSTS (Excluding GST)		\$2,406,008	\$2,295.16	\$213		
SOFT COSTS						
Land Cost		<i>Excluded</i>	\$0.00	\$0		
Design Fees (Architect, Structural, Mechanical & Electrical)	6.00%	\$144,361	\$137.71	\$13		
Miscellaneous Consultants (Geotech, Civil, Landscaping Specialists)	3.00%	\$72,180	\$68.85	\$6		
Project Management Fees	5.00%	<i>Excluded</i>	\$0.00	\$0		
Building Permit Fees	1.10%	\$26,466	\$25.25	\$2		
Development Cost Charges - Specifically Excluded		<i>Excluded</i>	\$0.00	\$0		
Loose Furniture, Furnishings and Equipment - Specifically Excluded	0.00%	<i>Excluded</i>	\$0.00	\$0		
ESTIMATED SOFT COSTS (Excluding GST)		\$243,007	\$231.81	\$22		
GST	5.00%	Excluded	\$0.00	\$0		
ESTIMATED SOFT COSTS (Excluding GST)		\$243,007	\$231.81	\$22		
TOTAL PROJECT COSTS (Excluding GST)		\$2,906,458	\$2,772.56	\$258		

The cost estimate above for the 8 bay version of the building is \$2,906,458 with a cost of \$2,772.56 per m² and a cost of \$258 per ft².

The cost estimate for the 6 bay version of the building was \$2,510,452 with a cost of \$3,003.70 per m² and a cost of \$279 per ft². The 8 bay versions proves to more economical on a cost per square foot basis

than the 6 bay version as the costs per floor area for the bay space is less than the cost for the meeting room space.

For compiling the cost estimate LTA assumed the following:

“The new facility comprises a single storey wood framed building with a gross floor area of approximately 11,280ft² (1,048m²). We have assumed the building foundation will be comprised of concrete strip and pad footings, concrete foundation walls, and a concrete slab- on-grade. Our budget estimate includes for a wood framed roof structure with an allowance for structural steel in the larger roof span in the vehicle bays. We have allowed for load-bearing wood framed exterior wall construction with a combination of acrylic stucco and brick veneer finishes as detailed on the elevations. The roof finish has been measured with an insulated 2- ply SBS roofing membrane. We have allowed for wood framed partitions throughout the building with painted drywall finish. A fire rated demising wall has been included between the office area and vehicle bays. Further details regarding the anticipated interior finishes have been referenced in the detailed estimate. Mechanical systems include basic roof top units with limited zone control and basic thermostat control. Electrical systems will be basic and consistent with an industrial/commercial building of this type. No allowance for an emergency generator and essential power has been made.

A specific site has not yet been identified for the project. In the absence of specific site information, and for the purpose of this estimate, we have assumed a flat level site, with good bearing conditions. All ground improvement work, retaining walls and special foundations are specifically excluded. We have assumed that the site will be approximately 4,800m² in size. We have assumed asphalt parking areas, concrete sidewalks and aprons, on-site servicing, and landscaping. We have assumed that all services will be stubbed into the building lot ready for connection. All off-site utility and infrastructure upgrades are excluded.”

The following items are specifically excluded from the conceptual estimate:

- GST;
- Site Acquisition Costs;
- Rezoning Costs;
- Development Cost Charges;
- Course of Construction Insurance;
- Financing Costs;
- Forward Escalation/Market Condition Contingency Allowance;
- Effects on Materials Pricing due to Border Tariffs, Duties, and Trade Embargoes;
- Project Delays due to Supply Chain Issues and Civil Orders relating to the Covid-19 Pandemic;
- All Off-Site Servicing and Infrastructure Costs, including Bonding Costs;
- Demolition of Existing Building Structures;
- Special Foundations and Ground Improvement Costs;
- Removal and/or Remediation of Hazardous Materials;
- Temporary Accommodation/Portering/Relocation Costs;
- Emergency Power;
- Loose Furniture, Furnishings and Equipment;
- LEED™ certification and registration costs.

Appendix A

INVENTORY

Central Okanagan Search and Rescue

Printed by Doug Hufsmith 21st Jun 2020 9:30pm

<https://qr.ca.d4h.org/d6ce5>



		Kind #Ref	Manufacturer	Model	Serial	Barcode	Located in	Status
Communications								
<input type="checkbox"/>	1	Cellular Phones #Cell Phone - M Haug						✓
<input type="checkbox"/>	1	Radio Batteries #IC-PB210-17	Infinisia (Upstart Battery)	ICOM-BP210				✓
<input type="checkbox"/>	1	Radio Batteries #IC-PB210-18	Infinisia (Upstart Battery)	ICOM-BP210				✓
<input type="checkbox"/>	1	Radio Batteries #IC-PB210-19	Infinisia (Upstart Battery)	ICOM-BP210				✓
<input type="checkbox"/>	1	Radio Batteries #IC-PB210-20	Infinisia (Upstart Battery)	ICOM-BP210				✓
<input type="checkbox"/>	1	Radio Kit #K-IC-F30GS-02						✓
<input type="checkbox"/>	1	VHF Portable Radios #IC-F30GS-43	icom	F30-GS	4422076			✓
<input type="checkbox"/>	1	VHF Portable Radios #IC-F30GS-44	icom	F30-GS	4421901			✓
<input type="checkbox"/>	1	VHF Portable Radios #IC-F30GS-45	icom	F30-GS	4422072			✓
<input type="checkbox"/>	1	VHF Portable Radios #IC-F30GS-46	icom	F30-GS	4422000			✓
<input type="checkbox"/>	1	VHF Portable Radios #IC-F30GS-47	icom	F30-GS	4422567			✓
<input type="checkbox"/>	1	VHF Portable Radios #IC-F30GS-48	icom	F30-GS	44122075			✓
<input type="checkbox"/>	1	VHF Portable Radios #IC-F30GS-49	icom	F30-GS	4422676			✓
<input type="checkbox"/>	1	VHF Portable Radios #IC-F30GS-50	icom	F30-GS	4424099			✓
<input type="checkbox"/>	1	VHF Portable Radios #IC-F30GS-51	icom	F30-GS	4421753			✓
<input type="checkbox"/>	1	VHF Portable Radios #IC-F30GS-52	icom	F30-GS	4422071			✓
<input type="checkbox"/>	1	VHF Portable Radios #IC-F30GS-53	icom	F30-GS	4421754			✓
<input type="checkbox"/>	1	VHF Portable Radios #IC-F30GS-54	icom	F30-GS	4421996			✓
<input type="checkbox"/>	1	VHF Portable Radios #IC-F30GS-55	icom	F30-GS	4421217			✓
<input type="checkbox"/>	1	VHF Portable Radios #IC-F30GS-56	icom	F30-GS	4421908			✓
<input type="checkbox"/>	1	VHF Portable Radios #IC-F30GS-57	icom	F30-GS	4421666			✓
<input type="checkbox"/>	1	VHF Portable Radios #IC-F30GS-58	icom	F30-GS	4421796			✓
Computers/Printers								

<input type="checkbox"/>	1	Laptop Computers #TB-CF31-01	Panasonic	CF-31				✓
<input type="checkbox"/>	1	Laptop Computers #TB-CF31-02	Panasonic	CF-31				✓
<input type="checkbox"/>	1	Laptop Computers #TB-CF31-03	Panasonic	CF-31				✓
<input type="checkbox"/>	1	Laptop Computers #TB-CF31-04	Panasonic	CF-31				✓
<input type="checkbox"/>	1	Laptop Computers #TB-CF31-05	Panasonic	CF-31				✓
<input type="checkbox"/>	1	Laptop Computers #TB-CF31-06	Panasonic	CF-31				✓
First Aid								
<input type="checkbox"/>	1	Personal Deluxe First Aid Kit #PFA15						✓
<input type="checkbox"/>	1	Personal Deluxe First Aid Kit #PFA16						✓
<input type="checkbox"/>	1	Personal Deluxe First Aid Kit #PFA17						✓
<input type="checkbox"/>	1	Personal Deluxe First Aid Kit #PFA18						✓
<input type="checkbox"/>	1	Personal Deluxe First Aid Kit #PFA19						✓
<input type="checkbox"/>	1	Personal Deluxe First Aid Kit #PFA20						✓
<input type="checkbox"/>	1	Personal Deluxe First Aid Kit #PFA21						✓
<input type="checkbox"/>	1	Personal Deluxe First Aid Kit #PFA22						✓
<input type="checkbox"/>	1	Personal Deluxe First Aid Kit #PFA24						✓
<input type="checkbox"/>	1	Personal Deluxe First Aid Kit #PFA25						✓
<input type="checkbox"/>	1	Personal Deluxe First Aid Kit #PFA26						✓
<input type="checkbox"/>	1	Personal Deluxe First Aid Kit #PFA27						✓
<input type="checkbox"/>	1	Personal Deluxe First Aid Kit #PFA28						✓
<input type="checkbox"/>	1	Personal Deluxe First Aid Kit #PFA29						✓
<input type="checkbox"/>	1	Personal Deluxe First Aid Kit #PFA30						✓
<input type="checkbox"/>	1	Personal Deluxe First Aid Kit #PFS23						✓
Medical Rescue								
<input type="checkbox"/>	1	Litter Wheel #Basket Trailer						✓
<input type="checkbox"/>	1	Misc. Medical #000134						✓
Personal Protective Equipment (PPE)								
<input type="checkbox"/>	1	Misc PPE #000297 Bike Shorts	Fox	Ranger - Padded Shorts - Black				✓

Rope Rescue								
<input type="checkbox"/>	1	Bags #Load Line Bag Black						✓
<input type="checkbox"/>	1	Bags #Load line bag orange						✓
<input type="checkbox"/>	1	Bags #Load Line Bag Red						✓

Watercraft								
<input type="checkbox"/>	1	Boat, Inflatable, 50 HP #Boat-1 Titan			C20977B C			✓
<input type="checkbox"/>	1	Boat, Regular, Inboard or Outboard, 250 HP #Boat-2 Sweatman	Silver Streak	664lc	C20978 BC			✓

Boat, Regular, Inboard or Outboard, 250 HP #Boat-2 Sweatman

Communications								
<input type="checkbox"/>	1	Radio Kit #K-IC-F30GS-01					Boat, Regular, Inboard or Outboard, 250 HP #Boat-2 Sweatman	✓
<input type="checkbox"/>	1	Radio Kit #K-IC-F30GS-03					Boat, Regular, Inboard or Outboard, 250 HP #Boat-2 Sweatman	✓

Boat, Regular, Inboard or Outboard, 250 HP #Boat-2 Sweatman > Radio Kit #K-IC-F30GS-01

<input type="checkbox"/>	1	Misc. Communications Equipment #HM-F30GS-01	Otto	HM-F30GS			Radio Kit #K-IC-F30GS-01	✓
<input type="checkbox"/>	1	Misc. Communications Equipment #IC-BC119N-01	icom	IC-BC119N-01			Radio Kit #K-IC-F30GS-01	✓
<input type="checkbox"/>	1	Misc. Communications Equipment #IC-BC145a-01	icom	BC145a			Radio Kit #K-IC-F30GS-01	✓
<input type="checkbox"/>	1	Radio Batteries #IC-PB210-01	Infinisia (Upstart Battery)	ICOM-BP210			Radio Kit #K-IC-F30GS-01	✓
<input type="checkbox"/>	1	VHF Portable Radios #IC-F30GS-01	icom	F30-GS	4422678		Radio Kit #K-IC-F30GS-01	x

Boat, Regular, Inboard or Outboard, 250 HP #Boat-2 Sweatman > Radio Kit #K-IC-F30GS-03

<input type="checkbox"/>	1	Misc. Communications Equipment #HM-F30GS-03	Otto	HM-F30GS			Radio Kit #K-IC-F30GS-03	✓
<input type="checkbox"/>	1	Misc. Communications Equipment #IC-BC119N-03	icom	IC-BC119N-01			Radio Kit #K-IC-F30GS-03	✓
<input type="checkbox"/>	1	Misc. Communications Equipment #IC-BC145A-03	icom	BC145a			Radio Kit #K-IC-F30GS-03	✓
<input type="checkbox"/>	1	Radio Batteries #IC-PB210-03	Infinisia (Upstart Battery)	ICOM-BP210			Radio Kit #K-IC-F30GS-03	✓
<input type="checkbox"/>	1	VHF Portable Radios #IC-F30GS-03	icom	F30-GS			Radio Kit #K-IC-F30GS-03	✓

		Kind #Ref	Manufacturer	Model	Serial	Barcode	Located in	Status
--	--	-----------	--------------	-------	--------	---------	------------	--------

Malibu Marine - Downtown

Trailers

<input type="checkbox"/>	1	Boat Trailer #Trailer-4 sweatman	Highliner		2H9BT2P 04CR003 682			✓
--------------------------	---	-------------------------------------	-----------	--	---------------------------	--	--	---

		Kind #Ref	Manufacturer	Model	Serial	Barcode	Located in	Status
--	--	-----------	--------------	-------	--------	---------	------------	--------

Members Equipment								
--------------------------	--	--	--	--	--	--	--	--

Avalanche								
------------------	--	--	--	--	--	--	--	--

<input type="checkbox"/>	1	Skis #Tour Skis A Cormano						✓
<input type="checkbox"/>	1	Skis #Tour Skis A Rossworm						✓
<input type="checkbox"/>	1	Skis #Tour Skis B Trites						✓
<input type="checkbox"/>	1	Skis #Tour Skis D Zinz						✓
<input type="checkbox"/>	1	Skis #Tour Skis M March						✓
<input type="checkbox"/>	1	Skis #Tour Skis T Becker						✓
<input type="checkbox"/>	1	Snowshoes #1 Snowshoe B Stainsby						✓
<input type="checkbox"/>	1	Snowshoes #1 Snowshoe D Crawford	MSR	Lightning Ascent				✓
<input type="checkbox"/>	1	Snowshoes #1 Snowshoe D Zinz	MSR	Revo Ascent				✓
<input type="checkbox"/>	1	Snowshoes #2 Snowshoe D Crawford	MSR	Lightning Ascent				✓
<input type="checkbox"/>	1	Snowshoes #2 Snowshoe D Zinz	MSR	Revo Ascent				✓
<input type="checkbox"/>	1	Snowshoes #Snowshoe C Pachkowski						✓

Cameras/Optical								
------------------------	--	--	--	--	--	--	--	--

<input type="checkbox"/>	1	Drop Cameras (water) #100' underwater camera R Nowak						✓
<input type="checkbox"/>	1	Drop Cameras (water) #800' underwater camera R Nowak						✓

Communications								
-----------------------	--	--	--	--	--	--	--	--

<input type="checkbox"/>	1	Cellular Phones #Cell Phone - A Cormano						✓
<input type="checkbox"/>	1	Cellular Phones #Cell Phone - A Kneipp						✓
<input type="checkbox"/>	1	Cellular Phones #Cell Phone - A Rose						✓
<input type="checkbox"/>	1	Cellular Phones #Cell Phone - A Rossworm						✓
<input type="checkbox"/>	1	Cellular Phones #Cell Phone - B Andrews						✓
<input type="checkbox"/>	1	Cellular Phones #Cell Phone - B Coxon						✓
<input type="checkbox"/>	1	Cellular Phones #Cell Phone - B Stainsby						✓

<input type="checkbox"/>	1	Cellular Phones #Cell Phone - B Trites						✓
<input type="checkbox"/>	1	Cellular Phones #Cell Phone - C Block						✓
<input type="checkbox"/>	1	Cellular Phones #Cell Phone - C Pachkowski						✓
<input type="checkbox"/>	1	Cellular Phones #Cell Phone - C Rooy						✓
<input type="checkbox"/>	1	Cellular Phones #Cell Phone - D Buskermolen						✓
<input type="checkbox"/>	1	Cellular Phones #Cell phone - D Crawford						✓
<input type="checkbox"/>	1	Cellular Phones #Cell Phone - D Goodwin						✓
<input type="checkbox"/>	1	Cellular Phones #Cell phone - D Hufsmith						✓
<input type="checkbox"/>	1	Cellular Phones #Cell Phone - D Park						✓
<input type="checkbox"/>	1	Cellular Phones #Cell Phone - D Raesler						✓
<input type="checkbox"/>	1	Cellular Phones #Cell Phone - D Schlosser						✓
<input type="checkbox"/>	1	Cellular Phones #Cell phone - D Tresnich						✓
<input type="checkbox"/>	1	Cellular Phones #Cell phone - D Watson						✓
<input type="checkbox"/>	1	Cellular Phones #Cell Phone - D Zinz						✓
<input type="checkbox"/>	1	Cellular Phones #Cell Phone - E Henczel						✓
<input type="checkbox"/>	1	Cellular Phones #Cell phone - E Nowak						✓
<input type="checkbox"/>	1	Cellular Phones #Cell Phone - J Bedell						✓
<input type="checkbox"/>	1	Cellular Phones #Cell Phone - J LaRue						✓
<input type="checkbox"/>	1	Cellular Phones #Cell Phone - K Birnie						✓
<input type="checkbox"/>	1	Cellular Phones #Cell Phone - K Gretzinger						✓
<input type="checkbox"/>	1	Cellular Phones #Cell Phone - K LeRoux						✓
<input type="checkbox"/>	1	Cellular Phones #Cell Phone - L Quon						✓
<input type="checkbox"/>	1	Cellular Phones #Cell Phone - M Frigon						✓
<input type="checkbox"/>	1	Cellular Phones #Cell Phone - M Goertzen						✓
<input type="checkbox"/>	1	Cellular Phones #Cell Phone - M March						✓
<input type="checkbox"/>	1	Cellular Phones #Cell Phone - M Olsen						✓
<input type="checkbox"/>	1	Cellular Phones #Cell phone - P Rucker						✓

<input type="checkbox"/>	1	Cellular Phones #Cell Phone - R Anderson						✓
<input type="checkbox"/>	1	Cellular Phones #Cell phone - R Braun						✓
<input type="checkbox"/>	1	Cellular Phones #Cell Phone - R Jacobson						✓
<input type="checkbox"/>	1	Cellular Phones #Cell phone - R Nowak						✓
<input type="checkbox"/>	1	Cellular Phones #Cell Phone - S Bianchini						✓
<input type="checkbox"/>	1	Cellular Phones #Cell Phone - S Millard						✓
<input type="checkbox"/>	1	Cellular Phones #Cell Phone - S Sheppard						✓
<input type="checkbox"/>	1	Cellular Phones #Cell Phone - T Becker						✓
<input type="checkbox"/>	1	Cellular Phones #Cell Phone - T Campbell						✓
<input type="checkbox"/>	1	Cellular Phones #Cell Phone - T Downs						✓
<input type="checkbox"/>	1	Cellular Phones #Cell Phone - W Schredl						✓

Cycles

<input type="checkbox"/>	1	Bicycle #eBike Personal - A Cormano						✓
<input type="checkbox"/>	1	Bicycle #eBike Personal - B Stainsby	Giant	Full-E+1 SX Pro				✓
<input type="checkbox"/>	1	Bicycle #EBike Personal - D Watson	Giant	Full-E+1 SX Pro				✓
<input type="checkbox"/>	1	Bicycle #eBike Personal - K Gretzinger						✓
<input type="checkbox"/>	1	Bicycle #eBike Personal - M March						✓
<input type="checkbox"/>	1	Bicycle #Mountain Bike A Cormano						✓
<input type="checkbox"/>	1	Bicycle #Mountain Bike B Andrews	Kona					✓
<input type="checkbox"/>	1	Bicycle #Mountain Bike D Crawford						✓
<input type="checkbox"/>	1	Bicycle #Mountain Bike D Schlosser						✓
<input type="checkbox"/>	1	Bicycle #Mountain Bike D Schlosser 2						✓
<input type="checkbox"/>	1	Bicycle #Mountain Bike D Zinz	Cannondale	F5				✓
<input type="checkbox"/>	1	Bicycle #Mountain Bike E Henczel						✓
<input type="checkbox"/>	1	Bicycle #Mountain Bike E Nowak						✓
<input type="checkbox"/>	1	Bicycle #Mountain Bike J LaRue						✓
<input type="checkbox"/>	1	Bicycle #Mountain Bike M Frigon						✓
<input type="checkbox"/>	1	Bicycle #Mountain Bike M March						✓

<input type="checkbox"/>	1	Bicycle #Mountain Bike R Nowak						✓
Off-Road Vehicles								
<input type="checkbox"/>	1	ATV #ATV 400 D Schlosser						✓
<input type="checkbox"/>	1	ATV #ATV M Olsen						✓
<input type="checkbox"/>	1	ATV #Honda ATV A Cormano	Honda	unknown				✓
<input type="checkbox"/>	1	ATV #Honda ATV M March	Honda	unknown				✓
<input type="checkbox"/>	1	ATV #Honda Rubicon ATV A Kneipp	Honda	Rubicon				✓
<input type="checkbox"/>	1	ATV #Yamaha Grizzly ATV J LaRue	Yamaha	Grizzly				✓
Remote Operated Vehicle (ROV)								
<input type="checkbox"/>	1	Remote Operated Vehicle (ROV) #ROV R Nowak						✓
Snow Vehicles								
<input type="checkbox"/>	1	Snowmobiles #Snowmobile A Breitzkreutz	Polaris	800				✓
<input type="checkbox"/>	1	Snowmobiles #Snowmobile A Cormano	Polaris					✓
<input type="checkbox"/>	1	Snowmobiles #Snowmobile A Rossworm						✓
<input type="checkbox"/>	1	Snowmobiles #Snowmobile C Block	Ski-doo	850				✓
<input type="checkbox"/>	1	Snowmobiles #Snowmobile C Green	Polaris	800				✓
<input type="checkbox"/>	1	Snowmobiles #Snowmobile C Grindle						✓
<input type="checkbox"/>	1	Snowmobiles #Snowmobile C Rooy	Ski-doo	850				✓
<input type="checkbox"/>	1	Snowmobiles #Snowmobile C Zimmer						✓
<input type="checkbox"/>	1	Snowmobiles #Snowmobile D Bone	Ski-doo	800 Summit X				✓
<input type="checkbox"/>	1	Snowmobiles #Snowmobile D Schlosser						✓
<input type="checkbox"/>	1	Snowmobiles #Snowmobile G Dolman	Polaris	850				✓
<input type="checkbox"/>	1	Snowmobiles #Snowmobile J Swartz	Ski-doo	850				✓
<input type="checkbox"/>	1	Snowmobiles #Snowmobile Kevin Birnie	BRP	800 X Summit				✓
<input type="checkbox"/>	1	Snowmobiles #Snowmobile L Kirschner	Polaris	850				✓
<input type="checkbox"/>	1	Snowmobiles #Snowmobile M March	Polaris					✓
<input type="checkbox"/>	1	Snowmobiles #Snowmobile R Anderson	Ski-doo	800 Summit X				✓
<input type="checkbox"/>	1	Snowmobiles #Snowmobile S Millard						✓

<input type="checkbox"/>	1	Snowmobiles #Snowmobile T White	Ski-doo	Expedition 600				✓
<input type="checkbox"/>	1	Snowmobiles #Snowmobile W Dudych						✓
Sonar								
<input type="checkbox"/>	1	Side-scan (fixed) #Hull mounted side scan sonar R Nowak						✓
Trail Rider								
<input type="checkbox"/>	1	Trail Rider Adaptive Equipment #Trailrider - T Becker						✓
Trailers								
<input type="checkbox"/>	1	ATV/UTV Trailer #ATV Trailer A Kneipp						✓
<input type="checkbox"/>	1	ATV/UTV Trailer #ATV Trailer J LaRue						✓
<input type="checkbox"/>	1	ATV/UTV Trailer #ATV Trailer M Olsen						✓
<input type="checkbox"/>	1	ATV/UTV Trailer #Utility Trailer D Schlosser						✓
<input type="checkbox"/>	1	Boat Trailer #Trailer D Schlosser 35HP boat trailer						✓
<input type="checkbox"/>	1	Boat Trailer #Trailer D Zinz 14' Alum boat trailer	EZ loader					✓
<input type="checkbox"/>	1	Snowmobile Trailer #Snowmobile Trailer C Block						✓
<input type="checkbox"/>	1	Snowmobile Trailer #Snowmobile Trailer C Rooy						✓
<input type="checkbox"/>	1	Snowmobile Trailer #Snowmobile Trailer Kevin Birnie	Ski-doo	single axle trailer				✓
<input type="checkbox"/>	1	Snowmobile Trailer #Snowmobile Trailer R Anderson						✓
<input type="checkbox"/>	1	Snowmobile Trailer #Snowmobile Trailer W Dudych						✓
Watercraft								
<input type="checkbox"/>	1	Boat, Regular, Inboard or Outboard, 35 HP #Boat D Schlosser						✓
<input type="checkbox"/>	1	Boat, Regular, Inboard or Outboard, 9.9 HP #1 D Schlosser Aluminum						✓
<input type="checkbox"/>	1	Boat, Regular, Inboard or Outboard, 9.9 HP #1 D Zinz Aluminum	Princecraft	Springbok				✓
<input type="checkbox"/>	1	Boat, Regular, Inboard or Outboard, 90 HP #Personal 17' vessel R Nowak						✓
<input type="checkbox"/>	1	Kayak #1 Canoe D Crawford	Mad River	Explorer				✓

<input type="checkbox"/>	1	Kayak #1 Canoe D Schlosser						✓
<input type="checkbox"/>	1	Kayak #1 Canoe E Nowak						✓
<input type="checkbox"/>	1	Kayak #1 Kayak B. Stainsby						✓
<input type="checkbox"/>	1	Kayak #1 Kayak D Raesler	Hobei	Mirage Revolution				✓
<input type="checkbox"/>	1	Kayak #1 Kayak D Schlosser						✓
<input type="checkbox"/>	1	Kayak #1 Kayak E Henczel						✓
<input type="checkbox"/>	1	Kayak #1 Kayak J LaRue						✓
<input type="checkbox"/>	1	Kayak #1 Kayak K Birnie						✓
<input type="checkbox"/>	1	Kayak #1 Kayak K Gretzinger						✓
<input type="checkbox"/>	1	Kayak #1 Kayak P Rucker						✓
<input type="checkbox"/>	1	Kayak #1 Kayak R Braun						✓
<input type="checkbox"/>	1	Kayak #1 Unpowered Boat A Cormano						✓
<input type="checkbox"/>	1	Kayak #1 Unpowered Boat D Crawford						✓
<input type="checkbox"/>	1	Kayak #1 Unpowered boat D Zinz	Princecraft	Springbok				✓
<input type="checkbox"/>	1	Kayak #1 Unpowered Boat M Olsen						✓
<input type="checkbox"/>	1	Kayak #2 Canoe D Crawford	Old Town Tripper					✓
<input type="checkbox"/>	1	Kayak #2 Kayak D Schlosser						✓
<input type="checkbox"/>	1	Kayak #2 Kayak E Henczel						✓
<input type="checkbox"/>	1	Kayak #2 Kayak J LaRue						✓
<input type="checkbox"/>	1	Kayak #2 Kayak K Birnie						✓
<input type="checkbox"/>	1	Kayak #2 Kayak K Gretzinger						✓
<input type="checkbox"/>	1	Motor, Outboard #Electric Motor E Nowak						✓
<input type="checkbox"/>	1	Raft #Cat Raft B Coxon						✓
<input type="checkbox"/>	1	Raft #Frog Boat E Nowak						✓

		Kind #Ref	Manufacturer	Model	Serial	Barcode	Located in	Status
Radio Kit #K-IC-F30GS-02								
Communications								

<input type="checkbox"/>	1	Misc. Communications Equipment #HM-F30GS-02	Otto	HM-F30GS			Radio Kit #K-IC-F30GS-02	✓
<input type="checkbox"/>	1	Misc. Communications Equipment #IC-BC119N-02	icom	IC-BC119N-01			Radio Kit #K-IC-F30GS-02	✓
<input type="checkbox"/>	1	Misc. Communications Equipment #IC-BC145A-02	icom	BC145a			Radio Kit #K-IC-F30GS-02	✓
<input type="checkbox"/>	1	Radio Batteries #IC-PB210-02	Infinisia (Upstart Battery)	ICOM-BP210			Radio Kit #K-IC-F30GS-02	✓
<input type="checkbox"/>	1	VHF Portable Radios #IC-F30GS-02	icom	F30-GS	4422564		Radio Kit #K-IC-F30GS-02	✓

		Kind #Ref	Manufacturer	Model	Serial	Barcode	Located in	Status
--	--	-----------	--------------	-------	--------	---------	------------	--------

RDCO Office - KLO

Vehicles (conventional)

<input type="checkbox"/>	1	Command Truck #K3	International		1HTMZS KM2BJ31 5353			✓
--------------------------	---	-------------------	---------------	--	---------------------------	--	--	---

RDCO Office - KLO > Command Truck #K3

Computers/Printers

<input type="checkbox"/>	1	Desktop Computers #S1-MCC-COSAR-CA	intel	Nuc			Command Truck #K3	x
<input type="checkbox"/>	1	Desktop Computers #S2-MCC-COSAR-CA	intel	Nuc			Command Truck #K3	x

		Kind #Ref	Manufacturer	Model	Serial	Barcode	Located in	Status
--	--	-----------	--------------	-------	--------	---------	------------	--------

SAR Hall

Audio Visual Equipment

<input type="checkbox"/>	1	Projectors #Portable Projector	Epson	EX3260	X4HF920 1846			✓
--------------------------	---	--------------------------------	-------	--------	-----------------	--	--	---

Communications

<input type="checkbox"/>	1	ELT Trackers #ProFIND SAR DF						✓
<input type="checkbox"/>	1	Radio Kit #K-IC-F30GS-14						✓

Computers/Printers

<input type="checkbox"/>	1	Laptop Computers #1 Acer Aspire 3	ACER	Aspire 3 / A315-22-924K	NXHE8A A008008 004722 N00			✓
<input type="checkbox"/>	1	Laptop Computers #2 Acer Aspire 3	ACER	Aspire 3 / A315-22-924K	NXHE8A A008950 0165D4 S00			✓
<input type="checkbox"/>	1	Laptop Computers #3 Acer Aspire 3	ACER	Aspire 3 / A315-22-924K	NXHE8A A008949 03C684S 00			✓
<input type="checkbox"/>	1	Laptop Computers #4 Acer Aspire 3	ACER	Aspire 3 / A315-22-924K	NXHE8A A008950 0170E4S 00			✓

<input type="checkbox"/>	1	Laptop Computers #5 Acer Aspire 3	ACER	Aspire 3 / A315-22-924K	NXHE8A A008008 006702 N00			✓
<input type="checkbox"/>	1	Laptop Computers #6 Acer Aspire 3	ACER	Aspire 3 / A315-22-924K	NXHE8A A008008 0052D2 N00			✓
<input type="checkbox"/>	1	Laptop Computers #7 Acer Aspire 3	ACER	Aspire 3 / A315-22-924K	NXHE8A A008950 017124S 00			✓
Lighting								
<input type="checkbox"/>	1	Headlamps #10 Headlamp	Nite Rider	NR Pro 2200 Race				✓
<input type="checkbox"/>	1	Headlamps #11 Headlamp	Nite Rider	NR Pro 2200 Race				✓
<input type="checkbox"/>	1	Headlamps #12 Headlamp	Nite Rider	NR Pro 2200 Race				✓
<input type="checkbox"/>	1	Headlamps #13 Headlamp	Nite Rider	NR Pro 2200 Race				✓
<input type="checkbox"/>	1	Headlamps #15 Headlamp	Nite Rider	NR Pro 2200 Race				✓
<input type="checkbox"/>	1	Headlamps #2 Headlamp	Nite Rider	NR Pro 2200 Race				✓
<input type="checkbox"/>	1	Headlamps #7 Headlamp	Nite Rider	NR Pro 2200 Race				✓
<input type="checkbox"/>	1	Headlamps #8 Headlamp	Nite Rider	NR Pro 2200 Race				✓
<input type="checkbox"/>	1	Headlamps #9 Headlamp	Nite Rider	NR Pro 2200 Race				✓
Off-Road Vehicles								
<input type="checkbox"/>	1	ATV #ATV2						✓
<input type="checkbox"/>	1	ATV #ATV3						✓
<input type="checkbox"/>	1	ATV #ATV4						✓
<input type="checkbox"/>	1	ATV #ATV5						✓
<input type="checkbox"/>	1	ATV #ATV6						✓
<input type="checkbox"/>	1	UTV #UTV1	BRP	Defender HD10				✓
Personal Protective Equipment (PPE)								
<input type="checkbox"/>	1	Helmets #000297 Bike Helmet	Giro					✓
Trailers								
<input type="checkbox"/>	1	ATV/UTV Trailer #Trailer-1	Double a	Snow mobile				✓
<input type="checkbox"/>	1	ATV/UTV Trailer #Trailer-2	Double a	Snow mobile				✓
<input type="checkbox"/>	1	ATV/UTV Trailer #Trailer-6 old big deck	Trailex	Snowmobile Trailer	2S9SD2 920K092 7404			✓

<input type="checkbox"/>	1	ATV/UTV Trailer #Trailer-7	H&H	7x16' High Deck	5JWFF16 2XHN26 7579			✓
<input type="checkbox"/>	1	ATV/UTV Trailer #Trailer-8 New big trailer	H&H	Flat Deck	5JWFF26 28KN518 662			✓
<input type="checkbox"/>	1	Boat Trailer #Trailer-3 Titan	Calkins		1CXBT1 415LS01 0706			✓
Vehicles (conventional)								
<input type="checkbox"/>	1	Rescue Truck #K1	Ford	F550	1FD0X5 HT0HEC 26556			✓
<input type="checkbox"/>	1	Rescue Truck #K2	Ford	F350	1FTSW3 1L5XEF1 0956			✓
SAR Hall > ATV/UTV Trailer #Trailer-2								
Snow Vehicles								
<input type="checkbox"/>	1	Snowmobiles #Snowmobile-7	BRP	Summit 600			ATV/UTV Trailer #Trailer-2	✓
SAR Hall > ATV/UTV Trailer #Trailer-6 old big deck								
<input type="checkbox"/>	1	Snowmobiles #snowmobile - 12	BRP	Summit 850 165	2BPSCFK J2KV000 011		ATV/UTV Trailer #Trailer-6 old big deck	✓
<input type="checkbox"/>	1	Snowmobiles #Snowmobile-10	BRP	Summit 800R 163			ATV/UTV Trailer #Trailer-6 old big deck	✓
<input type="checkbox"/>	1	Snowmobiles #Snowmobile-11	BRP	Skandic WT 550F			ATV/UTV Trailer #Trailer-6 old big deck	✓
<input type="checkbox"/>	1	Snowmobiles #Snowmobile-8	BRP	Tundra Extreme 600 ETEC			ATV/UTV Trailer #Trailer-6 old big deck	✓
<input type="checkbox"/>	1	Snowmobiles #Snowmobile-9	BRP	Tundra Extreme 600 ETEC			ATV/UTV Trailer #Trailer-6 old big deck	✓
SAR Hall > Radio Kit #K-IC-F30GS-14								
Communications								
<input type="checkbox"/>	1	Misc. Communications Equipment #HM-F30GS- 14	Otto	HM-F30GS			Radio Kit #K-IC- F30GS-14	✓
<input type="checkbox"/>	1	Misc. Communications Equipment #IC-BC119N- 14	icom	IC-BC119N-01			Radio Kit #K-IC- F30GS-14	✓
<input type="checkbox"/>	1	Misc. Communications Equipment #IC-BC145A- 14	icom	BC145a			Radio Kit #K-IC- F30GS-14	✓
<input type="checkbox"/>	1	Radio Batteries #IC- PB210-14	Infinisia (Upstart Battery)	ICOM-BP210			Radio Kit #K-IC- F30GS-14	✓
<input type="checkbox"/>	1	VHF Portable Radios #IC- F30GS-14	icom	F30-GS	4422966		Radio Kit #K-IC- F30GS-14	✓
SAR Hall > Rescue Truck #K1								
<input type="checkbox"/>	1	Satellite Phones #SATPH02	MSAT				Rescue Truck #K1	✓
Gear Kits								

<input type="checkbox"/>	1	Hard Case #Large Yellow Hard Case					Rescue Truck #K1	✓
<input type="checkbox"/>	1	Hard Case #Yellow GPS Hard Case					Rescue Truck #K1	✓
GPS								
<input type="checkbox"/>	1	Hand-held #66-1 GPS	Garmin	66st	5R10110 52		Rescue Truck #K1	✓
<input type="checkbox"/>	1	Hand-held #66-10 GPS Handheld	Garmin	66st	5r10286 14	66-10	Rescue Truck #K1	✓
<input type="checkbox"/>	1	Hand-held #66-2 GPS	Garmin	66st	5R10097 77		Rescue Truck #K1	✓
<input type="checkbox"/>	1	Hand-held #66-3 GPS	Garmin	66st	SR10081 84		Rescue Truck #K1	✓
<input type="checkbox"/>	1	Hand-held #66-4 GPS	Garmin	66st	5R10100 18		Rescue Truck #K1	✓
<input type="checkbox"/>	1	Hand-held #66-5 GPS	Garmin	66st	SR10081 26		Rescue Truck #K1	✓
<input type="checkbox"/>	1	Hand-held #66-6 GPS	Garmin	66st	5R10285 25		Rescue Truck #K1	✓
<input type="checkbox"/>	1	Hand-held #66-7 GPS	Garmin	66st	SR10286 13		Rescue Truck #K1	✓
<input type="checkbox"/>	1	Hand-held #66-8 GPS	Garmin	66st	SR10286 23		Rescue Truck #K1	✓
<input type="checkbox"/>	1	Hand-held #66-9 GPS	Garmin	66st	5r10286 12		Rescue Truck #K1	✓
Lighting								
<input type="checkbox"/>	1	Scenelights (portable) #Remote Area Lighting 1	Pelican	9430 RALS			Rescue Truck #K1	✓
<input type="checkbox"/>	1	Scenelights (portable) #Remote Area Lighting 2	Pelican	9430 RALS			Rescue Truck #K1	✓
Medical Rescue								
<input type="checkbox"/>	1	AED #K1 AED #2	Zoll				Rescue Truck #K1	✓
<input type="checkbox"/>	1	Litters #SKED Rescue System	Skedco	Basic			Rescue Truck #K1	✓
<input type="checkbox"/>	1	Litters #Stretcher 1					Rescue Truck #K1	✓
<input type="checkbox"/>	1	Litters #Stretcher 2					Rescue Truck #K1	✓
<input type="checkbox"/>	1	Oxygen #Bottle 4					Rescue Truck #K1	✓
<input type="checkbox"/>	1	Trauma Kit #Trauma Kit 1					Rescue Truck #K1	✓
<input type="checkbox"/>	1	Trauma Kit #Trauma Kit 2					Rescue Truck #K1	✓
<input type="checkbox"/>	1	Vacuum Devices (Mattress/Splints) #KENDRIC SPLINT					Rescue Truck #K1	✓
<input type="checkbox"/>	1	Vacuum Devices (Mattress/Splints) #RedVac Adult	RedVac	Adult			Rescue Truck #K1	✓
<input type="checkbox"/>	1	Vacuum Devices (Mattress/Splints) #RedVac Child	RedVac	Child			Rescue Truck #K1	✓
Personal Protective Equipment (PPE)								

<input type="checkbox"/>	1	Helmets #000371 ATV/Sled small	Can-Am				Rescue Truck #K1	✓
<input type="checkbox"/>	1	Helmets #000372 ATV/Sled Large	Can-Am				Rescue Truck #K1	✓
<input type="checkbox"/>	1	Helmets #000373 ATV/Sled Xlarge	Can-Am				Rescue Truck #K1	✓
<input type="checkbox"/>	1	Helmets #000374 ATV/Sled Small	Can-Am				Rescue Truck #K1	✓
<input type="checkbox"/>	1	Helmets #000375 ATV/Sled Large	HJC				Rescue Truck #K1	✓
<input type="checkbox"/>	1	Helmets #000376 ATV/Sled XXXL	HJC				Rescue Truck #K1	✓
<input type="checkbox"/>	1	Helmets #000377 ATV/Sled XLarge	HJC				Rescue Truck #K1	✓

Rope Rescue

<input type="checkbox"/>	1	Bags #1 Gear Bag					Rescue Truck #K1	✓
<input type="checkbox"/>	1	Bags #1 Harness bag S-L					Rescue Truck #K1	✓
<input type="checkbox"/>	1	Bags #2 Gear Bag					Rescue Truck #K1	✓
<input type="checkbox"/>	1	Bags #2 Harness bag CMC 28-34"					Rescue Truck #K1	✓
<input type="checkbox"/>	1	Bags #2019 Back-Up Bag #1 Orange					Rescue Truck #K1	✓
<input type="checkbox"/>	1	Bags #2019 Back-Up Bag #2 Black					Rescue Truck #K1	✓
<input type="checkbox"/>	1	Bags #2019 Go Bag #1 Red					Rescue Truck #K1	✓
<input type="checkbox"/>	1	Bags #2019 Go Bag #2 Blue					Rescue Truck #K1	✓
<input type="checkbox"/>	1	Bags #2019 Grey Duffle Bag					Rescue Truck #K1	✓
<input type="checkbox"/>	1	Bags #2019 Harness Kit #1 Small					Rescue Truck #K1	✓
<input type="checkbox"/>	1	Bags #2019 Harness Kit #2 Small					Rescue Truck #K1	✓
<input type="checkbox"/>	1	Bags #2019 Harness Kit #3 Medium/Large					Rescue Truck #K1	✓
<input type="checkbox"/>	1	Bags #2019 Harness Kit #4 Medium/Large					Rescue Truck #K1	✓
<input type="checkbox"/>	1	Bags #2019 Harness Kit #5 Medium/Large					Rescue Truck #K1	✓
<input type="checkbox"/>	1	Bags #2019 Harness Kit #6 X-Large					Rescue Truck #K1	✓
<input type="checkbox"/>	1	Bags #2019 Harness Kit #7 X-Large					Rescue Truck #K1	✓
<input type="checkbox"/>	1	Bags #2019 Red Gear Bag					Rescue Truck #K1	✓
<input type="checkbox"/>	1	Bags #2019 Rope Bag #1 Blue					Rescue Truck #K1	✓
<input type="checkbox"/>	1	Bags #2019 Rope Bag #2 Orange					Rescue Truck #K1	✓
<input type="checkbox"/>	1	Bags #2019 Rope Bag #3 Black					Rescue Truck #K1	✓

<input type="checkbox"/>	1	Bags #3 Harness bag L-XXL					Rescue Truck #K1	✓
<input type="checkbox"/>	1	Bags #4 Harness bag S-L					Rescue Truck #K1	✓
<input type="checkbox"/>	1	Bags #5 Harness bag XS-S					Rescue Truck #K1	✓
<input type="checkbox"/>	1	Bags #6 Harness bag L-XXL					Rescue Truck #K1	✓
<input type="checkbox"/>	1	Bags #7 Harness bag S-L					Rescue Truck #K1	✓
<input type="checkbox"/>	1	Bags #edge protector bag					Rescue Truck #K1	✓
<input type="checkbox"/>	1	Edge Protection #1 Edge protector green					Rescue Truck #K1	✓
<input type="checkbox"/>	1	Edge Protection #1 edge protector roller					Rescue Truck #K1	✓
<input type="checkbox"/>	1	Edge Protection #2 Edge Protector green					Rescue Truck #K1	✓
<input type="checkbox"/>	1	Edge Protection #2 edge protector roller					Rescue Truck #K1	✓
<input type="checkbox"/>	1	Misc Hardware #gloves					Rescue Truck #K1	✓
<input type="checkbox"/>	1	Misc Hardware #tarps					Rescue Truck #K1	✓
<input type="checkbox"/>	1	Ropes #1 rope bag blue 300'					Rescue Truck #K1	✓
<input type="checkbox"/>	1	Ropes #2 rope bag red 300'					Rescue Truck #K1	✓
<input type="checkbox"/>	1	Ropes #3 rope bag red 300'					Rescue Truck #K1	✓
<input type="checkbox"/>	1	Ropes #4 rope bag black 300'					Rescue Truck #K1	✓

SAR Hall > Rescue Truck #K1 > Hard Case #Large Yellow Hard Case

Communications

<input type="checkbox"/>	1	Satellite Phones #SATPH01	Spot	Global Phone			Hard Case #Large Yellow Hard Case	✓
<input type="checkbox"/>	1	Satellite Trackers ('In Reach' etc.) #IR-01	Delorme	inReach	3002340 6033793 0		Hard Case #Large Yellow Hard Case	✓
<input type="checkbox"/>	1	Satellite Trackers ('In Reach' etc.) #IR-02	Delorme	inReach	3002340 6033193 0		Hard Case #Large Yellow Hard Case	✓
<input type="checkbox"/>	1	Satellite Trackers ('In Reach' etc.) #IR-03	Delorme	inReach	3002340 6023340 0		Hard Case #Large Yellow Hard Case	✓
<input type="checkbox"/>	1	Satellite Trackers ('In Reach' etc.) #IR-05	Garmin	inReach Explorer+	3004340 6365797 0		Hard Case #Large Yellow Hard Case	✓
<input type="checkbox"/>	1	Satellite Trackers ('In Reach' etc.) #IR-06	Garmin	inReach Explorer+	3004340 6365397 0		Hard Case #Large Yellow Hard Case	✓
<input type="checkbox"/>	1	Satellite Trackers ('In Reach' etc.) #IR-07	Garmin	inReach Explorer+	3004340 6365369 0		Hard Case #Large Yellow Hard Case	✓

<input type="checkbox"/>	1	Satellite Trackers ('In Reach' etc.) #IR-08	Garmin	inReach Explorer+	3004340 6385346 0		Hard Case #Large Yellow Hard Case	✓
--------------------------	---	---	--------	-------------------	-------------------------	--	-----------------------------------	---

Lighting

<input type="checkbox"/>	1	Scenelights (portable) #Handheld Scene Light 1	Brightsource				Hard Case #Large Yellow Hard Case	✓
<input type="checkbox"/>	1	Scenelights (portable) #Handheld Scene Light 2	Brightsource				Hard Case #Large Yellow Hard Case	✓
<input type="checkbox"/>	1	Scenelights (portable) #Handheld Scene Light 3	Brightsource				Hard Case #Large Yellow Hard Case	✓
<input type="checkbox"/>	1	Scenelights (portable) #Handheld Scene Light 4	Brightsource				Hard Case #Large Yellow Hard Case	✓
<input type="checkbox"/>	1	Scenelights (portable) #Handheld Scene Light 5	Brightsource				Hard Case #Large Yellow Hard Case	✓
<input type="checkbox"/>	1	Scenelights (portable) #Handheld Scene Light 6	Brightsource				Hard Case #Large Yellow Hard Case	✓

SAR Hall > Rescue Truck #K1 > Hard Case #Yellow GPS Hard Case

GPS

<input type="checkbox"/>	1	Hand-held #GPS01	Garmin	Oregon 450			Hard Case #Yellow GPS Hard Case	✓
<input type="checkbox"/>	1	Hand-held #GPS02	Garmin	Oregon 450			Hard Case #Yellow GPS Hard Case	✓
<input type="checkbox"/>	1	Hand-held #GPS03	Garmin	Oregon 450			Hard Case #Yellow GPS Hard Case	✓
<input type="checkbox"/>	1	Hand-held #GPS04	Garmin	Oregon 450			Hard Case #Yellow GPS Hard Case	✓
<input type="checkbox"/>	1	Hand-held #GPS05	Garmin	Oregon 450			Hard Case #Yellow GPS Hard Case	✓
<input type="checkbox"/>	1	Hand-held #GPS06	Garmin	Oregon 450			Hard Case #Yellow GPS Hard Case	✓
<input type="checkbox"/>	1	Hand-held #GPS07	Garmin	Oregon 450			Hard Case #Yellow GPS Hard Case	✓
<input type="checkbox"/>	1	Hand-held #GPS08	Garmin	Oregon 450			Hard Case #Yellow GPS Hard Case	✓
<input type="checkbox"/>	1	Hand-held #GPS09	Garmin	Oregon 450			Hard Case #Yellow GPS Hard Case	✓

SAR Hall > Rescue Truck #K2

Trail Rider

<input type="checkbox"/>	1	Trail Rider Adaptive Equipment #COSAR Trailrider					Rescue Truck #K2	✓
--------------------------	---	--	--	--	--	--	------------------	---

		Kind #Ref	Manufacturer	Model	Serial	Barcode	Located in	Status
--	--	-----------	--------------	-------	--------	---------	------------	--------

Adam Macasso

Communications

<input type="checkbox"/>	1	Radio Kit #K-IC-F30GS-12						✓
--------------------------	---	--------------------------	--	--	--	--	--	---

Adam Macasso > Radio Kit #K-IC-F30GS-12

<input type="checkbox"/>	1	Misc. Communications Equipment #HM-F30GS-12	Otto	HM-F30GS			Radio Kit #K-IC-F30GS-12	✓
--------------------------	---	---	------	----------	--	--	--------------------------	---

<input type="checkbox"/>	1	Misc. Communications Equipment #IC-BC119N-12	icom	IC-BC119N-01			Radio Kit #K-IC-F30GS-12	✓
<input type="checkbox"/>	1	Misc. Communications Equipment #IC-BC145A-12	icom	BC145a			Radio Kit #K-IC-F30GS-12	✓
<input type="checkbox"/>	1	Radio Batteries #IC-PB210-12	Infinisia (Upstart Battery)	ICOM-BP210			Radio Kit #K-IC-F30GS-12	✓
<input type="checkbox"/>	1	VHF Portable Radios #IC-F30GS-12	icom	F30-GS	4421313		Radio Kit #K-IC-F30GS-12	✓

		Kind #Ref	Manufacturer	Model	Serial	Barcode	Located in	Status
Amos Rossworm								
Cycles								
<input type="checkbox"/>	1	Bicycle #000533 Helmet	Giro					✓
<input type="checkbox"/>	1	Bicycle #544 Body Armour	GForm					✓
<input type="checkbox"/>	1	Bicycle #7 Giant Full-E +1 SX Pro	Giant	Full-E+1 SX Pro				✓
<input type="checkbox"/>	1	Bicycle #Radio 2						✓
Lighting								
<input type="checkbox"/>	1	Headlamps #6 Headlamp	Nite Rider	NR Pro 2200 Race				✓

		Kind #Ref	Manufacturer	Model	Serial	Barcode	Located in	Status
Andrea Johnson								
Computers/Printers								
<input type="checkbox"/>	1	Laptop Computers #8 Acer Aspire 3	ACER	Aspire 3 / A315-22-924K	NXHE8A A008008 03ACF2 N00			✓

		Kind #Ref	Manufacturer	Model	Serial	Barcode	Located in	Status
Brad Trites								
Communications								
<input type="checkbox"/>	1	Radio Kit #K-IC-F30GS-08						✓
Cycles								
<input type="checkbox"/>	1	Bicycle #000534 Helmet	Giro					✓
<input type="checkbox"/>	1	Bicycle #3 Giant Full-E +1 SX Pro	Giant	Full-E+1 SX Pro				✓
<input type="checkbox"/>	1	Bicycle #4 Giant Full-E +1 SX Pro	Giant	Full-E+1 SX Pro				✓
<input type="checkbox"/>	1	Bicycle #545 Body Armour	GForm					✓
<input type="checkbox"/>	1	Bicycle #Radio 3						✓
First Aid								

<input type="checkbox"/>	1	Personal Deluxe First Aid Kit #PFA12						✓
Lighting								
<input type="checkbox"/>	1	Headlamps #16 Headlamp	Nite Rider	NR Pro 2200 Race				✓
Brad Trites > Radio Kit #K-IC-F30GS-08								
Communications								
<input type="checkbox"/>	1	Misc. Communications Equipment #HM-F30GS-08	Otto	HM-F30GS			Radio Kit #K-IC-F30GS-08	✓
<input type="checkbox"/>	1	Misc. Communications Equipment #IC-BC119N-08	icom	IC-BC119N-01			Radio Kit #K-IC-F30GS-08	✓
<input type="checkbox"/>	1	Misc. Communications Equipment #IC-BC145A-08	icom	BC145a			Radio Kit #K-IC-F30GS-08	✓
<input type="checkbox"/>	1	Radio Batteries #IC-PB210-08	Infinisia (Upstart Battery)	ICOM-BP210			Radio Kit #K-IC-F30GS-08	✓
<input type="checkbox"/>	1	VHF Portable Radios #IC-F30GS-08	icom	F30-GS	4421242		Radio Kit #K-IC-F30GS-08	✓

		Kind #Ref	Manufacturer	Model	Serial	Barcode	Located in	Status
Brandon Coxon								
<input type="checkbox"/>	1	Radio Kit #K-IC-F30GS-10						✓
First Aid								
<input type="checkbox"/>	1	Personal Deluxe First Aid Kit #PFA02						✓
Brandon Coxon > Radio Kit #K-IC-F30GS-10								
Communications								
<input type="checkbox"/>	1	Misc. Communications Equipment #HM-F30GS-10	Otto	HM-F30GS			Radio Kit #K-IC-F30GS-10	✓
<input type="checkbox"/>	1	Misc. Communications Equipment #IC-BC119N-10	icom	IC-BC119N-01			Radio Kit #K-IC-F30GS-10	✓
<input type="checkbox"/>	1	Misc. Communications Equipment #IC-BC145A-10	icom	BC145a			Radio Kit #K-IC-F30GS-10	✓
<input type="checkbox"/>	1	Radio Batteries #IC-PB210-10	Infinisia (Upstart Battery)	ICOM-BP210			Radio Kit #K-IC-F30GS-10	✓
<input type="checkbox"/>	1	VHF Portable Radios #IC-F30GS-10	icom	F30-GS	4422619		Radio Kit #K-IC-F30GS-10	✓

		Kind #Ref	Manufacturer	Model	Serial	Barcode	Located in	Status
Brian Andrews								
<input type="checkbox"/>	1	Radio Kit #K-IC-F30GS-04						✓
Cycles								
<input type="checkbox"/>	1	Bicycle #000535 Helmet	Giro					✓

<input type="checkbox"/>	1	Bicycle #546 Body Armour	GForm					✓
<input type="checkbox"/>	1	Bicycle #Radio 4						✓

First Aid

<input type="checkbox"/>	1	Personal Deluxe First Aid Kit #PFA01						✓
--------------------------	---	--------------------------------------	--	--	--	--	--	---

Lighting

<input type="checkbox"/>	1	Headlamps #18	Nite Rider	NR Pro 2200 Race				✓
--------------------------	---	---------------	------------	------------------	--	--	--	---

Brian Andrews > Radio Kit #K-IC-F30GS-04

Communications

<input type="checkbox"/>	1	Misc. Communications Equipment #HM-F30GS-04	Otto	HM-F30GS			Radio Kit #K-IC-F30GS-04	✓
<input type="checkbox"/>	1	Misc. Communications Equipment #IC-BC119N-04	icom	IC-BC119N-01			Radio Kit #K-IC-F30GS-04	✓
<input type="checkbox"/>	1	Misc. Communications Equipment #IC-BC145A-04	icom	BC145a			Radio Kit #K-IC-F30GS-04	✓
<input type="checkbox"/>	1	Radio Batteries #IC-PB210-04	Infinisia (Upstart Battery)	ICOM-BP210			Radio Kit #K-IC-F30GS-04	✓
<input type="checkbox"/>	1	VHF Portable Radios #IC-F30GS-04	icom	F30-GS	4421518		Radio Kit #K-IC-F30GS-04	✓

		Kind #Ref	Manufacturer	Model	Serial	Barcode	Located in	Status
--	--	-----------	--------------	-------	--------	---------	------------	--------

Brian Stainsby

Cycles

<input type="checkbox"/>	1	Bicycle #000536 Helmet	Giro					✓
<input type="checkbox"/>	1	Bicycle #547 Body Armour	GForm					✓

		Kind #Ref	Manufacturer	Model	Serial	Barcode	Located in	Status
--	--	-----------	--------------	-------	--------	---------	------------	--------

Chris Jackson Fruetel

<input type="checkbox"/>	1	Bicycle #000537 Helmet	Giro					✓
<input type="checkbox"/>	1	Bicycle #548 Body Armour	GForm					✓

Lighting

<input type="checkbox"/>	1	Headlamps #5 Headlamp	Nite Rider	NR Pro 2200 Race				✓
--------------------------	---	-----------------------	------------	------------------	--	--	--	---

		Kind #Ref	Manufacturer	Model	Serial	Barcode	Located in	Status
--	--	-----------	--------------	-------	--------	---------	------------	--------

Dan Martynov

Cycles

<input type="checkbox"/>	1	Bicycle #000538 Helmet	Giro					✓
--------------------------	---	------------------------	------	--	--	--	--	---

<input type="checkbox"/>	1	Bicycle #549 Body Armour	GForm					✓
--------------------------	---	--------------------------	-------	--	--	--	--	---

Lighting								
<input type="checkbox"/>	1	Headlamps #14 Headlamp	Nite Rider	NR Pro 2200 Race				✓

		Kind #Ref	Manufacturer	Model	Serial	Barcode	Located in	Status
--	--	-----------	--------------	-------	--------	---------	------------	--------

Darcy Buskermolen								
Communications								
<input type="checkbox"/>	1	Satellite Trackers ('In Reach' etc.) #IR-04	Delorme	inReach	3002340 1160123 0			x

		Kind #Ref	Manufacturer	Model	Serial	Barcode	Located in	Status
--	--	-----------	--------------	-------	--------	---------	------------	--------

Darryl Park								
First Aid								
<input type="checkbox"/>	1	Personal Deluxe First Aid Kit #PFA09						✓

		Kind #Ref	Manufacturer	Model	Serial	Barcode	Located in	Status
--	--	-----------	--------------	-------	--------	---------	------------	--------

David Zinz								
Communications								
<input type="checkbox"/>	1	Radio Kit #K-IC-F30GS-09						✓

David Zinz > Radio Kit #K-IC-F30GS-09								
<input type="checkbox"/>	1	Misc. Communications Equipment #HM-F30GS-09	Otto	HM-F30GS			Radio Kit #K-IC-F30GS-09	✓
<input type="checkbox"/>	1	Misc. Communications Equipment #IC-BC119N-09	icom	IC-BC119N-01			Radio Kit #K-IC-F30GS-09	✓
<input type="checkbox"/>	1	Misc. Communications Equipment #IC-BC145A-09	icom	BC145a			Radio Kit #K-IC-F30GS-09	✓
<input type="checkbox"/>	1	Radio Batteries #IC-PB210-09	Infinisia (Upstart Battery)	ICOM-BP210			Radio Kit #K-IC-F30GS-09	✓
<input type="checkbox"/>	1	VHF Portable Radios #IC-F30GS-09	icom	F30-GS	4421735		Radio Kit #K-IC-F30GS-09	✓

		Kind #Ref	Manufacturer	Model	Serial	Barcode	Located in	Status
--	--	-----------	--------------	-------	--------	---------	------------	--------

Don Raesler								
First Aid								
<input type="checkbox"/>	1	Personal Deluxe First Aid Kit #PFA11						✓

		Kind #Ref	Manufacturer	Model	Serial	Barcode	Located in	Status
--	--	-----------	--------------	-------	--------	---------	------------	--------

Duncan Watson								
Communications								

<input type="checkbox"/>	1	Radio Kit #K-IC-F30GS-06						✓
Cycles								
<input type="checkbox"/>	1	Bicycle #000540 Helmet	Giro					✓
<input type="checkbox"/>	1	Bicycle #551 Body Armour	GForm					✓
<input type="checkbox"/>	1	Bicycle #Radio 6						✓
First Aid								
<input type="checkbox"/>	1	Personal Deluxe First Aid Kit #PFA13						✓
Duncan Watson > Radio Kit #K-IC-F30GS-06								
Communications								
<input type="checkbox"/>	1	Misc. Communications Equipment #HM-F30GS-06	Otto	HM-F30GS			Radio Kit #K-IC-F30GS-06	✓
<input type="checkbox"/>	1	Misc. Communications Equipment #IC-BC119N-06	icom	IC-BC119N-01			Radio Kit #K-IC-F30GS-06	✓
<input type="checkbox"/>	1	Misc. Communications Equipment #IC-BC145A-06	icom	BC145a			Radio Kit #K-IC-F30GS-06	✓
<input type="checkbox"/>	1	Radio Batteries #IC-PB210-06	Infinisia (Upstart Battery)	ICOM-BP210			Radio Kit #K-IC-F30GS-06	✓
<input type="checkbox"/>	1	VHF Portable Radios #IC-F30GS-06	icom	F30-GS	4421942		Radio Kit #K-IC-F30GS-06	✓

		Kind #Ref	Manufacturer	Model	Serial	Barcode	Located in	Status
Ed Henczel								
<input type="checkbox"/>	1	Radio Kit #K-IC-F30GS-15						✓
Cycles								
<input type="checkbox"/>	1	Bicycle #000539 Helmet	Giro					✓
<input type="checkbox"/>	1	Bicycle #2 Giant Full-E +1 SX Pro	Giant	Full-E+1 SX Pro				✓
<input type="checkbox"/>	1	Bicycle #5 Giant Full-E +1 SX Pro	Giant	Full-E+1 SX Pro				✓
<input type="checkbox"/>	1	Bicycle #550 Body Armour	GForm					✓
<input type="checkbox"/>	1	Bicycle #Radio 5						✓
Lighting								
<input type="checkbox"/>	1	Headlamps #17 Headlamp	Nite Rider	NR Pro 2200 Race				✓
Ed Henczel > Radio Kit #K-IC-F30GS-15								
Communications								
<input type="checkbox"/>	1	Misc. Communications Equipment #HM-F30GS-15	Otto	HM-F30GS			Radio Kit #K-IC-F30GS-15	✓

<input type="checkbox"/>	1	Misc. Communications Equipment #IC-BC119N-15	icom	IC-BC119N-01			Radio Kit #K-IC-F30GS-15	✓
<input type="checkbox"/>	1	Misc. Communications Equipment #IC-BC145A-15	icom	BC145a			Radio Kit #K-IC-F30GS-15	✓
<input type="checkbox"/>	1	Radio Batteries #IC-PB210-15	Infinisia (Upstart Battery)	ICOM-BP210			Radio Kit #K-IC-F30GS-15	✓
<input type="checkbox"/>	1	VHF Portable Radios #IC-F30GS-15	icom	F30-GS	4421760		Radio Kit #K-IC-F30GS-15	✓

		Kind #Ref	Manufacturer	Model	Serial	Barcode	Located in	Status
Ephraim Nowak								
First Aid								
<input type="checkbox"/>	1	Personal Deluxe First Aid Kit #PFA07						✓

		Kind #Ref	Manufacturer	Model	Serial	Barcode	Located in	Status
Jay Blackwell								
Cycles								
<input type="checkbox"/>	1	Bicycle #000543 Helmet	Giro					✓
Lighting								
<input type="checkbox"/>	1	Headlamps #3 Headlamp	Nite Rider	NR Pro 2200 Race				✓

		Kind #Ref	Manufacturer	Model	Serial	Barcode	Located in	Status
Jordan Larue								
Communications								
<input type="checkbox"/>	1	Radio Kit #K-IC-F30GS-07						✓
Cycles								
<input type="checkbox"/>	1	Bicycle #000541 Helmet	Giro					✓
<input type="checkbox"/>	1	Bicycle #552 Body Armour	GForm					✓
<input type="checkbox"/>	1	Bicycle #6 Giant Full-E +1 SX Pro	Giant	Full-E+1 SX Pro				✓
Jordan Larue > Radio Kit #K-IC-F30GS-07								
Communications								
<input type="checkbox"/>	1	Misc. Communications Equipment #HM-F30GS-07	Otto	HM-F30GS			Radio Kit #K-IC-F30GS-07	✓
<input type="checkbox"/>	1	Misc. Communications Equipment #IC-BC119N-07	icom	IC-BC119N-01			Radio Kit #K-IC-F30GS-07	✓
<input type="checkbox"/>	1	Misc. Communications Equipment #IC-BC145A-07	icom	BC145a			Radio Kit #K-IC-F30GS-07	✓
<input type="checkbox"/>	1	Radio Batteries #IC-PB210-07	Infinisia (Upstart Battery)	ICOM-BP210			Radio Kit #K-IC-F30GS-07	✓

<input type="checkbox"/>	1	VHF Portable Radios #IC-F30GS-07	icom	F30-GS	4421949		Radio Kit #K-IC-F30GS-07	✓
--------------------------	---	----------------------------------	------	--------	---------	--	--------------------------	---

		Kind #Ref	Manufacturer	Model	Serial	Barcode	Located in	Status
--	--	-----------	--------------	-------	--------	---------	------------	--------

Jordan Taylor Peterson

Cycles

<input type="checkbox"/>	1	Bicycle #Radio 7						✓
--------------------------	---	------------------	--	--	--	--	--	---

		Kind #Ref	Manufacturer	Model	Serial	Barcode	Located in	Status
--	--	-----------	--------------	-------	--------	---------	------------	--------

Karen Gretzinger

<input type="checkbox"/>	1	Bicycle #000532 Helmet	Giro					✓
<input type="checkbox"/>	1	Bicycle #Radio 1						✓

First Aid

<input type="checkbox"/>	1	Personal Deluxe First Aid Kit #PFA05						✓
--------------------------	---	--------------------------------------	--	--	--	--	--	---

		Kind #Ref	Manufacturer	Model	Serial	Barcode	Located in	Status
--	--	-----------	--------------	-------	--------	---------	------------	--------

Kevin Birnie

Cycles

<input type="checkbox"/>	1	Bicycle #Radio 8						✓
--------------------------	---	------------------	--	--	--	--	--	---

Lighting

<input type="checkbox"/>	1	Headlamps #4 Headlamp	Nite Rider	NR Pro 2200 Race				✓
--------------------------	---	-----------------------	------------	------------------	--	--	--	---

		Kind #Ref	Manufacturer	Model	Serial	Barcode	Located in	Status
--	--	-----------	--------------	-------	--------	---------	------------	--------

Kevin Haggerty

Cycles

<input type="checkbox"/>	1	Bicycle #000542 Helmet	Giro					✓
<input type="checkbox"/>	1	Bicycle #553 Body Armour	GForm					✓

Lighting

<input type="checkbox"/>	1	Headlamps #1 Headlamp	Nite Rider	NR Pro 2200 Race				✓
--------------------------	---	-----------------------	------------	------------------	--	--	--	---

		Kind #Ref	Manufacturer	Model	Serial	Barcode	Located in	Status
--	--	-----------	--------------	-------	--------	---------	------------	--------

Linda Quon

First Aid

<input type="checkbox"/>	1	Personal Deluxe First Aid Kit #PFA10						✓
--------------------------	---	--------------------------------------	--	--	--	--	--	---

		Kind #Ref	Manufacturer	Model	Serial	Barcode	Located in	Status
--	--	-----------	--------------	-------	--------	---------	------------	--------

Marc Olsen								
Communications								
<input type="checkbox"/>	1	Radio Kit #K-IC-F30GS-13						✓
Marc Olsen > Radio Kit #K-IC-F30GS-13								
<input type="checkbox"/>	1	Misc. Communications Equipment #HM-F30GS-13	Otto	HM-F30GS			Radio Kit #K-IC-F30GS-13	✓
<input type="checkbox"/>	1	Misc. Communications Equipment #IC-BC119N-13	icom	IC-BC119N-01			Radio Kit #K-IC-F30GS-13	✓
<input type="checkbox"/>	1	Misc. Communications Equipment #IC-BC145A-13	icom	BC145a			Radio Kit #K-IC-F30GS-13	✓
<input type="checkbox"/>	1	Radio Batteries #IC-PB210-13	Infinisia (Upstart Battery)	ICOM-BP210			Radio Kit #K-IC-F30GS-13	✓
<input type="checkbox"/>	1	VHF Portable Radios #IC-F30GS-13	icom	F30-GS	4421869		Radio Kit #K-IC-F30GS-13	✓

		Kind #Ref	Manufacturer	Model	Serial	Barcode	Located in	Status
Michelle Frigon								
First Aid								
<input type="checkbox"/>	1	Personal Deluxe First Aid Kit #PFA04						✓

		Kind #Ref	Manufacturer	Model	Serial	Barcode	Located in	Status
Raphael Nowak								
<input type="checkbox"/>	1	Personal Deluxe First Aid Kit #PFA08						✓

		Kind #Ref	Manufacturer	Model	Serial	Barcode	Located in	Status
Rob Braun								
Communications								
<input type="checkbox"/>	1	Radio Kit #K-IC-F30GS-16						✓
First Aid								
<input type="checkbox"/>	1	Personal Deluxe First Aid Kit #PFA03						✓

Rob Braun > Radio Kit #K-IC-F30GS-16								
Communications								
<input type="checkbox"/>	1	Misc. Communications Equipment #HM-F30GS-16	Otto	HM-F30GS			Radio Kit #K-IC-F30GS-16	✓
<input type="checkbox"/>	1	Misc. Communications Equipment #IC-BC119N-16	icom	IC-BC119N-01			Radio Kit #K-IC-F30GS-16	✓
<input type="checkbox"/>	1	Misc. Communications Equipment #IC-BC145A-16	icom	BC145a			Radio Kit #K-IC-F30GS-16	✓
<input type="checkbox"/>	1	Radio Batteries #IC-PB210-16	Infinisia (Upstart Battery)	ICOM-BP210			Radio Kit #K-IC-F30GS-16	✓

<input type="checkbox"/>	1	VHF Portable Radios #IC-F30GS-16	icom	F30-GS	4421315		Radio Kit #K-IC-F30GS-16	✓
--------------------------	---	----------------------------------	------	--------	---------	--	--------------------------	---

		Kind #Ref	Manufacturer	Model	Serial	Barcode	Located in	Status
--	--	-----------	--------------	-------	--------	---------	------------	--------

Ross Jacobson

First Aid

<input type="checkbox"/>	1	Personal Deluxe First Aid Kit #PFA06						✓
--------------------------	---	--------------------------------------	--	--	--	--	--	---

		Kind #Ref	Manufacturer	Model	Serial	Barcode	Located in	Status
--	--	-----------	--------------	-------	--------	---------	------------	--------

Terry Downs

Cycles

<input type="checkbox"/>	1	Bicycle #1 Giant Full-E +1 SX Pro	Giant	Full-E+1 SX Pro	GA1872383			✓
--------------------------	---	-----------------------------------	-------	-----------------	-----------	--	--	---

		Kind #Ref	Manufacturer	Model	Serial	Barcode	Located in	Status
--	--	-----------	--------------	-------	--------	---------	------------	--------

Troy Campbell

Communications

<input type="checkbox"/>	1	Radio Kit #K-IC-F30GS-05						✓
--------------------------	---	--------------------------	--	--	--	--	--	---

First Aid

<input type="checkbox"/>	1	Personal Deluxe First Aid Kit #PFA14						✓
--------------------------	---	--------------------------------------	--	--	--	--	--	---

Troy Campbell > Radio Kit #K-IC-F30GS-05

Communications

<input type="checkbox"/>	1	Misc. Communications Equipment #HM-F30GS-05	Otto	HM-F30GS			Radio Kit #K-IC-F30GS-05	✓
<input type="checkbox"/>	1	Misc. Communications Equipment #IC-BC119N-05	icom	IC-BC119N-01			Radio Kit #K-IC-F30GS-05	✓
<input type="checkbox"/>	1	Misc. Communications Equipment #IC-BC145A-05	icom	BC145a			Radio Kit #K-IC-F30GS-05	✓
<input type="checkbox"/>	1	Radio Batteries #IC-PB210-05	Infinisia (Upstart Battery)	ICOM-BP210			Radio Kit #K-IC-F30GS-05	✓
<input type="checkbox"/>	1	VHF Portable Radios #IC-F30GS-05	icom	F30-GS	4422367		Radio Kit #K-IC-F30GS-05	✓

		Kind #Ref	Manufacturer	Model	Serial	Barcode	Located in	Status
--	--	-----------	--------------	-------	--------	---------	------------	--------

Wally Schredl

<input type="checkbox"/>	1	Radio Kit #K-IC-F30GS-11						✓
--------------------------	---	--------------------------	--	--	--	--	--	---

Wally Schredl > Radio Kit #K-IC-F30GS-11

<input type="checkbox"/>	1	Misc. Communications Equipment #HM-F30GS-11	Otto	HM-F30GS			Radio Kit #K-IC-F30GS-11	✓
<input type="checkbox"/>	1	Misc. Communications Equipment #IC-BC119N-11	icom	IC-BC119N-01			Radio Kit #K-IC-F30GS-11	✓

<input type="checkbox"/>	1	Misc. Communications Equipment #IC-BC145A-11	icom	BC145a			Radio Kit #K-IC-F30GS-11	✓
<input type="checkbox"/>	1	Radio Batteries #IC-PB210-11	Infinisia (Upstart Battery)	ICOM-BP210			Radio Kit #K-IC-F30GS-11	✓
<input type="checkbox"/>	1	VHF Portable Radios #IC-F30GS-11	icom	F30-GS	4422613		Radio Kit #K-IC-F30GS-11	✓

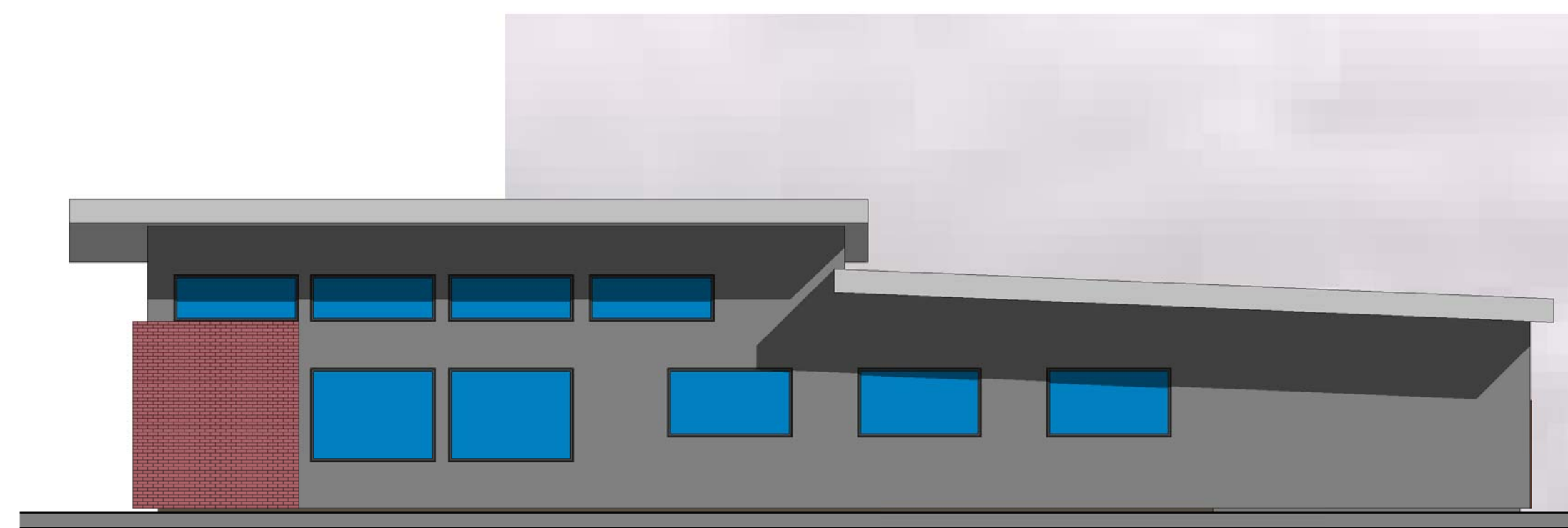
Signed:

Date:

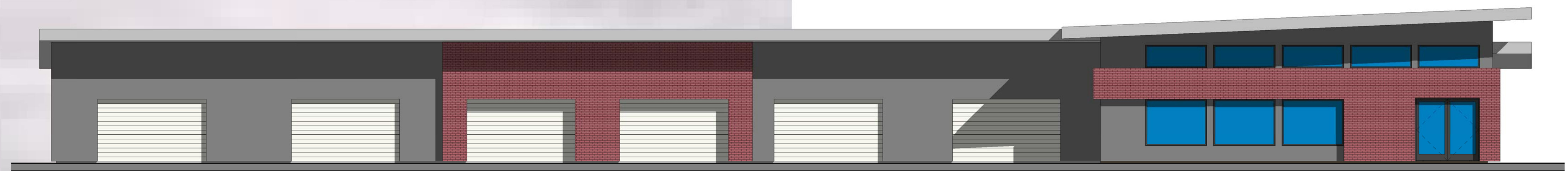
.....

.....

Appendix B

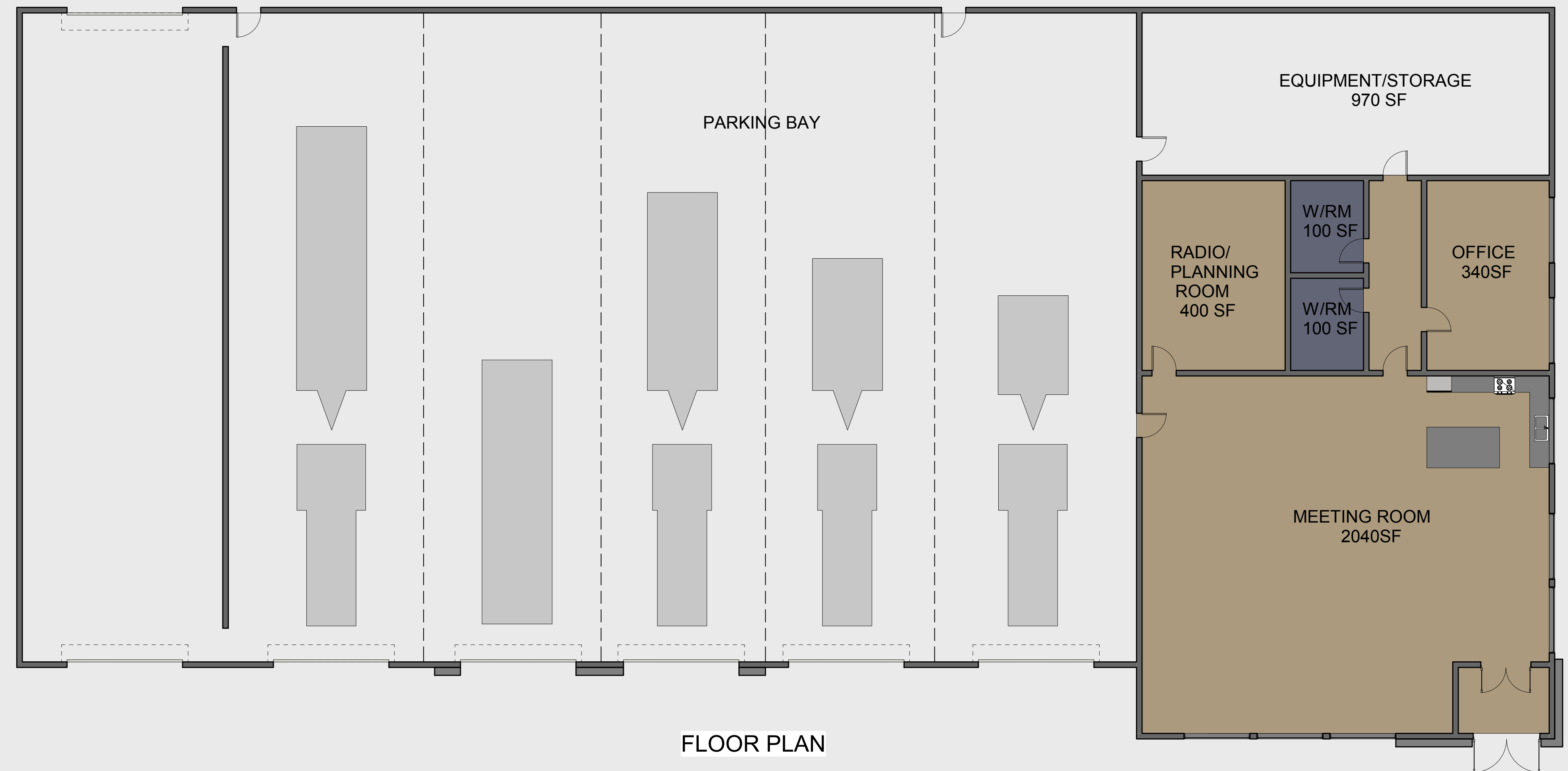


SIDE ELEVATION



FRONT ELEVATION

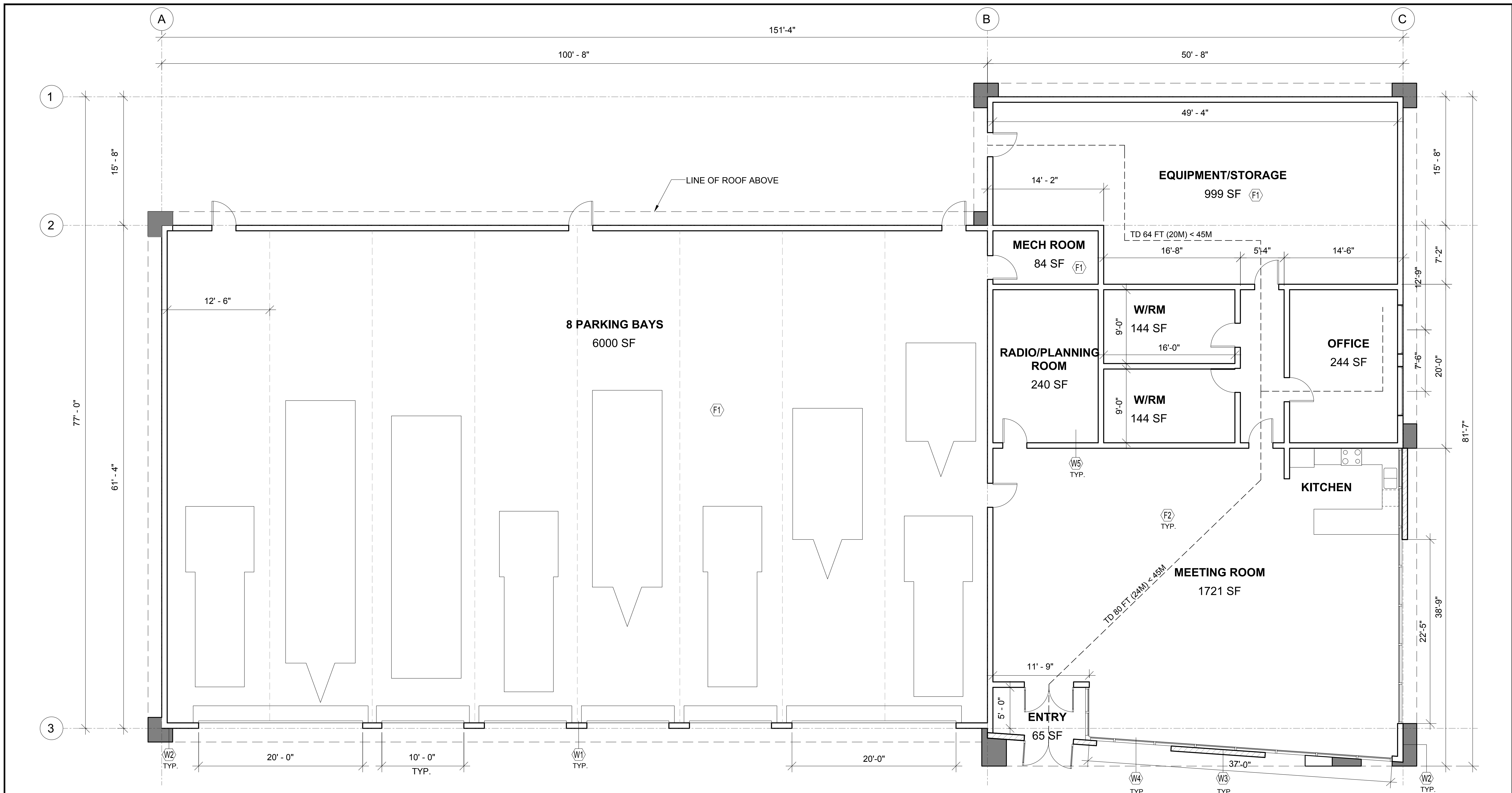
PROPOSED
COSAR
BUILDING, KELOWNA



Appendix C

COSAR
BUILDING, KELOWNA





PROPOSED PRELIMINARY ASSEMBLIES

<p>EXTERIOR WALLS BELOW GRADE CONCRETE FOUNDATION WALLS - R 17 CONCRETE FOOTING COMPACTED GRANULAR BASE</p>	<p>EXTERIOR WALLS CONCRETE WALL PANELS 5/8" TYPE X GWB 6" STL STUDS @ MAX. 16" O.C. BATT INSULATION - R20 5/8" TYPE X GWB ROOM FINISH - PAINT</p>	<p>EXTERIOR WALLS PERFORATED METAL WALL PANELS 5/8" TYPE X GWB STL STUDS @ MAX. 16" O.C.</p>	<p>INTERIOR WALLS BELOW GRADE CONCRETE FOUNDATION WALLS CONCRETE FOOTING COMPACTED GRANULAR BASE</p>	<p>INTERIOR WALLS ROOM FINISH - PAINT 5/8" TYPE X GWB 6" STL STUDS @ MAX. 16" O.C. 5/8" TYPE X GWB ROOM FINISH - PAINT</p>	<p>SLAB ON GRADE LIQUID WATERPROOFING SYSTEM SLOPE MIN 2% REINFORCED CONCRETE SLAB 6 MIL POLYETHYLENE GROUND SHEET COMPACTED GRANULAR BASE</p>	<p>SLAB ON GRADE POLISHED CONCRETE REINFORCED CONCRETE SLAB 6 MIL POLYETHYLENE GROUND SHEET COMPACTED GRANULAR BASE</p>	<p>FLAT ROOF/ SLOP ROOF RUBBER ROOFING MEMBRANE MIN SLOP 2% OSB RIGID INSULATION PRE-ENGINEERED WOOD TRUSS/ROOF STRUCTURE BLOWN-IN LOOSE FILL GLASS FIBRE INSULATION R-40</p>
---	---	--	--	--	--	---	---

1 FLOOR PLAN
3/16" = 1'-0"

NOTE:
BUILDING IS SPRINKLERED THROUGHOUT

CEILING - EXPOSED, TO BE PAINTED
ACC WASHROOMS:
FLOOR - TILE
WALL - PAINTED
DROP CEILING - PAINTED

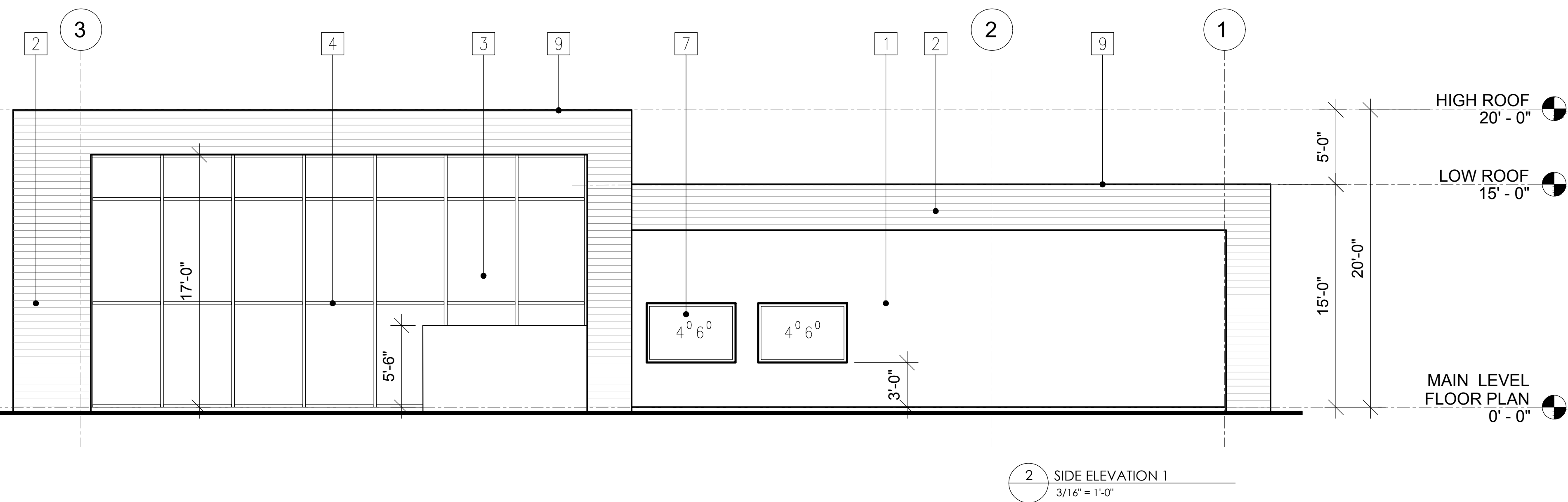
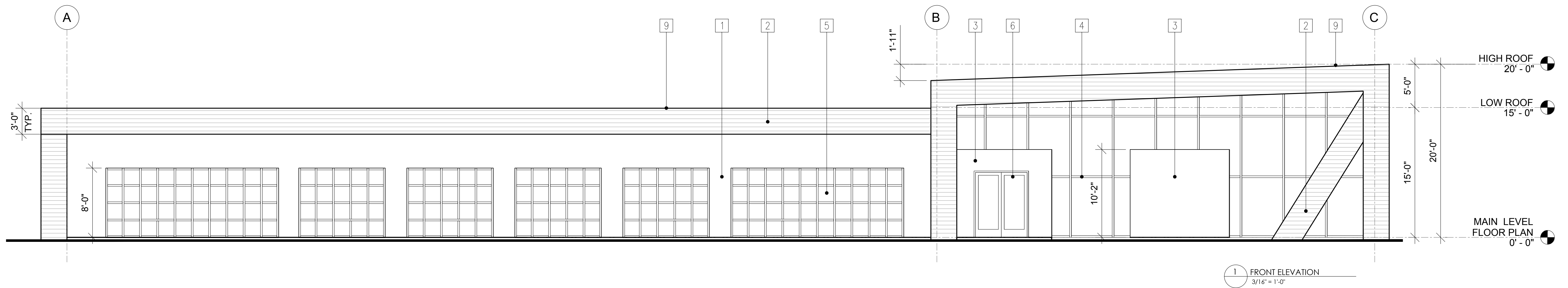
FOR CONSTRUCTION
BUDGET ESTIMATE ONLY

PRELIMINARY 28 OCT 2020

POINT DESIGN STUDIO LTD
778-227-6213
pointdesignstudio.ca

TITLE: FLOOR PLAN, ASSEMBLIES
PROJECT: COSAR BUILDING, KELOWNA

A01



KEY TO MATERIALS	
1	CONCRETE WALL PANELS
2	PERFORATED METAL PANELS FOR WALL & SOFFIT
3	WOODEN WALL PANELS
4	ALUMINUM STORE FRONT GLAZING FRAMING
5	GARAGE DOOR - METAL/TEMPERED GLASS
6	ENTRY DOOR - ALUMINUM/TEMPERED GLASS
7	METAL FRAME WINDOW
8	METAL WOOD
9	ASPHALT ROOF

FOR CONSTRUCTION
BUDGET ESTIMATE ONLY

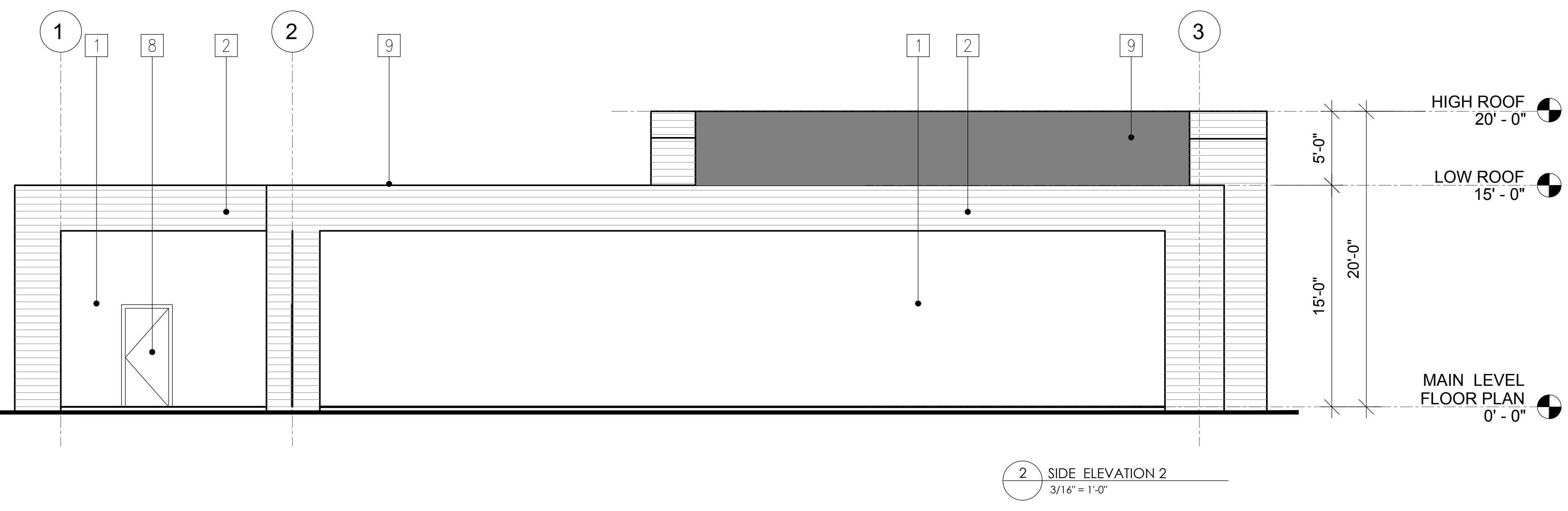
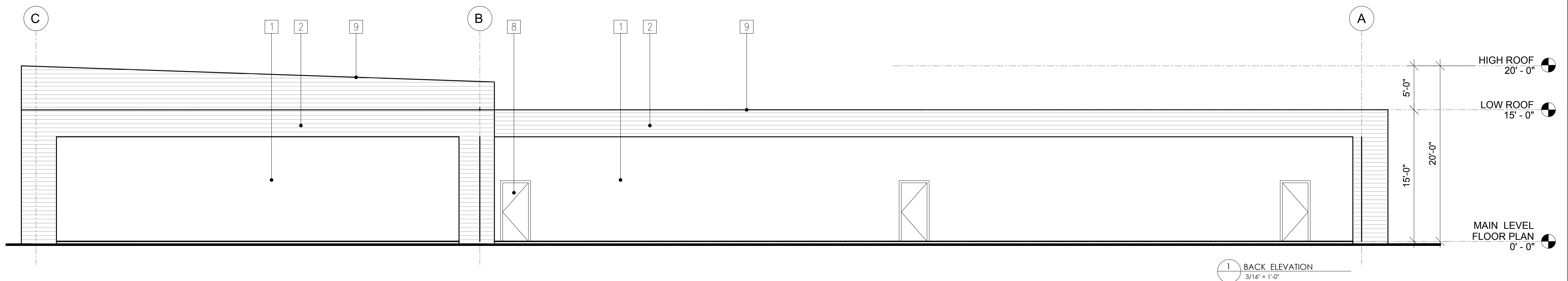
PRELIMINARY 28 OCT 2020

POINT DESIGN STUDIO LTD

778-227-6213
pointdesignstudio.ca

TITLE: BUILDING ELEVATIONS
PROJECT: COSAR BUILDING, KELOWNA

A02



KEY TO MATERIALS

1	CONCRETE WALL PANELS
2	PERFORATED METAL PANELS FOR WALL & SOFFIT
3	WOODEN WALL PANELS
4	ALUMINUM STORE FRONT GLAZING FRAMING
5	GARAGE DOOR - METAL/TEMPERED GLASS
6	ENTRY DOOR - ALUMINUM/TEMPERED GLASS
7	METAL FRAME WINDOW
8	METAL WOOD
9	ASPHALT ROOF

Appendix D



**CENTRAL OKANAGAN
SEARCH & RESCUE (COSAR)
OPERATIONS BUILDING
KELOWNA, BC**

**CLASS 'D' CONCEPTUAL ESTIMATE
(REVISION 01)**

December 11th, 2020

LTA Consultants Inc

Professional Quantity Surveyors
& Construction Cost Consultants
905 – 1708 Dolphin Avenue
Kelowna, BC V1Y 9S4

T: 250-868-8800

F: 888-371-1458

E: lyndon@ltaconsultants.com

W: www.ltaconsultants.com

Prepared for:

Mr. Joel Short
Senior Planner / Principal

URBAN SYSTEMS

304 – 1353 Ellis Street

Kelowna, BC V1Y 1Z9

TABLE OF CONTENTS

INTRODUCTION.....3

DOCUMENTATION & INFORMATION.....3

BASIS OF THE ESTIMATE.....4-5

MAIN COST SUMMARY.....A1

ELEMENTAL SUMMARY & ESTIMATE DETAIL.....A2–A53

INTRODUCTION

Central Okanagan Search & Rescue (COSAR) are planning to construct a new facility for their operations based out of Kelowna, BC.

The new facility comprises a single storey wood framed building with a gross floor area of approximately 11,280ft² (1,048m²). We have assumed the building foundation will be comprised of concrete strip and pad footings, concrete foundation walls, and a concrete slab-on-grade. Our budget estimate includes for a wood framed roof structure with an allowance for structural steel in the larger roof span in the vehicle bays. We have allowed for load-bearing wood framed exterior wall construction with a combination of acrylic stucco and brick veneer finishes as detailed on the elevations. The roof finish has been measured with an insulated 2-ply SBS roofing membrane. We have allowed for wood framed partitions throughout the building with painted drywall finish. A fire rated demising wall has been included between the office area and vehicle bays. Further details regarding the anticipated interior finishes have been referenced in the detailed estimate. Mechanical systems include basic roof top units with limited zone control and basic thermostat control. Electrical systems will be basic and consistent with an industrial/commercial building of this type. No allowance for an emergency generator and essential power has been made.

A specific site has not yet been identified for the project. In the absence of specific site information, and for the purpose of this estimate, we have assumed a flat level site, with good bearing conditions. *All ground improvement work, retaining walls and special foundations are **specifically excluded**.* We have assumed that the site will be approximately 4,800m² in size. We have assumed asphalt parking areas, concrete sidewalks and aprons, on-site servicing, and landscaping. We have assumed that all services will be stubbed into the building lot ready for connection. *All off-site utility and infrastructure upgrades are **excluded**.*

LTA Consultants Inc. (LTA) has been retained by Central Okanagan Search & Rescue (COSAR) to prepare a class 'D' conceptual estimate for the project costs for the search and rescue facility.

This conceptual estimate includes a 'Main Summary of Estimated Construction Costs' (Page A1), identifying the estimated hard costs and project soft costs for the new facility. Please note that Land Costs, Development Cost Charges, Loose Furniture, Furnishings and Equipment, and Forward Escalation Contingency costs are **specifically excluded** from this class 'D' conceptual estimate. *Please refer to the detailed list of items that are **specifically excluded** from this estimate under the 'Excluded Items' section for further information.*

DOCUMENTATION & INFORMATION

We have been provided with a copy of the following documentation for the preparation of this conceptual estimate:

- Preliminary Architectural Drawings A01, A02, and A03 (Issued for Construction Budget Estimate Only) dated October 28th, 2020, prepared by Point Design Studio Ltd.;

- Proposed COSAR Building, Kelowna, supplemental floor plan, elevations, and rendering of the reduced building size;
- Building Needs Analysis (DRAFT) prepared by Urban Systems dated October 14th, 2020;

As the project is at the preliminary planning stage, no engineering design consultant drawings and information is available.

BASIS OF THE ESTIMATE

We have reviewed the drawings and documentation provided and discussed the project with the client to establish the scope and extent of the work. This revised estimate is based on the original building design with no curtain wall assemblies; however, we have now allowed for a larger building with 8 vehicle bays in lieu of the original 6 bays measured in our first estimate.

From the documentation and information provided, we have prepared the enclosed conceptual estimate by measuring quantities from the drawings and applying unit rates to the measured work elements. Where no information was available, we have made reasonable assumptions and stated this in the backup to this report.

Project Procurement and Pricing

Pricing for this project is based upon our opinion of current November 2019 standard construction industry market costs for this size and type of project in Kelowna, BC. It has been assumed that the project will be procured on a fixed stipulated 'lump sum' contract basis, from a competitive bidding field of at least four competent General Contractors. It has also been assumed that a competitive bidding field of at least three competent sub-contractors for each trade will tender for the work and that there will be no 'sole source' bids.

This estimate attempts to establish a fair and reasonable price for the proposed work and is not intended to be a prediction of 'low bid'.

Contingency Reserves

A Design Contingency Allowance of 5% has been included in this Estimate. This allowance is a reserve of funds in the Construction Estimate to cover unforeseen items during the design phase that do not change the project scope. This allowance is ultimately absorbed into the designed and quantified work as more detailed information becomes available and is, therefore, normally reduced to zero at the tender stage.

An Escalation Contingency Allowance of 0% has been included in this Estimate. This allowance is a reserve of funds in the Construction Estimate to cover price increases in construction costs due to changes in market conditions between the date the estimate is prepared and the date the tender is called. ***Refer to the comments in the introduction to this report. Tender date currently unknown.***

A Construction Contingency of 5% is included in this Estimate. This allowance is a reserve of funds in the Construction Estimate to cover unforeseen items during the construction period

which will result in Change Orders. This contingency is not intended to cover changes in the scope of the work.

Market Conditions

The current Construction Market in British Columbia is very active to the extent that many projects, at the tender stage, are suffering from a lack of interest from General Contractors as well as Sub-trades. Lack of competitive interest will have an effect on the tendered bottom line and will very likely not reflect the estimated value contained in this report.

Level of Accuracy

This is a class 'D' conceptual/opinion of probable costs estimate with a level of accuracy of -10% to +25%, 18 times out of 20.

GST

GST has been ***specifically excluded*** from this conceptual estimate.

Excluded Items

The following items are specifically excluded from this conceptual estimate:

- GST;
- Site Acquisition Costs;
- Rezoning Costs;
- Development Cost Charges;
- Course of Construction Insurance;
- Financing Costs;
- Forward Escalation/Market Condition Contingency Allowance;
- Effects on Materials Pricing due to Border Tariffs, Duties, and Trade Embargoes;
- Project Delays due to Supply Chain Issues and Civil Orders relating to the Covid-19 Pandemic;
- All Off-Site Servicing and Infrastructure Costs, including Bonding Costs;
- Demolition of Existing Building Structures;
- Special Foundations and Ground Improvement Costs;
- Removal and/or Remediation of Hazardous Materials;
- Temporary Accommodation/Portering/Relocation Costs;
- Emergency Power;
- Loose Furniture, Furnishings and Equipment;
- LEED™ certification and registration costs.

**MAIN SUMMARY OF ESTIMATED
PROJECT COSTS**

MAIN SUMMARY OF ESTIMATED PROJECT COSTS			
Description	Gross Floor Area	m ²	ft ²
		Estimated Value	\$/m ²
Net Building Cost	\$1,740,407	\$1,660.23	\$154
Site Development	\$441,914	\$421.55	\$39
Ancillary Work	\$0	\$0.00	\$0
Design Contingency, Escalation Contingency and Construction Contingency Allowance	\$223,688	\$213.38	\$20
ESTIMATED CONSTRUCTION COSTS (Excluding GST)	\$2,406,008	\$2,295.16	\$213
GST 5.00%	Excluded	\$0.00	\$0
ESTIMATED CONSTRUCTION COSTS (Excluding GST)	\$2,406,008	\$2,295.16	\$213
<u>SOFT COSTS</u>			
Land Cost	<i>Excluded</i>	\$0.00	\$0
Design Fees (Architect, Structural, Mechanical & Electrical) 6.00%	\$144,361	\$137.71	\$13
Miscellaneous Consultants (Geotech, Civil, Landscaping Specialists) 3.00%	\$72,180	\$68.85	\$6
Project Management Fees 5.00%	<i>Excluded</i>	\$0.00	\$0
Building Permit Fees 1.10%	\$26,466	\$25.25	\$2
Development Cost Charges - Specifically Excluded	<i>Excluded</i>	\$0.00	\$0
Loose Furniture, Furnishings and Equipment - Specifically Excluded 0.00%	<i>Excluded</i>	\$0.00	\$0
ESTIMATED SOFT COSTS (Excluding GST)	\$243,007	\$231.81	\$22
GST 5.00%	Excluded	\$0.00	\$0
ESTIMATED SOFT COSTS (Excluding GST)	\$243,007	\$231.81	\$22
TOTAL PROJECT COSTS (Excluding GST)	\$2,906,458	\$2,772.56	\$258

**ELEMENTAL SUMMARY
& ESTIMATE DETAIL**

ELEMENTAL COST PLAN								
Project Number: 2091			GFA: 1,048 m ²					
Name: COSAR Building			GFA: 11,284 ft ²					
Site: <i>Kelowna, BC</i>								
Date: 11-Dec-20								
Element	Element Quantity		Unit Rate	Element Value	Total	\$/m ²	\$/m ²	%
A1 SUBSTRUCTURE					\$100,886		\$96.24	5.26%
A111 Standard Foundations	836	m ²	\$82.12	\$68,651		\$65.49		
A112 Special Foundations	0	m ²	\$0.00	\$0		\$0.00		
A12 Basement Excavation	836	m ²	\$38.56	\$32,235		\$30.75		
A2 STRUCTURE					\$402,804		\$384.25	20.99%
A21 Lowest Floor Construction	813	m ²	\$183.84	\$149,460		\$142.57		
A221 Upper Floor Construction	0	m ²	\$0.00	\$0		\$0.00		
A222 Stair Construction	0	No	\$0.00	\$0		\$0.00		
A23 Roof Construction	915	m ²	\$276.88	\$253,344		\$241.67		
A3 EXTERIOR ENCLOSURE					\$370,470		\$353.40	19.31%
A312 Structural Walls Below Grade	0	m ²	\$0.00	\$0		\$0.00		
A321 Walls Above Grade	441	m ²	\$427.88	\$188,694		\$180.00		
A322 Structural Walls Above Grade	0	m ²	\$0.00	\$0		\$0.00		
A323 Curtain Walls	0	m ²	\$0.00	\$0		\$0.00		
A331 Windows & Louvers	29	m ²	\$326.85	\$9,479		\$9.04		
A332 Glazed Screens	0	No	\$0.00	\$0		\$0.00		
A333 Doors	11	lvs	\$3,827.27	\$42,100		\$40.16		
A341 Roofing	915	m ²	\$130.96	\$119,832		\$114.31		
A342 Skylights	0	m ²	\$0.00	\$0		\$0.00		
A35 Projections	78	m ²	\$132.88	\$10,365		\$9.89		
B1 PARTITIONS					\$56,815		\$54.20	2.96%
B111 Fixed Partitions	262	m ²	\$149.10	\$39,065		\$37.27		
B112 Moveable Partitions	0	No	\$0.00	\$0		\$0.00		
B113 Structural Partitions	0	m ²	\$0.00	\$0		\$0.00		
B12 Doors	10	lvs	\$1,775.00	\$17,750		\$16.93		
B2 FINISHES					\$56,038		\$53.46	2.92%
B21 Floor Finishes	811	m ²	\$33.70	\$27,333		\$26.07		
B22 Ceiling Finishes	811	m ²	\$18.17	\$14,734		\$14.06		
B23 Wall Finishes	964	m ²	\$14.49	\$13,970		\$13.33		
B3 FITTINGS & EQUIPMENT					\$48,358		\$46.13	2.52%
B311 Metals	836	m ²	\$19.19	\$16,041		\$15.30		
B312 Millwork	836	m ²	\$28.49	\$23,817		\$22.72		
B313 Specialties	836	m ²	\$2.99	\$2,500		\$2.38		
B32 Equipment	836	m ²	\$7.18	\$6,000		\$5.72		
B331 Elevators	0	no	\$0.00	\$0		\$0.00		
B332 Escalators & Moving Walkways	0	no	\$0.00	\$0		\$0.00		
B333 Materials Handling Systems	0	no	\$0.00	\$0		\$0.00		
C1 MECHANICAL					\$242,358		\$231.19	12.63%
C11 Plumbing and Drainage	836	m ²	\$68.97	\$57,656		\$55.00		
C12 Fire Protection	836	m ²	\$1.50	\$1,250		\$1.19		
C13 HVAC	836	m ²	\$219.44	\$183,452		\$175.00		
C14 Controls	836	m ²	\$0.00	\$0		\$0.00		
C2 ELECTRICAL					\$214,901		\$205.00	11.20%
C21 Service & Distribution	836	m ²	\$43.89	\$36,690		\$35.00		
C22 Lighting, Devices & Heating	836	m ²	\$150.47	\$125,795		\$120.00		
C23 System & Ancillaries	836	m ²	\$62.70	\$52,415		\$50.00		
Z1 GENERAL REQUIREMENTS & FEES					\$247,777		\$236.36	12.91%
Z11 General Requirements	8	mths	\$18,657.87	\$149,263		\$142.39		
Z12 Fee	6.00%			\$98,514		\$93.98		
Sub-total Net Building Cost					\$1,740,407		\$1,660.23	90.70%
Z21 Design Contingency Allowance	5.00%				\$87,020		\$83.01	4.54%
Z22 Escalation Contingency Allowance	0.00%				\$0		\$0.00	0.00%
Z23 Construction Contingency Allowance	5.00%				\$91,371		\$87.16	4.76%
NET BUILDING COST					\$1,918,798		\$1,830.40	100.00%

Project Number:		2091			GFA:		1,048 m ²		
Name:		COSAR Building			GFA:		11,284 ft ²		
Site:		Kelowna, BC							
Date:		11-Dec-20							
Element		Element Quantity		Unit Rate	Element Value	Total	\$/m ²	\$/m ²	%
D1 SITE DEVELOPMENT						\$379,000		\$361.54	
D111	Preparation	4,800	m ²	\$12.33	\$59,200		\$56.47		
D112	Hard Surfaces	3,680	m ²	\$48.21	\$177,400		\$169.23		
D113	Improvements	4,800	m ²	\$3.21	\$15,400		\$14.69		
D114	Landscaping	284	m ²	\$52.82	\$15,000		\$14.31		
D12	Mechanical Site Services	4,800	m ²	\$17.08	\$82,000		\$78.22		
D13	Electrical Site Services	4,800	m ²	\$6.25	\$30,000		\$28.62		
Z1 GENERAL REQUIREMENTS & FEES						\$62,914		\$60.02	
Z11	General Requirements	3	mths	\$12,633.33	\$37,900		\$36.15		
Z12	Fee	6.00%			\$25,014		\$23.86		
Sub-total Site Development						\$441,914		\$421.55	
Z21	Design Contingency Allowance	5.00%				\$22,096		\$21.08	
Z22	Escalation Contingency Allowance	0.00%				\$0		\$0.00	
Z23	Construction Contingency Allowance	5.00%				\$23,200		\$22.13	
SITE DEVELOPMENT						\$487,210		\$464.76	
D2 ANCILLARY WORK						\$0		\$0.00	
D211	Demolition	0	m ²	\$0.00	\$0		\$0.00		
D212	Hazardous Materials	0	m ²	\$0.00	\$0		\$0.00		
D22	Alterations	0	m ²	\$0.00	\$0		\$0.00		
Z1 GENERAL REQUIREMENTS & FEES						\$0		\$0.00	
Z11	General Requirements	0	mths	\$0.00	\$0		\$0.00		
Z12	Fee	6.00%			\$0		\$0.00		
Sub-total Ancillary Work						\$0		\$0.00	
Z21	Design Contingency Allowance	5.00%				\$0		\$0.00	
Z22	Escalation Contingency Allowance	0.00%				\$0		\$0.00	
Z23	Construction Contingency Allowance	5.00%				\$0		\$0.00	
ANCILLARY WORK						\$0		\$0.00	
CONSTRUCTION COST (Excluding GST)						\$2,406,008		\$2,295.16	
GST		5.00%				Excluded		\$0.00	
CONSTRUCTION COST (Including GST)						\$2,406,008		\$2,295.16	

Code	Description	Quantity	Unit	Rate	Extension
<u>A1 SUBSTRUCTURE</u>					
<u>A111 STANDARD FOUNDATIONS</u>					
	Perimeter strip footing; assumed 600mm x 250mm; including excavation, concrete, formwork, reinforcing steel and backfill	151	m	164.76	\$24,911.57
	Interior strip footing; assumed 600mm x 250mm; including excavation, concrete, formwork, reinforcing steel and backfill	18	m	164.76	\$3,032.16
	Interior pad footing; assumed 1500mm x 1500mm x 300mm thickness; including excavation, concrete, formwork, reinforcing steel and backfill	4	No	692.64	\$2,770.57
	Perimeter foundation wall; 200mm thickness; including concrete, formwork, reinforcing steel, damproofing and rigid insulation	92	m ²	324.85	\$29,912.46
	Interior foundation wall; 200mm thickness; including concrete, formwork, reinforcing steel, damproofing and rigid insulation	11	m ²	269.85	\$3,024.42
	Miscellaneous foundations - allowance	1	l/s	5,000.00	\$5,000.00
	Perimeter weeping tile - not required	151	m	0.00	\$0.00
<u>TOTAL - A111 STANDARD FOUNDATIONS</u>					\$68,651.18

Code	Description	Quantity	Unit	Rate	Extension
	<u>A1 SUBSTRUCTURE</u>				
	<u>A112 SPECIAL FOUNDATIONS</u>				
	Not applicable				\$0.00
	<u>TOTAL - A112 SPECIAL FOUNDATIONS</u>				\$0.00

Code	Description	Quantity	Unit	Rate	Extension
<u>A1 SUBSTRUCTURE</u>					
<u>ALL BASEMENT EXCAVATION</u>					
	Excavate to reduce levels; 450mm depth; dispose	472	m ³	25.00	\$11,793.32
	Filling to make up levels; 300mm depth; imported structural fill material; compacted in lifts	314	m ³	65.00	\$20,441.76
	Ground water clearance - allowance	1	l/s	Excluded	\$0.00
<u>TOTAL - ALL BASEMENT EXCAVATION</u>					<u>\$32,235.09</u>

Code	Description	Quantity	Unit	Rate	Extension
<u>A2 STRUCTURE</u>					
<u>A21 LOWEST FLOOR CONSTRUCTION</u>					
	Slab on grade; 152mm thick concrete, power trowel finish, perimeter formwork, control joints, saw cuts, reinforcing steel, poly vapour barrier, Radon layer and 150mm granular material;	787	m ²	144.19	\$113,539.23
	Slab on grade; 102mm thick concrete, power trowel finish, perimeter formwork, control joints, saw cuts, reinforcing steel, poly vapour barrier, Radon layer and 150mm granular material;	234	m ²	130.94	\$30,698.21
	Perimeter rigid insulation	92	m ²	35.00	\$3,222.85
	Miscellaneous pads and bases	1	l/s	2,000.00	\$2,000.00
<u>TOTAL - A21 LOWEST FLOOR CONSTRUCTION</u>					<u>\$149,460.29</u>

Code	Description	Quantity	Unit	Rate	Extension
	<u>A2 STRUCTURE</u>				
	<u>A221 UPPER FLOOR CONSTRUCTION</u>				
	Nil				\$0.00
<u>TOTAL - A221 UPPER FLOOR CONSTRUCTION</u>					\$0.00

Code	Description	Quantity	Unit	Rate	Extension
	<u>A2 STRUCTURE</u>				
	<u>A222 STAIR CONSTRUCTION</u>				
	Nil				\$0.00
	<u>TOTAL - A222 STAIR CONSTRUCTION</u>				\$0.00

Code	Description	Quantity	Unit	Rate	Extension
<u>A2 STRUCTURE</u>					
<u>A23 ROOF CONSTRUCTION</u>					
<u>Flat Roof Structure</u>					
	T&G Plywood Sheathing	1,141	m ²	24.00	\$27,390.18
	Pre-Engineered Wood Trusses	1,141	m ²	55.00	\$62,769.17
	Framing Labour	1,141	m ²	60.00	\$68,475.46
	Blown-In Loose Fill Glass Fibre Insulation	1,141	m ²	35.00	\$39,944.02
	16mm Type 'X' Gypsum Board	1,049	m ²	36.00	\$37,764.90
	Allowance for wood beams, lintels, columns, etc.	1	l/s	5,000.00	\$5,000.00
	Miscellaneous Structural Steel Allowance	1	l/s	12,000.00	\$12,000.00
<u>TOTAL - A23 ROOF CONSTRUCTION</u>					<u>\$253,343.72</u>

Code	Description	Quantity	Unit	Rate	Extension
	<u>A3 EXTERIOR ENCLOSURE</u>				
	<u>A312 STRUCTURAL WALLS BELOW GRADE</u>				
	Included with element A111 Standard Foundations	0	m ²	-	\$0.00
	<u>TOTAL - A312 STRUCTURAL WALLS BELOW GRADE</u>				\$0.00

Code	Description	Quantity	Unit	Rate	Extension
<u>A3 EXTERIOR ENCLOSURE</u>					
<u>A321 WALLS ABOVE GRADE</u>					
<u>Exterior Wall Assembly</u>					
	Acrylic Stucco	453	m ²	185.00	\$83,754.35
	Masonry Brick Veneer	63	m ²	450.00	\$28,159.88
	Tyvek Building wrap	515	m ²	Included	\$0.00
	OSB Sheathing	515	m ²	15.00	\$7,729.56
	38mm x 140mm Load-Bearing Wood Stud Framing	515	m ²	25.00	\$12,882.59
	Framing Labour	515	m ²	50.00	\$25,765.19
	R-22 Mineral Wool Insulation & Poly Vapour Barrier	515	m ²	24.00	\$12,367.29
	16mm Type 'X' Gypsum Board	515	m ²	35.00	\$18,035.63
<u>TOTAL - A321 WALLS ABOVE GRADE</u>					\$188,694.49

Code	Description	Quantity	Unit	Rate	Extension
	<u>A3 EXTERIOR ENCLOSURE</u>				
	<u>A322 STRUCTURAL WALLS ABOVE GRADE</u>				
	Nil	0	m ²	-	\$0.00
	<u>TOTAL - A322 STRUCTURAL WALLS ABOVE GRADE</u>				\$0.00

Code	Description	Quantity	Unit	Rate	Extension
	<u>A3 EXTERIOR ENCLOSURE</u>				
	<u>A323 CURTAIN WALLS</u>				
	Nil	0	m ²	-	\$0.00
	<u>TOTAL - A323 CURTAIN WALLS</u>				\$0.00

Code	Description	Quantity	Unit	Rate	Extension
<u>A3 EXTERIOR ENCLOSURE</u>					
<u>A331 WINDOWS AND LOUVERS</u>					
	Double glazed sealed units in PVC Frames	29	m ²	325.00	\$9,478.75
<u>TOTAL - A331 WINDOWS AND LOUVERS</u>					<u>\$9,478.75</u>

Code	Description	Quantity	Unit	Rate	Extension
	<u>A3 EXTERIOR ENCLOSURE</u>				
	<u>A332 GLAZED SCREENS</u>				
	Included with Element A323				\$0.00
	<u>TOTAL - A332 GLAZED SCREENS</u>				\$0.00

Code	Description	Quantity	Unit	Rate	Extension
<u>A3 EXTERIOR ENCLOSURE</u>					
<u>A333 DOORS</u>					
	Fully glazed aluminum entrance door and frame; hardware and finish; 914mm x 2134mm				
	Single	0	No	-	\$0.00
	Double	1	Pr	5,500.00	\$5,500.00
	Hollow metal insulated core metal door and frame; hardware and finish; 914mm x 2134mm				
	Single	2	No	1,200.00	\$2,400.00
	Double	0	Pr	-	\$0.00
	Insulated Composite Overhead Doors; hardware and finish; 3050mm x 2440mm	9	No	3,800.00	\$34,200.00
<u>TOTAL - A333 DOORS</u>					<u>\$42,100.00</u>

Code	Description	Quantity	Unit	Rate	Extension
<u>A3 EXTERIOR ENCLOSURE</u>					
<u>A341 ROOFING</u>					
	2-Ply SBS Roofing Membrane; non-insulated	1,141	m ²	105.00	\$119,832.05
<u>TOTAL - A341 ROOFING</u>					<u>\$119,832.05</u>

Code	Description	Quantity	Unit	Rate	Extension
	<u>A3 EXTERIOR ENCLOSURE</u>				
	<u>A342 SKYLIGHTS</u>				
	None measured				\$0.00
	<u>TOTAL - A342 SKYLIGHTS</u>				\$0.00

Code	Description	Quantity	Unit	Rate	Extension
<u>A3 EXTERIOR ENCLOSURE</u>					
<u>A35 - PROJECTIONS</u>					
	Allowance for aluminum soffit finish	92	m ²	55.00	\$5,072.79
	Perimeter Roof Flashings	151	m	35.00	\$5,292.03
<u>TOTAL - A35 - PROJECTIONS</u>					<u>\$10,364.83</u>

Code	Description	Quantity	Unit	Rate	Extension
<u>B1 PARTITIONS & DOORS</u>					
<u>B111 FIXED PARTITIONS</u>					
<u>Rated Demising Wall</u>					
	16mm Type 'X' Gypsum Board	68	m ²	35.00	\$2,367.79
	16mm Type 'X' Gypsum Board	68	m ²	30.00	\$2,029.53
	38mm x 140mm Wood Stud Framing	68	m ²	25.00	\$1,691.28
	Framing Labour	68	m ²	40.00	\$2,706.04
	Roxul batt insulation	68	m ²	20.00	\$1,353.02
	16mm Type 'X' Gypsum Board	68	m ²	30.00	\$2,029.53
	16mm Type 'X' Gypsum Board	68	m ²	35.00	\$2,367.79
<u>Typical Interior Partitions</u>					
	16mm Type 'X' Gypsum Board	194	m ²	35.00	\$6,799.56
	38mm x 89mm Wood Stud Framing	194	m ²	16.00	\$3,108.37
	Framing Labour	194	m ²	25.00	\$4,856.83
	16mm Type 'X' Gypsum Board	194	m ²	35.00	\$6,799.56
	Glazed partitions - allowance	4	m ²	750.00	\$2,955.95
<u>TOTAL - B111 FIXED PARTITIONS</u>					\$39,065.25

Code	Description	Quantity	Unit	Rate	Extension
	<u>B1 PARTITIONS & DOORS</u>				
	<u>B112 MOVEABLE PARTITIONS</u>				
	None measured				\$0.00
	<u>TOTAL - B112 MOVEABLE PARTITIONS</u>				\$0.00

Code	Description	Quantity	Unit	Rate	Extension
	<u>B1 PARTITIONS & DOORS</u>				
	<u>B113 STRUCTURAL PARTITIONS</u>				
	None measured				\$0.00
	<u>TOTAL - B113 STRUCTURAL PARTITIONS</u>				\$0.00

Code	Description	Quantity	Unit	Rate	Extension
<u>B1 PARTITIONS & DOORS</u>					
<u>B12 DOORS</u>					
	Hollow metal insulated core door and pressed steel frame; 60 min rated; hardware				
	Single	3	No	1,750.00	\$5,250.00
	Double	0	Pr	-	\$0.00
	Solid core paint grade wood door; fully glazed; pressed steel frame; hardware				
	Single	5	No	1,400.00	\$7,000.00
	Double	0	Pr	-	\$0.00
	Fully glazed aluminum entrance door and frame; hardware and finish; 914mm x 2134mm				
	Single	0	No	-	\$0.00
	Double	1	Pr	5,500.00	\$5,500.00
	Access Control Hardware	1	l/s	Excluded	\$0.00
<u>TOTAL - B12 DOORS</u>					<u>\$17,750.00</u>

Code	Description	Quantity	Unit	Rate	Extension
<u>B2 FINISHES</u>					
<u>B21 FLOOR FINISHES</u>					
	Sealed Concrete	825	m ²	15.00	\$12,374.96
	Polished Concrete	170	m ²	60.00	\$10,215.61
	Porcelain Tile (washrooms)	11	m ²	220.00	\$2,367.26
	Rubber Base	153	m	10.00	\$1,534.74
	Ceramic Tile Base	19	m	45.00	\$840.79
<u>TOTAL - B21 FLOOR FINISHES</u>					\$27,333.36

Code	Description	Quantity	Unit	Rate	Extension
<u>B2 FINISHES</u>					
<u>B22 CEILING FINISHES</u>					
	Paint finish to exposed structure (drywall)	995	m ²	12.00	\$11,943.09
	Suspended drywall ceiling	11	m ²	120.00	\$1,291.23
	Miscellaneous Bulkheads and Features	1	l/s	1,500.00	\$1,500.00
<u>TOTAL - B22 CEILING FINISHES</u>					<u>\$14,734.32</u>

Code	Description	Quantity	Unit	Rate	Extension
<u>B2 FINISHES</u>					
<u>B23 WALL FINISHES</u>					
	Paint drywall surfaces	1,039	m ²	12.00	\$12,469.82
	Miscellaneous tiled backsplashes (Meeting Room) - allowance	1	l/s	1,500.00	\$1,500.00
<u>TOTAL - B23 WALL FINISHES</u>					<u>\$13,969.82</u>

Code	Description	Quantity	Unit	Rate	Extension
<u>B3 FITTINGS & EQUIPMENT</u>					
<u>B311 METALS</u>					
	Allowance for painted steel bollards at overhead doors	18	No	600.00	\$10,800.00
	Miscellaneous metals allowance	1,048	m ²	5.00	\$5,241.48
<u>TOTAL - B311 FITTINGS & EQUIPMENT</u>					<u>\$16,041.48</u>

Code	Description	Quantity	Unit	Rate	Extension
<u>B3 FITTINGS & EQUIPMENT</u>					
<u>B312 MILLWORK</u>					
<u>Millwork - Melamine Boxes P.Lam Counter Tops</u>					
<u>Meeting Room</u>					
	Lower Counter/Cabinets w/ Sink Insert	4.8	m	1,000.00	\$4,786.36
	Island Counter/Cabinets	2.1	m	1,800.00	\$3,712.60
	Upper Cabinets	4.1	m	800.00	\$3,271.50
<u>W/Rm</u>					
	Vanity	1.2	m	900.00	\$1,080.00
<u>W/Rm</u>					
	Vanity	1.2	m	900.00	\$1,080.00
	Allowance for miscellaneous millwork	1	l/s	1,500.00	\$1,500.00
	AWMAC Certification	1	l/s	Excluded	\$0.00
	Sub-total Millwork	\$15,430			
	Miscellaneous rough carpentry	1,048	m ²	8.00	\$8,386.36
<u>TOTAL - B312 MILLWORK</u>					\$23,816.83

Code	Description	Quantity	Unit	Rate	Extension
B3 FITTINGS & EQUIPMENT					
B313 SPECIALTIES					
	Washroom Accessories Allowance	2	No	750.00	\$1,500.00
	Tackboards, whiteboards and noticeboards - allowance	1	l/s	500.00	\$500.00
	Signage (Code Related)	1	l/s	500.00	\$500.00
	Signage - Miscellaneous - Assumed Equipment Budget	1	l/s	Excluded	\$0.00
TOTAL - B313 SPECIALTIES					\$2,500.00

Code	Description	Quantity	Unit	Rate	Extension
B3 FITTINGS & EQUIPMENT					
B32 EQUIPMENT					
	Appliances - allowance	1	l/s	6,000.00	\$6,000.00
	Lifting Equipment - Specifically Excluded	1	l/s	Excluded	\$0.00
	Furniture - assumed Furniture, Fixtures and Equipment	1	l/s	Excluded	\$0.00
	Office Desks, Chairs, Filing Cabinets and Equipment - Assumed Furniture, Fixtures and Equipment	1	l/s	Excluded	\$0.00
	TV/Monitor Brackets - assumed Furniture, Fixtures and Equipment Budget	1	l/s	Excluded	\$0.00
	Photocopier - assumed Furniture, Fixtures and Equipment	1	l/s	Excluded	\$0.00
	Projection equipment and screens - assumed Furniture, Fixtures and Equipment	1	l/s	Excluded	\$0.00
	Computer Equipment - assumed Furniture, Fixtures and Equipment	1	l/s	Excluded	\$0.00
TOTAL - B32 EQUIPMENT					\$6,000.00

Code	Description	Quantity	Unit	Rate	Extension
	<u>B3 FITTINGS & EQUIPMENT</u>				
	<u>B331 ELEVATORS</u>				
	Not Applicable				\$0.00
	<u>TOTAL - B331 ELEVATORS</u>				\$0.00

Code	Description	Quantity	Unit	Rate	Extension
	<u>B3 FITTINGS & EQUIPMENT</u>				
	<u>B332 ESCALATORS & MOVING WALKWAYS</u>				
	Not Applicable				\$0.00
	<u>TOTAL - B332 ESCALATORS & MOVING WALKWAYS</u>				\$0.00

Code	Description	Quantity	Unit	Rate	Extension
	<u>B3 FITTINGS & EQUIPMENT</u>				
	<u>B333 MATERIAL HANDLING SYSTEM</u>				
	Not Applicable				\$0.00
	<u>TOTAL - B333 MATERIAL HANDLING SYSTEM</u>				\$0.00

Code	Description	Quantity	Unit	Rate	Extension
	<u>C1 MECHANICAL</u>				
	<u>C11 PLUMBING & DRAINAGE</u>				
	Plumbing and drainage	1,048	m ²	55.00	\$57,656.25
	<u>TOTAL - C11 PLUMBING & DRAINAGE</u>				\$57,656.25

Code	Description	Quantity	Unit	Rate	Extension
	<u>C1 MECHANICAL</u>				
	<u>C12 FIRE PROTECTION</u>				
	Sprinklers heads/piping - assumed unsprinklered building	1,048	m ²	Excluded	\$0.00
	Fire Extinguishers	5	Each	250.00	\$1,250.00
	<u>TOTAL - C12 FIRE PROTECTION</u>				\$1,250.00

Code	Description	Quantity	Unit	Rate	Extension
<u>C1 MECHANICAL</u>					
<u>C13 HVAC</u>					
	HVAC and Controls - Basic; Gas Fired RTU, T-Stat Control	1,048	m ²	175.00	\$183,451.71
<u>TOTAL - C13 HVAC</u>					<u>\$183,451.71</u>

Code	Description	Quantity	Unit	Rate	Extension
	<u>C1 MECHANICAL</u>				
	<u>C14 CONTROLS</u>				
	Included with element C13				\$0.00
	<u>TOTAL - C14 CONTROLS</u>				\$0.00

Code	Description	Quantity	Unit	Rate	Extension
<u>C2 ELECTRICAL</u>					
<u>C21 SERVICE & DISTRIBUTION</u>					
	Service and distribution	1,048	m ²	35.00	\$36,690.34
	Emergency Generator and Essential Power - Specifically Excluded	1	l/s	Excluded	\$0.00
<u>TOTAL - C21 SERVICE & DISTRIBUTION</u>					\$36,690.34

Code	Description	Quantity	Unit	Rate	Extension
<u>C2 ELECTRICAL</u>					
<u>C22 LIGHTING & POWER</u>					
	Lighting - Basic	1,048	m ²	85.00	\$89,105.11
	Power - Basic	1,048	m ²	35.00	\$36,690.34
<u>TOTAL - C22 LIGHTING & POWER</u>					\$125,795.46

Code	Description	Quantity	Unit	Rate	Extension
<u>C2 ELECTRICAL</u>					
<u>C23 SYSTEMS & ANCILLARIES</u>					
	Systems - Basic; fire alarm, data and tel	1,048	m ²	50.00	\$52,414.77
	Security and CCTV - Specifically Excluded	1,048	m ²	Excluded	\$0.00
<u>TOTAL - C23 SYSTEMS & ANCILLARIES</u>					\$52,414.77

Code	Description	Quantity	Unit	Rate	Extension
<u>Z1 GENERAL REQUIREMENTS & FEES</u>					
<u>Z11 GENERAL REQUIREMENTS</u>					
	General Conditions	10.0%			\$149,263.00
<u>TOTAL - Z11 GENERAL REQUIREMENTS</u>					<u>\$149,263.00</u>

Code	Description	Quantity	Unit	Rate	Extension
<u>D1 SITE DEVELOPMENT</u>					
<u>D111 PREPARATION</u>					
	General site clearance, clearing and grubbing (assumed 60m x 80m site)	4,800	m ²	1.50	\$7,200.00
	Oversite excavation	4,800	m ³	8.00	\$38,400.00
	General site grading, levelling	4,800	m ²	2.50	\$12,000.00
	Miscellaneous site demolition	1	l/s	1,600.00	\$1,600.00
<u>TOTAL - D111 PREPARATION</u>					<u>\$59,200.00</u>

Code	Description	Quantity	Unit	Rate	Extension
<u>D1 SITE DEVELOPMENT</u>					
<u>D112 HARD SURFACES</u>					
	Asphalt paving allowance; assumed 30% of site	1,200	m ²	65.00	\$78,000.00
	Concrete aprons at overhead doors	80	m ²	130.00	\$10,400.00
	Gravel paving allowance; assumed 60% of site	2,400	m ²	35.00	\$84,000.00
	Miscellaneous pads and bases	1	l/s	5,000.00	\$5,000.00
<u>Off-site Costs</u>					
	Off-site road and sidewalk improvements - Specifically Excluded	1	l/s	Excluded	\$0.00
<u>TOTAL - D112 HARD SURFACES</u>					\$177,400.00

Code	Description	Quantity	Unit	Rate	Extension
<u>D1 SITE DEVELOPMENT</u>					
<u>D113 IMPROVEMENTS</u>					
	Site signage - allowance	1	l/s	3,000.00	\$3,000.00
	Fenced compound - allowance	1	l/s	10,000.00	\$10,000.00
	Miscellaneous bollards - allowance	1	l/s	2,400.00	\$2,400.00
<u>TOTAL - D113 IMPROVEMENTS</u>					\$15,400.00

Code	Description	Quantity	Unit	Rate	Extension
<u>D1 SITE DEVELOPMENT</u>					
<u>D114 LANDSCAPING</u>					
	Landscaping - assumed minimal requirements	1	l/s	15,000.00	\$15,000.00
<u>TOTAL - D114 LANDSCAPING</u>					<u>\$15,000.00</u>

Code	Description	Quantity	Unit	Rate	Extension
	<u>D1 SITE DEVELOPMENT</u>				
	<u>D12 MECHANICAL SITE SERVICES</u>				
	Domestic water connection	1	l/s	10,000.00	\$10,000.00
	Sanitary water connection	1	l/s	12,000.00	\$12,000.00
	Storm sewer	1	l/s	60,000.00	\$60,000.00
	Gas - By Utility	1	l/s	-	\$0.00
	<u>Off-site Costs</u>				
	Off-Site Servicing - <i>Specifically Excluded</i>	1	l/s	Excluded	\$0.00
	<u>TOTAL - D12 MECHANICAL SITE SERVICES</u>				\$82,000.00

Code	Description	Quantity	Unit	Rate	Extension
<u>D1 SITE DEVELOPMENT</u>					
<u>D13 ELECTRICAL SITE SERVICES</u>					
	Electrical site allowance	1	l/s	25,000.00	\$25,000.00
	Site lighting - assumed wall packs from building	1	l/s	Excluded	\$0.00
	Cable/Tel	1	l/s	5,000.00	\$5,000.00
	Emergency Generator and Essential Power - Specifically Excluded	1	l/s	Excluded	\$0.00
<u>Off-site Costs</u>					
	Off-Site Servicing - Specifically Excluded	1	l/s	Excluded	\$0.00
<u>TOTAL - D13 ELECTRICAL SITE SERVICES</u>					\$30,000.00

Code	Description	Quantity	Unit	Rate	Extension
<u>Z1 GENERAL REQUIREMENTS & FEES</u>					
<u>Z11 GENERAL REQUIREMENTS</u>					
	General Conditions	10.0%			\$37,900.00
<u>TOTAL - Z11 GENERAL REQUIREMENTS</u>					<u>\$37,900.00</u>

Code	Description	Quantity	Unit	Rate	Extension
<u>D2 ANCILLARY WORK</u>					
<u>D211 DEMOLITION</u>					
	Specifically Excluded	1	l/s	Excluded	\$0.00
<u>TOTAL - D211 DEMOLITION</u>					\$0.00

Code	Description	Quantity	Unit	Rate	Extension
	<u>D2 ANCILLARY WORK</u>				
	<u>D212 HAZARDOUS MATERIALS</u>				
	Removal of hazardous materials - Specifically Excluded	1	l/s	Excluded	\$0.00
	<u>TOTAL - D212 HAZARDOUS MATERIALS</u>				\$0.00

Code	Description	Quantity	Unit	Rate	Extension
	<u>D2 ANCILLARY WORK</u>				
	<u>D22 ALTERATIONS</u>				
	Not applicable				\$0.00
	<u>TOTAL - D22 ALTERATIONS</u>				\$0.00

Code	Description	Quantity	Unit	Rate	Extension
<u>Z1 GENERAL REQUIREMENTS & FEES</u>					
<u>Z11 GENERAL REQUIREMENTS</u>					
	General Conditions	10.0%			\$0.00
<u>TOTAL - Z11 GENERAL REQUIREMENTS</u>					<u>\$0.00</u>