

Pincushion Mountain Proposed Parking Lot

Entrance/Driveway:

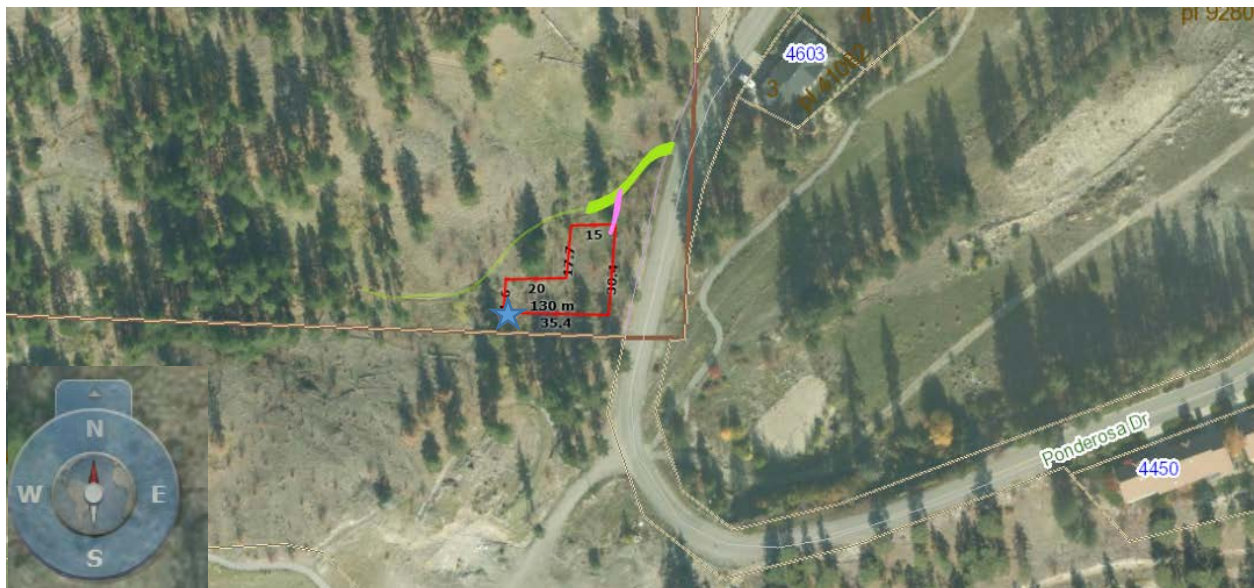
- Frontage is crownland located SW of 4603 Ponderosa Drive
- Follows existing dirt vehicle trails
- Entrance and driveways widened to 5m
- Culvert added at roadway
- Removal of 1 tree 7m high and 20cm wide (at entrance/roadway)

Parking Lot:

- “L” shape design – maximum length is 30m and maximum width is 35m – Total area 655m
- Grade to natural slope
- Onsite drainage added
- Recycled asphalt base
- All large/mature trees will remain
- Removal of 1 tree – 8m high and 20cm wide

Amenities *(to be provided and maintained by the District of Peachland)*

- Portable washroom
- Garbage
- Picnic area (2 picnic tables)
- Wayfinding signage (**installation of provincial signage as appropriate*)
- Winter maintenance of parking lot



Legend:

- Red - New parking lot (approx. 655m)
- Bold Green - Existing Trail widened to 5m for driveway access (approx. 30m)
- Light Green - Existing trail (not extended – for information only)
- Bold Pink – Existing trail widened to 5m for driveway access (approx. 10m)
- Blue Star – Picnic/View Point/washrooms

Proposed Entrance off Ponderosa Drive (tree to the right to be removed)



Proposed access (Bold Green) to the left of the tree



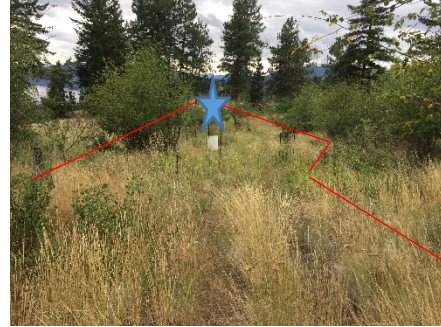
Intersection of Bold Green and Bold Pink Access



Proposed access (Bold Pink) left of the tree



Proposed parking lot looking down (from the intersection of Pink and Green Access) and view point near the property line



View point over looks the future Ponderosa Golf Course and show beautiful views of Okanagan Lake and mountains



Proposed lower parking lot looking up the proposed access (right of the tree)

