


NORTH WESTSIDE GOVERNANCE & SERVICES STUDY
COMMITTEE MEETING

May 19, 2022

5/19/22

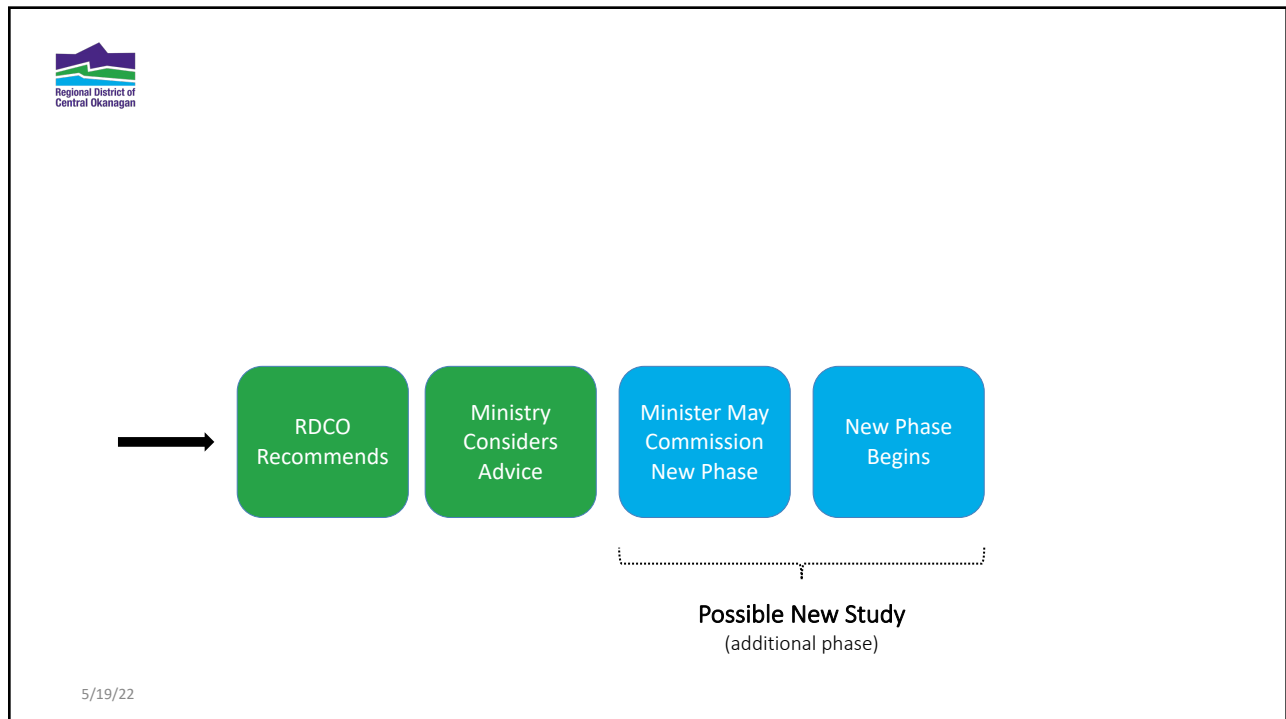
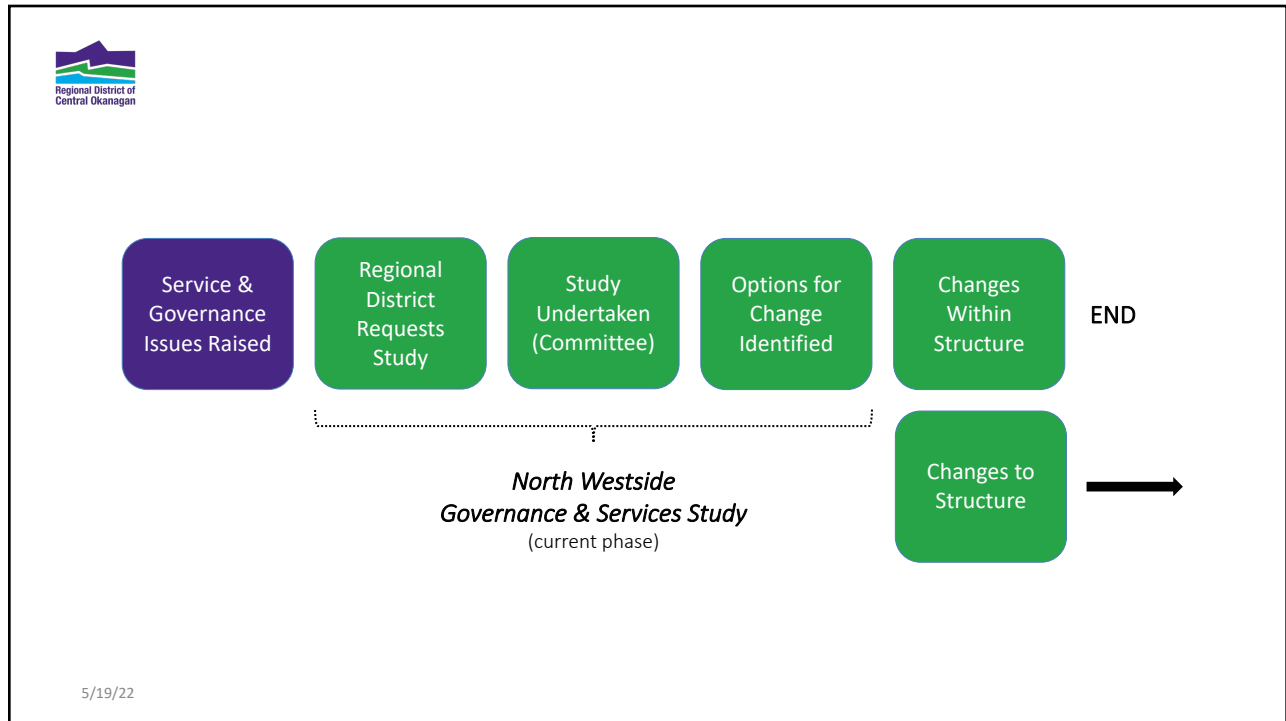


THE BIG PICTURE

- ▶ Governance & Services Study is first phase of what *could* be a broader process



5/19/22

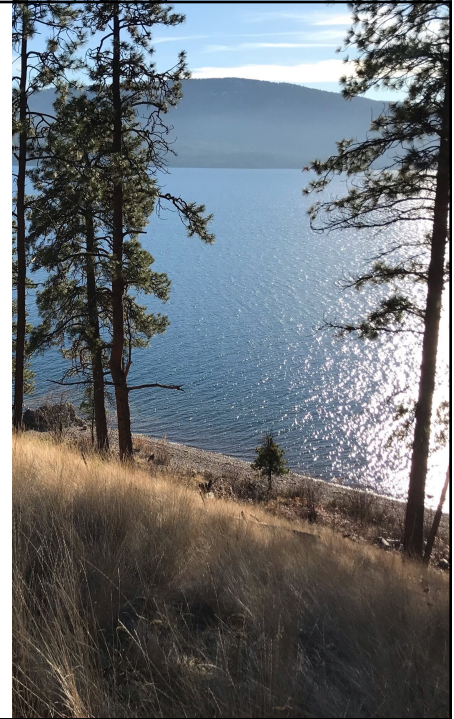




THE STUDY

- ▶ Purpose of Study is threefold:
 - ✓ document and assess current governance and services ("what is")
 - ✓ Engage to understand concerns and interests
 - ✓ Identify changes to consider

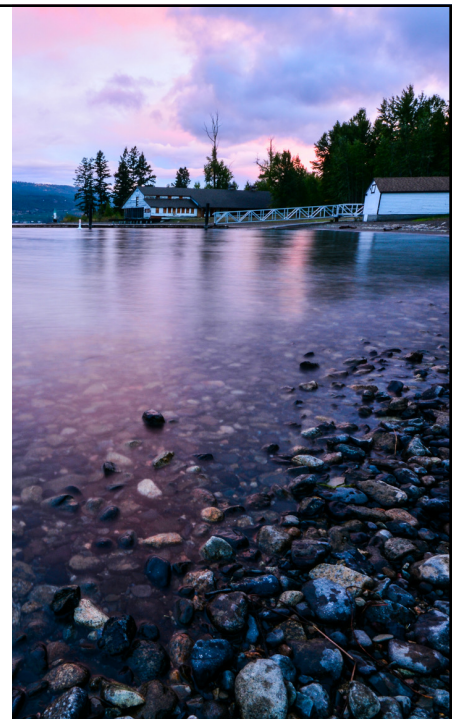
5/19/22



THE MEETING

- ▶ Tonight's meeting will focus on the first of the three purposes – "what is"
- ▶ Prepare, as well, for community engagement

5/19/22





DRAFT INTERIM REPORT

- ▶ Regional Districts Overview
 - ✓ Local government in place for North Westside
 - ✓ Important to understand opportunities and limitations

5/19/22



DRAFT INTERIM REPORT

- ▶ North Westside Community Overview
 - ✓ What are the attributes of the community
 - ✓ What are implications for governance and service provision

5/19/22





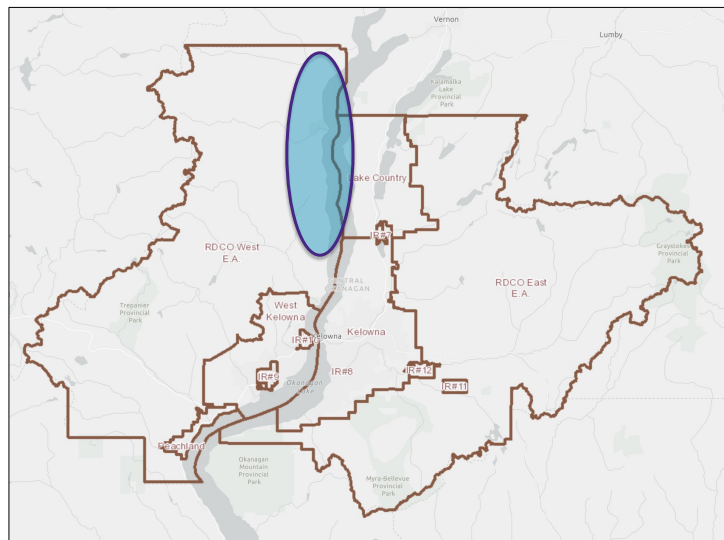
DRAFT INTERIM REPORT

- ▶ Local Services Provided by RDCO and Others
 - ✓ How does service provision work
 - ✓ What are the surprises
 - ✓ What are the big takeaways

5/19/22



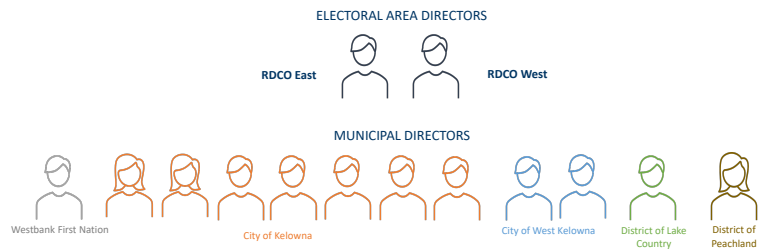
- ▶ Federations;
service providers



5/19/22



► Governing Body



5/19/22



► Voting Rules

Jurisdiction	2016 Census		
	Pop	Directors	Strength
Central OK West	11,009	1	3
Central OK East	3,824	1	1
City of Kelowna	129,044	7	33
City of West Kelowna	32,655	2	9
District of Lake Country	12,922	1	4
District of Peachland	5,428	1	2
Total	194,882	13	52

5/19/22



Voting Rules

Type of RDCO Service	Number	Who Votes in Stakeholder Votes (administration & operation)
Region-wide services, provided to all jurisdictions	15	Entire Board of Directors
Sub-regional services provide to subset of jurisdictions	13	Directors from participating jurisdictions only*
Local Services provided only to Central Okanagan West Electoral Area	3	Entire Board of Directors
Local Services provided only to North Westside	5	Entire Board of Directors
Total RDCO Services	36	

* The exception is votes on bylaws that exercise a regulatory authority in relation to regulatory services. These votes involve the entire Board.

5/19/22



Finance

SAMPLE TAX NOTICE – NORTH WESTSIDE



1. RDCO services for North Westside (2022)

Administration	Property Tax per \$15,000 home	Total property tax assessed on North Westside
Central Okanagan Board Services A/B	\$8.25	\$287
Board	\$5.31	\$8,608
Electoral Area Administration	\$3.47	\$776
Central Okanagan Board Administration	\$9.33	\$15,404
Regional Services Fund	\$8.28	\$322
University of Texas	\$14.42	N/A
Planning & Development		
Electoral Area Planning	\$22.93	\$128,224
Regional Planning	\$4.82	\$5,861
Building Inspection	\$19.42	\$146,491
Transportation, General Management	\$1.94	\$4,367
Water Infrastructure		
Board	\$1.36	\$1,089
Utility Provision	\$2.44	\$4,570
Water Control	\$8.19	\$367
Water Control	\$1.88	\$1,491
Water Control	\$8.90	\$15,177
Solid Waste		
Solid Waste Fund Fee	\$41.89	\$28,707
Economic Development		
Economic Development Commission	\$9.21	\$15,278
Public Services		
Emergency Services	\$67.63	\$114,424
Westside Community Parks	\$91.54	\$148,034
Okanagan Regional Library	\$18.49	\$91,538
Environmental Services		
Okanagan Forest Water Board	\$18.36	\$29,412
Atmosphere	\$1.78	\$2,893
Health Inspection Services	\$8.90	\$8,107
Emergency Services		
Regional Rescue	\$21.95	\$136,875
Police Services	\$2.73	\$4,478
Fire Department Call	\$1.29	\$1,648
Civilian Response	\$2.41	\$3,958
Civilian Protection	\$1.75	\$6,714
Electoral Area Fire	\$19.26	\$31,782
North Westside Fire Protection	\$415.22	\$685,176
Subtotal for one-vote taxes	\$938.38	\$1,444,485

2. Local Area specific services (2022)

Edging Community Hall	\$15.54	\$25,388
Edging Fire Hall paid tax	\$18.84	\$9,412
Edging Water Fund Fee	\$802.72	\$227,141
Edging Water User Fee	\$279.08	N/A
Edging North West Water Fee	\$201.08	N/A
Edging South West Water Fee	\$227.08	N/A
Subtotal for area-specific charges	N/A	

* These services reflect basic user fee + asset removal fee. Does not include consumption fees.

3. Provincial services for North Westside (2021*)

Police Tax	\$42.10	\$68,453
Road Tax (roads, subdivisions)	\$285.75	\$471,475
School Tax	\$916.18	\$1,511,461
Subtotal for provincial services	\$1,244.03	\$3,050,389

*2022 provincial tax rates not yet released

4. Other agencies for North Westside (2021*)

Central Okanagan Hospital District	\$146.34	\$274,447
Metropolitan Transit Authority	\$8.15	\$2,719
BC Transportation Services	\$12.10	\$20,554
Subtotal for agency taxes	\$196.59	\$307,720

*2022 provincial tax rates not yet released

1. Tax rate is applied only to improvements. It is assumed the assessed value of the \$625,000 home is split evenly (50/50) between land and improvement value.
2. Tax rate is applied only to improvements. It is assumed the assessed value of the \$625,000 home is split evenly (50/50) between land and improvement value.

5/19/22

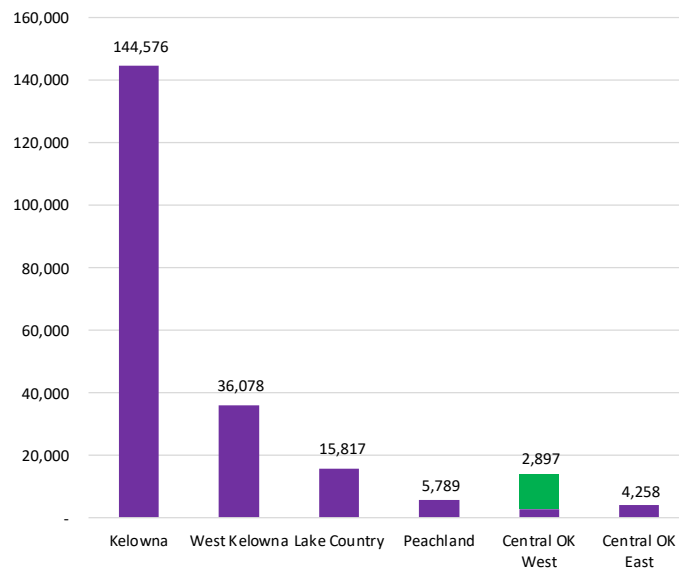


DRAFT INTERIM REPORT

► North Westside Community

✓ Population

5/19/22



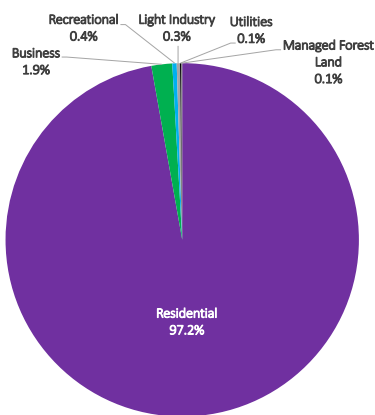
5/19/22



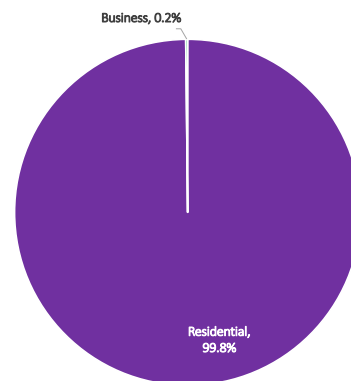
DRAFT INTERIM REPORT

- ▶ North Westside Community
 - ✓ Population
 - ✓ Housing
 - ✓ Assessment Base

5/19/22



Central Okanagan West EA



North Westside Community

5/19/22



DRAFT INTERIM REPORT

- Local government services

5/19/22

[illegible]

1. RDCO services for North Westside (2022)

Administration	Property Tax per \$635,000 home	Total property tax collected in North Westside
Central Okanagan West Grants in Aid	\$0.25	\$397
Board	\$5.21	\$8,658
Electoral Area Administration	\$0.47	\$778
Central Okanagan West Administration	\$9.33	\$15,404
Regional Grants in Aid	\$0.20	\$323
Surveyor of Taxes	\$46.42	n/a
Planning & Development		
Electoral Area Planning	\$72.93	\$120,324
Regional Planning	\$4.83	\$7,961
Building Inspection	\$10.92	\$16,681
Transportation Demand Management	\$2.54	\$4,247

5/19/22



Bylaw Enforcement		
Noise ¹	\$1.56	\$3,083
Untidy Premises ¹	\$2.44	\$4,878
Insect Control	\$0.19	\$367
Weed Control	\$0.83	\$1,415
Dog Control	\$8.00	\$13,177
Solid Waste		
Solid Waste Parcel Tax	\$43.00	\$59,727
Economic Development		
Economic Development Commission	\$9.27	\$15,273
Parks & Recreation		
Regional Parks	\$67.63	\$111,429
Westside Community Parks	\$89.54	\$148,054
Okanagan Regional Library	\$58.99	\$97,558

5/19/22



Environmental Services		
Okanagan Basin Water Board	\$18.54	\$29,472
Air quality	\$1.78	\$2,893
Sterile Insect Release ²	\$6.92	\$9,151
Emergency Services		
Regional Rescue	\$21.95	\$36,075
Victim Services	\$2.73	\$4,478
911 Emergency Call	\$3.37	\$5,558
Crime Stoppers	\$2.41	\$3,950
Crime Prevention	\$3.75	\$6,216
Electoral Area Fire	\$19.26	\$31,782
North Westside Fire Protection	\$415.32	\$685,176
Subtotal for area-wide taxes	\$930.58	\$1,444,485

5/19/22



2. Local Area specific services (2022)

Killiney Community Hall	\$15.56	\$25,385
Ridgeview Fire Hall parcel tax	\$18.84	\$9,422
Fintry Water Parel Tax	\$850.72	\$227,141
* Fintry Water User Fee	\$273.00	n/a
* Killiney Beach Waer User Fee	\$311.00	n/a
* Westshore Estates Water User Fee	\$337.00	n/a
Subtotal for area-specific charges	N/A	

* these services reflect basic user fee + asset renewal fee. Does not include consumption fees

5/19/22



3. Provincial services for North Westside (2021*)

Police Tax	\$42.10	\$69,455
Rural Tax (roads, subdivision)	\$285.75	\$471,415
School Tax	\$916.18	\$1,511,461
Subtotal for provincial services	\$1,244.03	\$2,052,331

* 2022 provincial tax rates not yet released

4. Other agencies for North Westside (2021*)

Central Okanagan Hospital District	\$166.36	\$274,447
Municipal Finance Authority	\$0.13	\$210
BC Assessment Authority	\$26.10	\$43,056
Subtotal for agency taxes	\$192.59	\$317,713

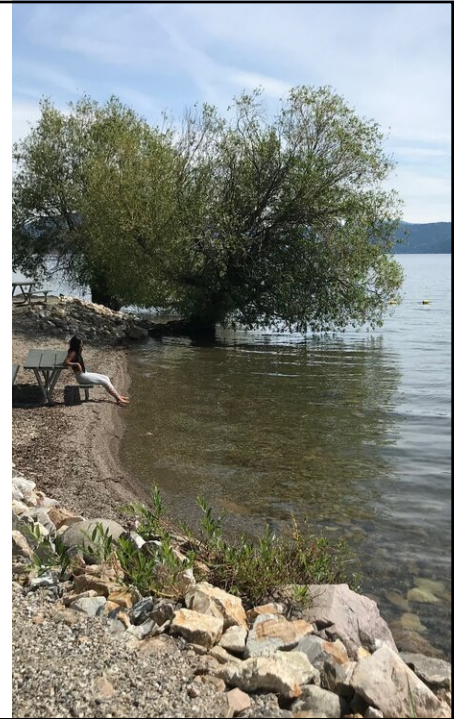
5/19/22



COMMUNITY ENGAGEMENT

- ▶ Overview Booklet
 - ✓ available online
 - ✓ hard copies at Open Houses
 - ✓ other distribution if possible
- ▶ Survey at Open Houses and online
- ▶ All materials on website, with FAQ function

5/19/22



COMMUNITY ENGAGEMENT

- ▶ Expectations of Committee Members

5/19/22

